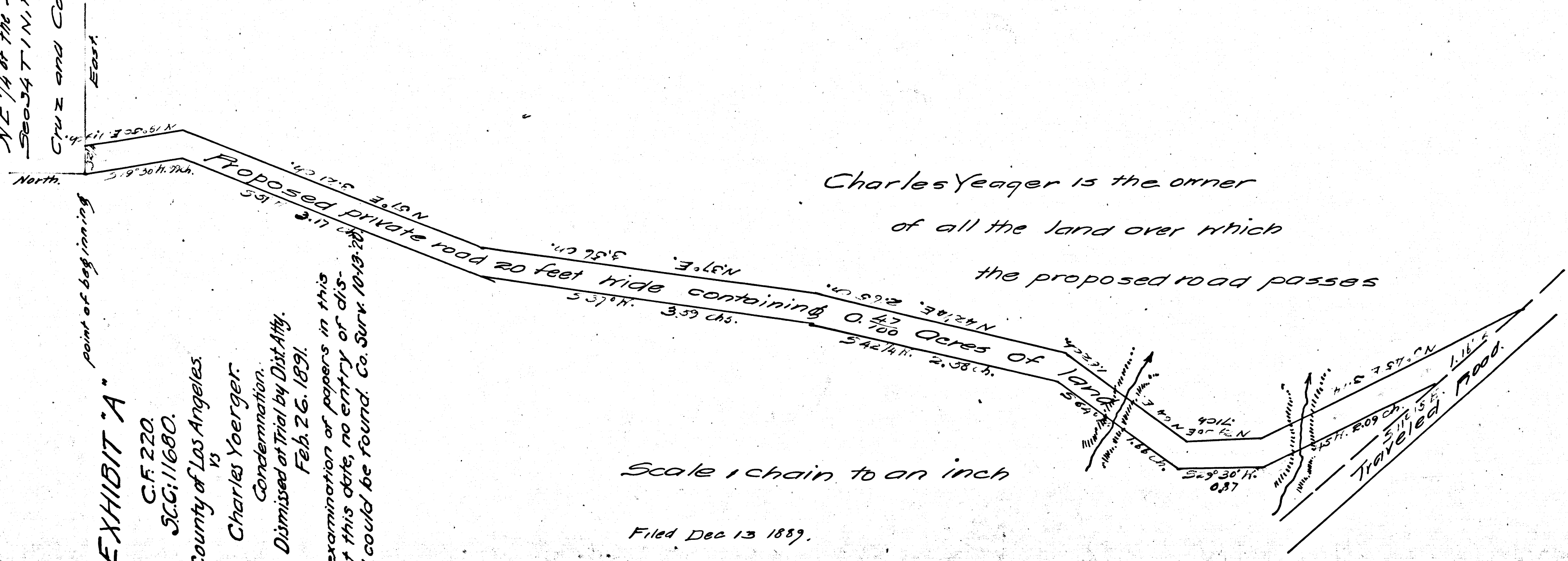


NE 1/4 of the S.E. 1/4 of  
Sec 34 T1N, R14W, S15N.  
Cruz and Corneal land.



Charles Yeager is the owner  
of all the land over which  
the proposed road passes

EXHIBIT "A"

C.F. 220.  
S.C.G. 11680.  
County of Los Angeles  
vs  
Charles Yeager.  
Condemnation.  
Dismissed at Trial by Dist. Atty.  
Feb. 26, 1891.

From examination of papers in this  
case at this date, no entry of dis-  
missal could be found. Co. Surv. 1013-20

Scale 1 chain to an inch

Filed Dec 13 1889.

C.F. 220

