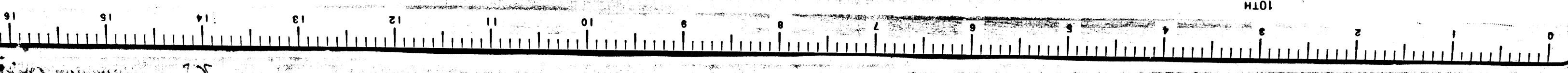


VEMCO PASADENA, CAL.

LS 6

H101

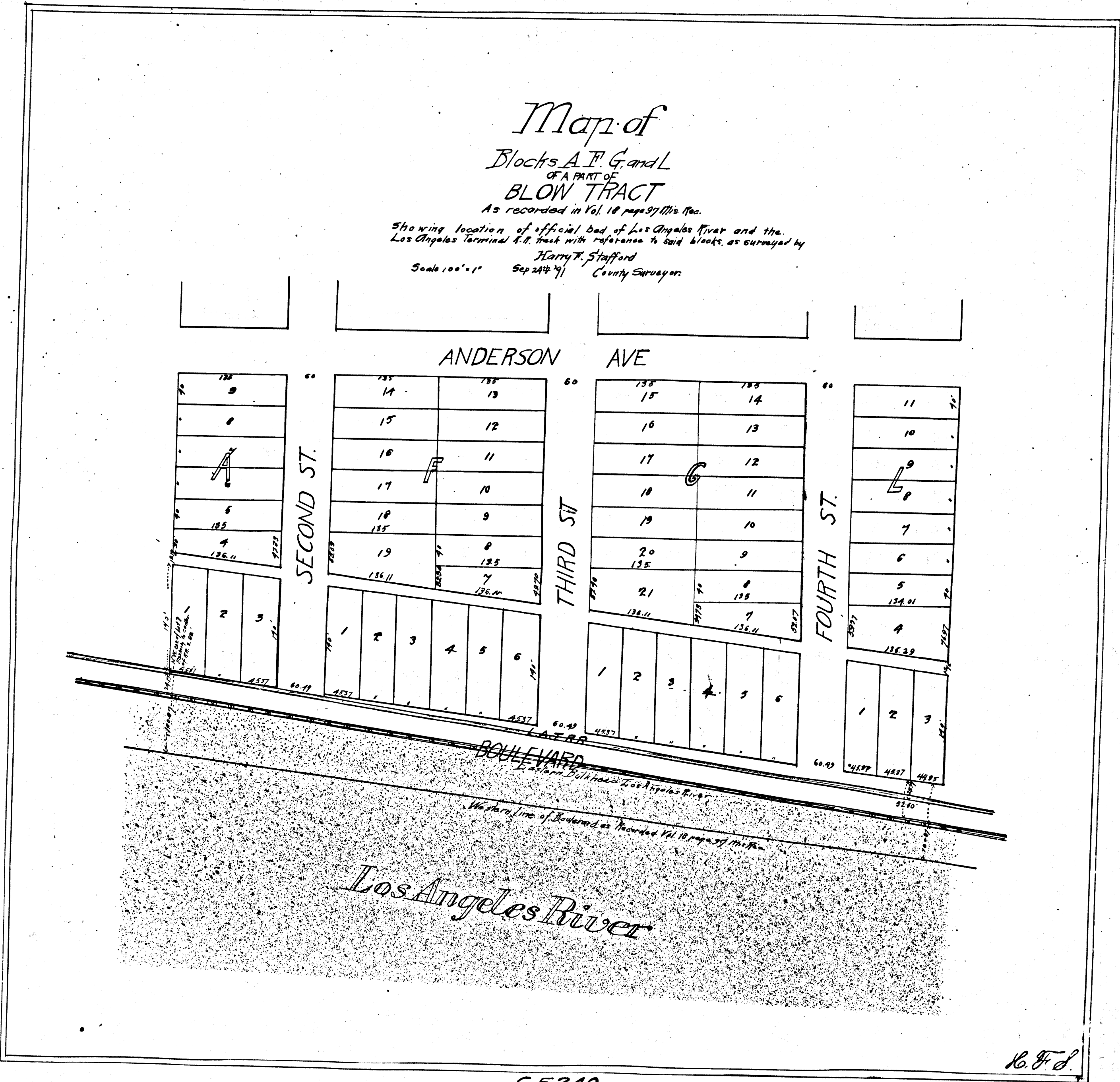


Map of Blocks A, F, G, and L OF A PART OF BLOW TRACT

As recorded in Vol. 18 page 97 of the Rec.

Showing location of official bed of Los Angeles River and the
Los Angeles Terminal R.R. track with reference to said blocks, as surveyed by

Harry F. Stafford
Scale 100' = 1" Sep 24th '91 County Surveyor.

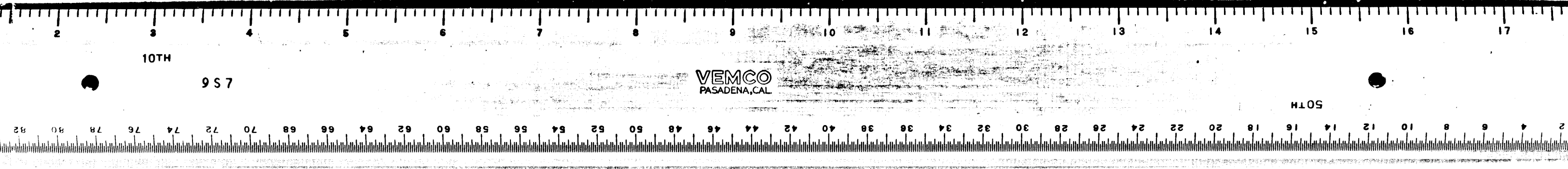


C.F. 240

C.F. 240.
S.C.C. 14433.
James Quill,
vs
A. Jacoby.
Rescission.
F. Judgt. For Deft.
• Dec. 3, 1892.
• Book 38-306
Jdgt does it

H. F. S.

FILED
AUG 24 1892



VEMCO PASADENA, CAL.

H105