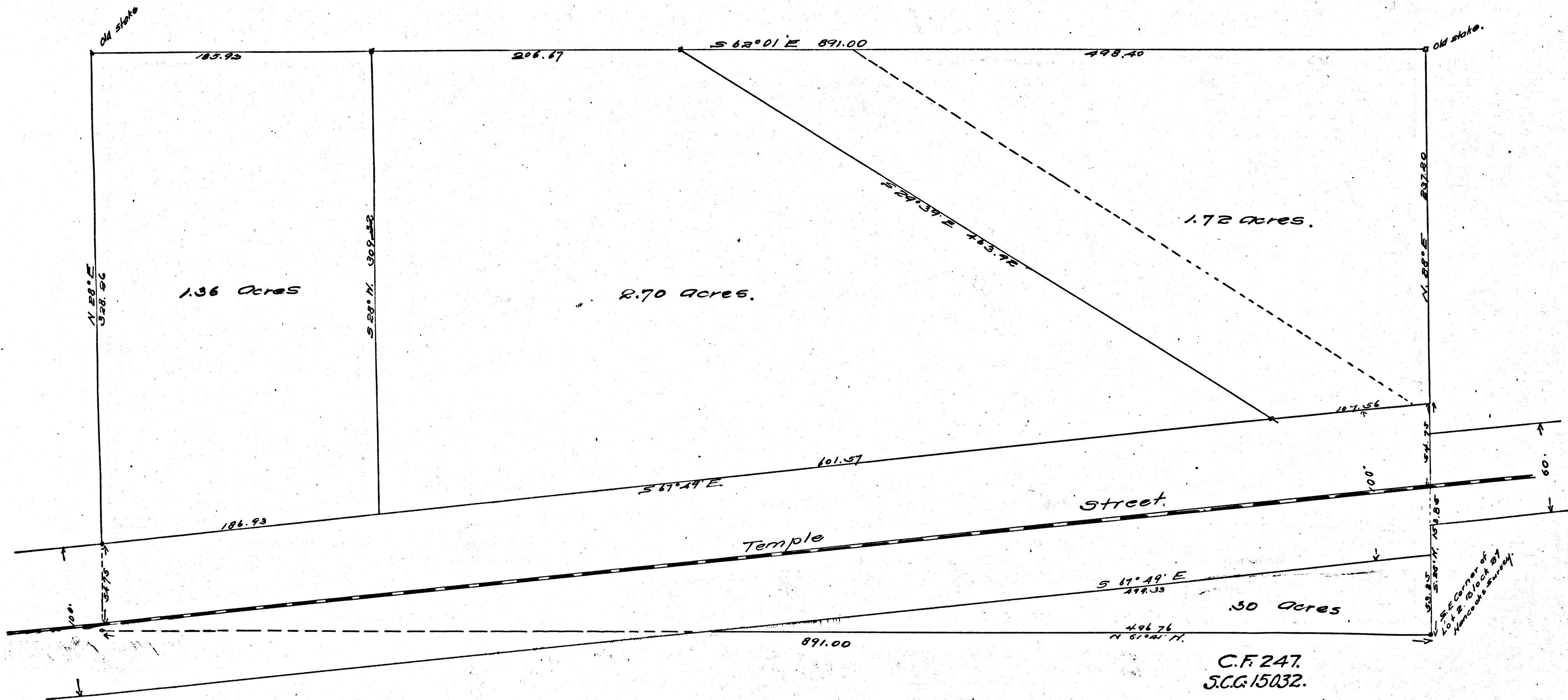


# MAP of the CARY TRACT

in  
Lot 2-Block 27-Hancock's Survey  
City of Los Angeles Cal  
Located by  
Haight & Nicholson  
April 1891  
Scale 60 ft to 1 inch



Vacation por. Temple St. to 80 ft in width Ord 8561

C.F. 247.  
S.C.G. 15032.  
M.F. Cary et al.  
vs.  
W<sup>m</sup> H. Cary.  
Partition.  
Int. Jdgt. Apr. 22-1891.  
No. Final Jdgt.  
Last action = Oct. 14-1893.

C.F. 247 -

