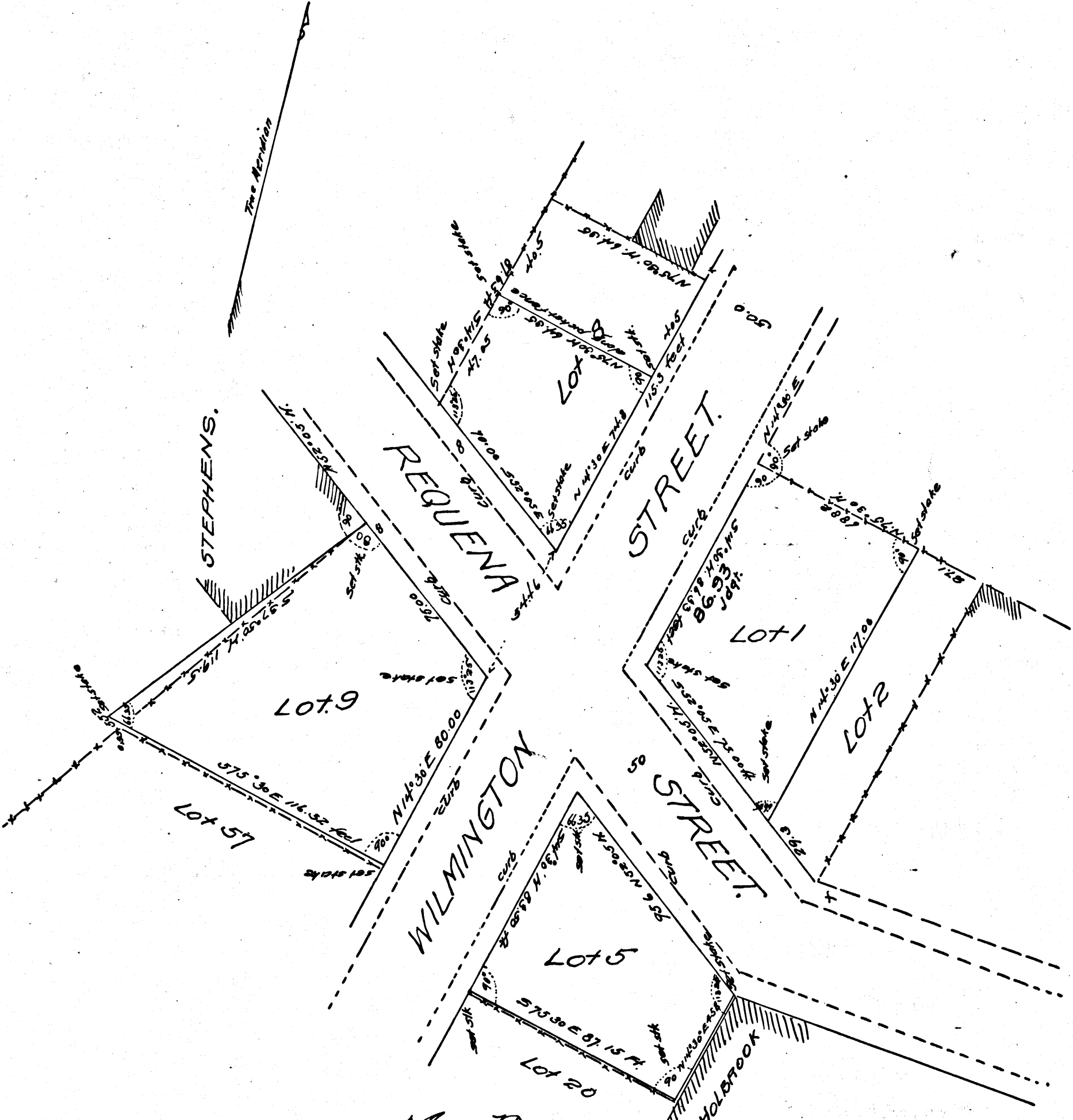


THERE IS NO SATISFACTORY SUBSTITUTE FOR AN ELECTRIC CLEANER



Map
and Survey of Lots 1, 5, 9 and (part of) Lot 8 out by Amended Decree, See Judt. Book 29-6

REQUENA TRACT.

Los Angeles City California

Surveyed Mar 8th 1887 by Hansen and Sobano

TRUE COURSES VARIATION 14° 30' E
Scale of 1 in to 50 ft

Filed June 22, 1891

C.F. 248.

S.C.C. 15370.

Emeline Childs et al.

vs

J. G. Downey.

Partition.

Final Judgt.

June 25-1891 = Judgt. 29-16 (description)

" 29-1891. " 29-6 (changes Title)

Judgt. - by this map as noted in Brown.

C.F. 248