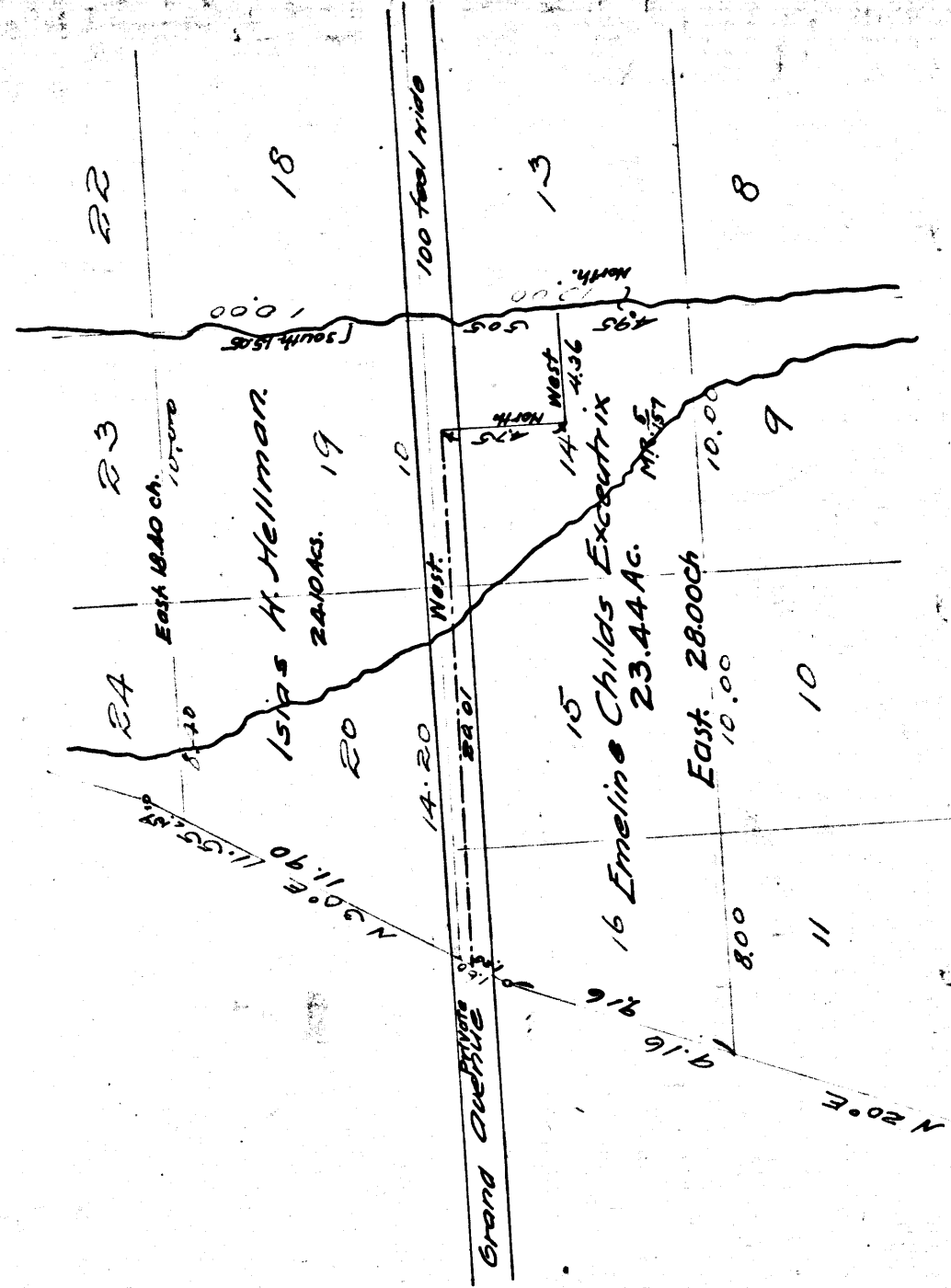


Map No. 2

Partition Map of lots 14, 15, 16, 19 and 20 of the
of the Rancho San Rafael,
Childs Tract, partitioned in case No 15,698 in the Superior
Court of Los Angeles County Cal.



Filed Dec 7, 1891.

C.F. 255.
S.C. 15693.

Emeline Childs,

vs.

Isabel W. Hellman,

Partition.

Final Judgment of Partition.

- Dec. 7, 1891.

- Book 33-193.

Drawn notes are from Judge.

Grand Jurors is Private.

C.F. 255