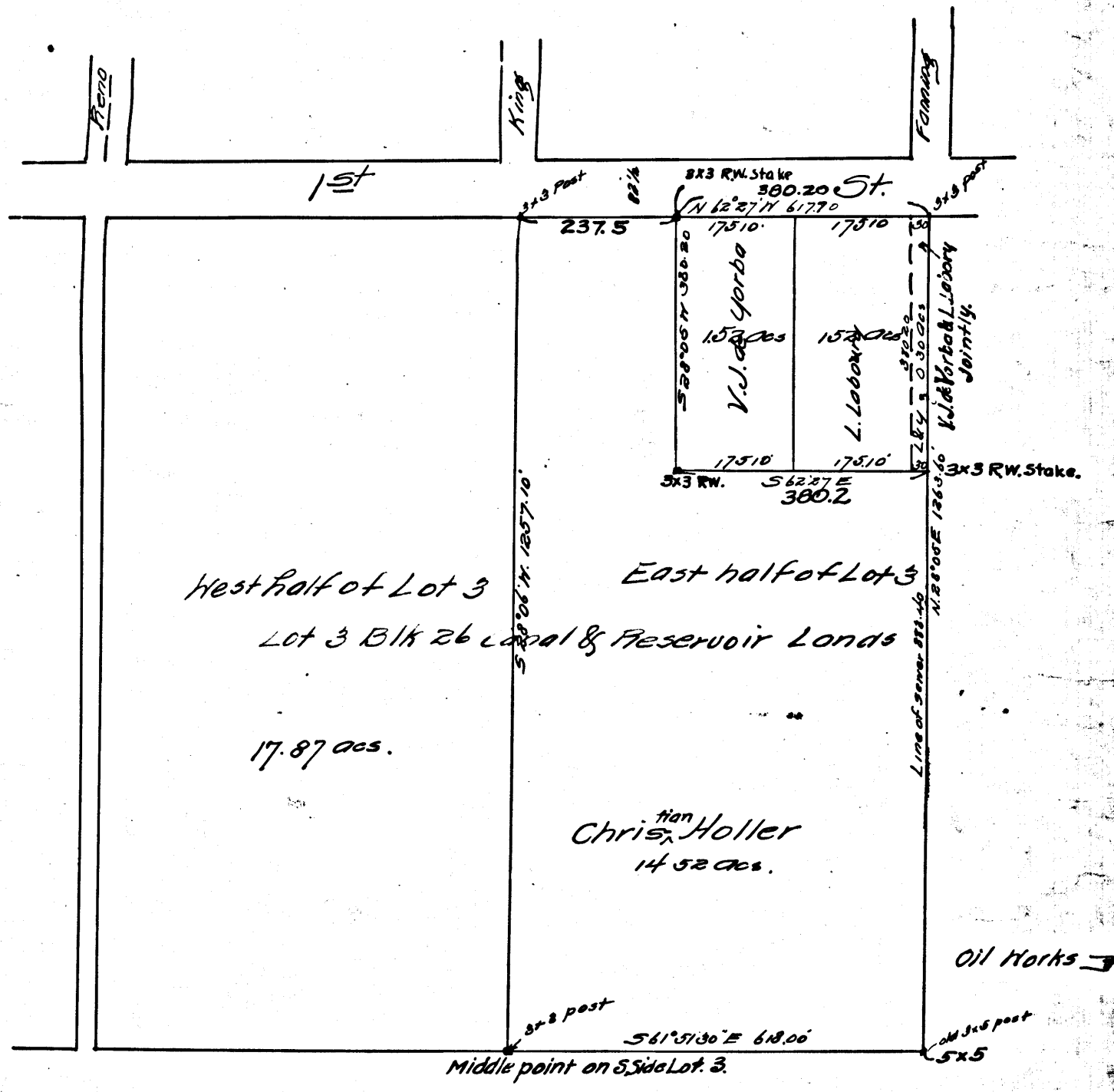


THERE IS NO SATISFACTORY SUBSTITUTE FOR AN ELECTRIC CLEANER - BUY A "KENMCIRE"



Plat
 Showing the partition of the East half of Lot 3
 Block 26, C & A Lands, City of Los Angeles, Cal.
 as made under the interlocutory decree filed in the
 case of Vic. J. de Yorba, et al., Plffs. vs. J. H.C. Miller
 et al. Defts. in the Superior Court of California, in
 and for the County of Los Angeles, by John M. Bald.
 Win. Referee.

Scale 200ft = 1 inch.
 True Courses.
 filed Mar. 24th 1893.
 C.F. 258.
 S.C.C.: 16026.
 Victoria J. de Yorba, et al.
 vs.
 John W.C. Miller et al.
 Partition.
 Final Adjt. of Partition.
 " " Mar. 14-1893, Book 43-36.
 Amended Adjt. Mar. 14-1893, " 44-7
 To E. 1/2 Lot 3, Blk 26, net to W 1/2.

C.F. 258

509
 1005

VEMCO
 REGIONAL

VEMCO