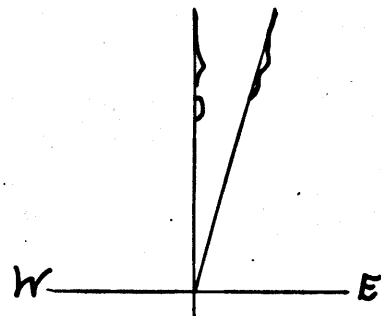


Judgment in favor of County: Rancho Simi



Miguel Leonis

For survey notes, see County Surveyor's Record of Surveys Book 4, page 193.

MAP
OF THE
CHESEBRO PRIVATE ROAD
in the Rancho Las Virgenes
Los Angeles County Cal
width of Road 20 feet 10 feet each side of centre line
Surveyed November 17th 1890
by Harry F. Stafford
County Surveyor
Scale 10 chains = 1 inch.

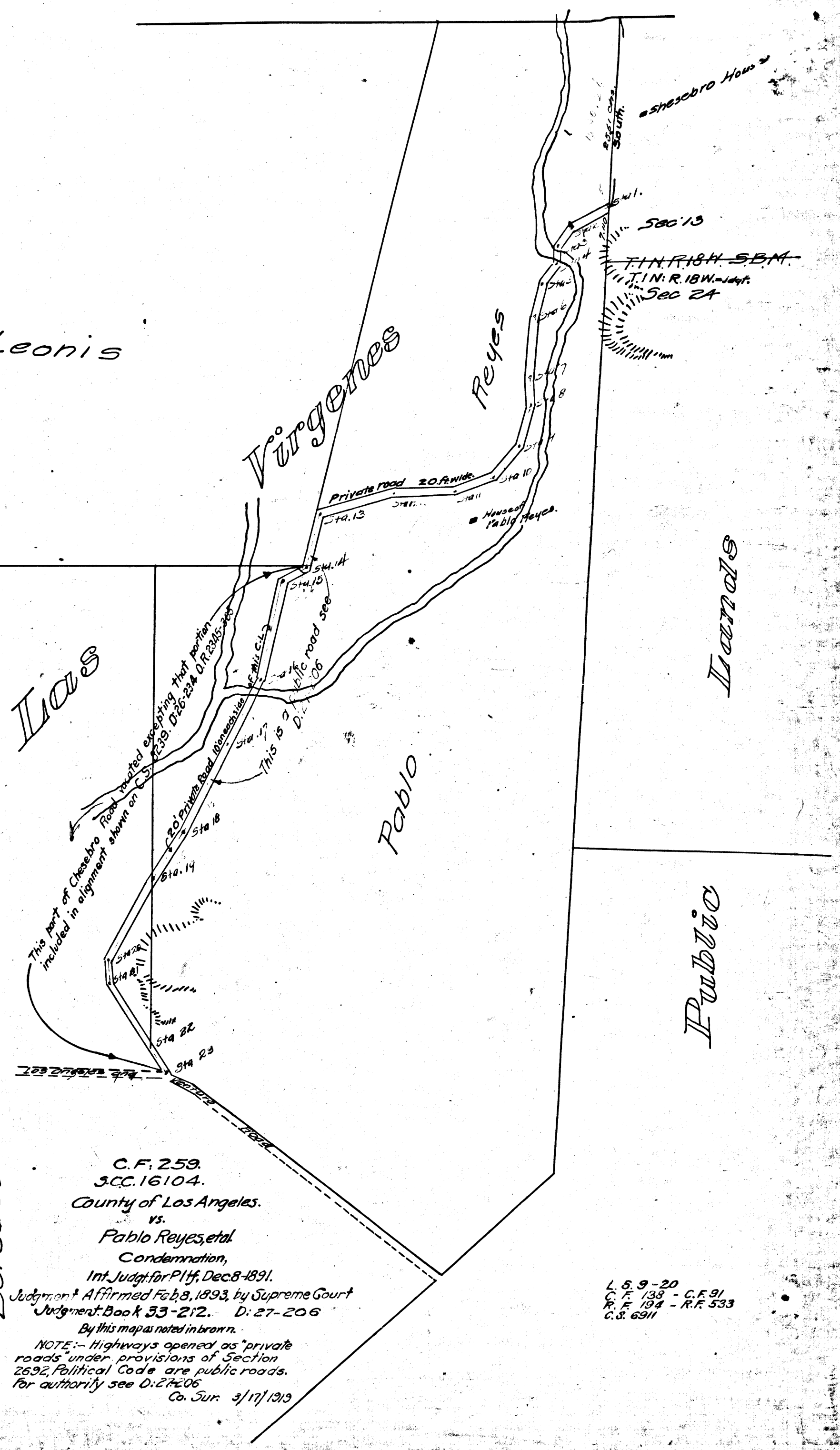
Sht. 90

Sta	Course	Dist
1	E. 61°30' H.	4.00
2	E. 34°45' H.	3.20
3	S. 00°30' H.	2.10
4	S. 35°46' H.	3.15 = 5.35°45' H. 3.15 Ch. = 4.44
5	S. 14°20' H.	4.60
6	S. 5°00' H.	8.25
7	S. 1°30' E.	3.37
8	S. 14°10' H.	6.10
9	S. 4°30' H.	5.45
10	S. 49°45' H.	5.60
11	S. 55°00' H.	8.00
12	S. 72° H.	10.45
13	S. 13°45' H.	7.65
14	S. 11°00' H.	3.37
15	S. 12°10' H.	14.00
16	S. 24°45' H.	10.00
17	S. 20°30' H.	14.00
18	S. 32°25' H.	7.50 = 5.32°23' H. 7.50 = 4.44
19	S. 07°45' H.	14.00
20	S. 1°30' E.	3.00
21	S. 32°15' E.	10.92
22	E. 34°00' E.	8.93

Filed Dec. 9, 1891

C.F. 259

Bersabe de Buddes



C.F. 259
3CC. 16104.
County of Los Angeles.
vs.
Pablo Reyes, et al
Condemnation,
Int. Judgt. for Pltff, Dec. 8-1891.
Judgment Affirmed Feb. 8, 1893, by Supreme Court
Judgment: Book 53-212. D: 27-206
By this map as noted in return.
NOTE: - Highways opened as "private roads" under provisions of Section 2692, Political Code are public roads. For authority see D: 27-206
Co. Sur. 3/17/1919

L. 59-20
C. F. 138 - C. F. 91
P. F. 194 - R. F. 533
C. S. 6911