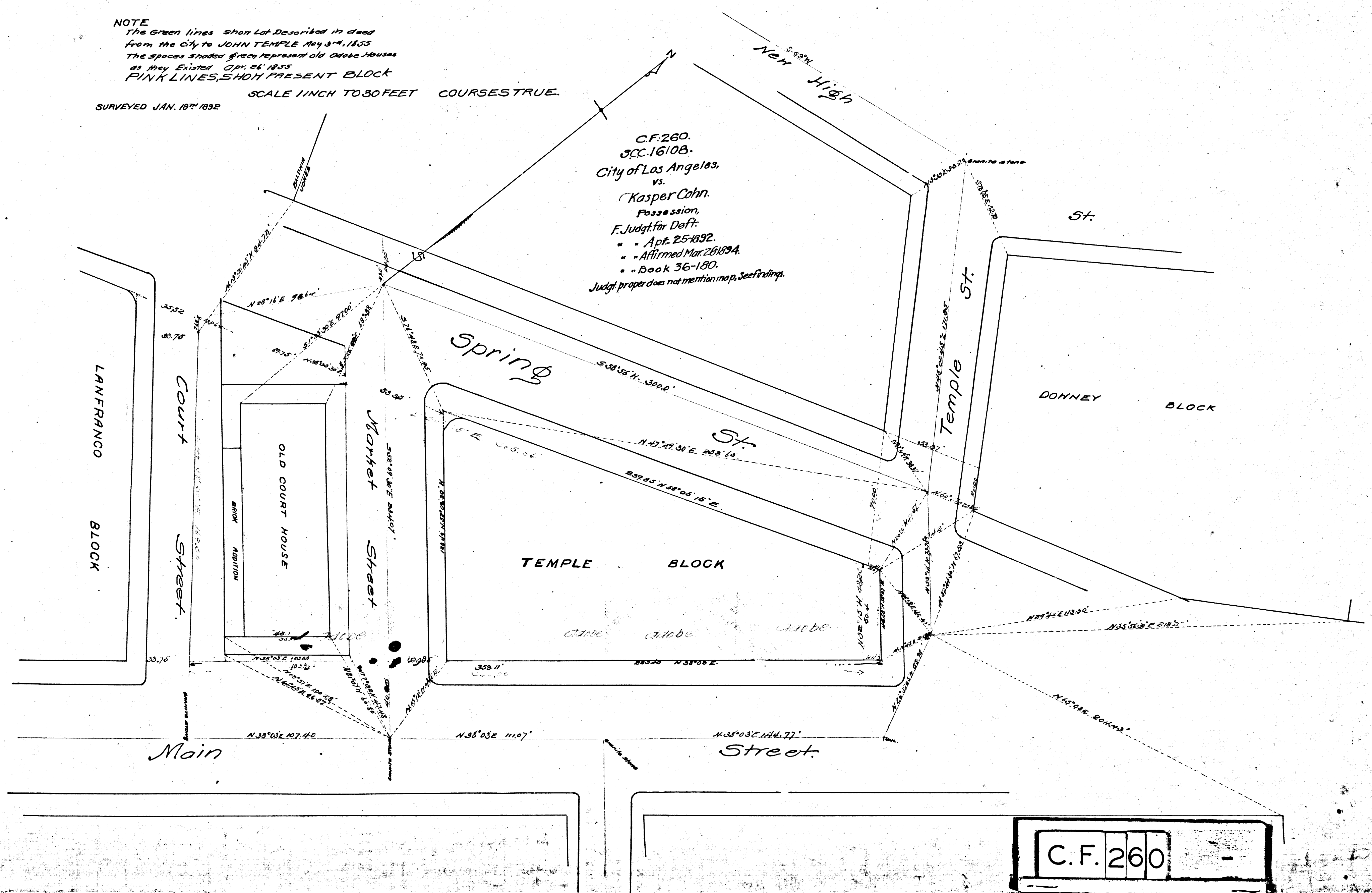


NOTE
 The Green lines show Lot Described in deed
 from the City to JOHN TEMPLE May 3rd, 1855
 The spaces shaded green represent old Adobe Houses
 as they existed Apr. 26, 1855
 PINK LINES, SHOW PRESENT BLOCK

SCALE 1/4 INCH TO 30 FEET COURSE TRUE.
 SURVEYED JAN. 18th 1892

C.F. 260.
 J.C.C. 16108.
 City of Los Angeles,
 vs.
 Kasper Cohn.
 Possession,
 F. Judgt. for Deft.
 • • Apr. 25-1892.
 • • Affirmed Mar. 26-1894.
 • • Book 36-180.
 Judgt. proper does not mention map. See findings.



C.F. 260

Filed Jan 28, 1892.

