

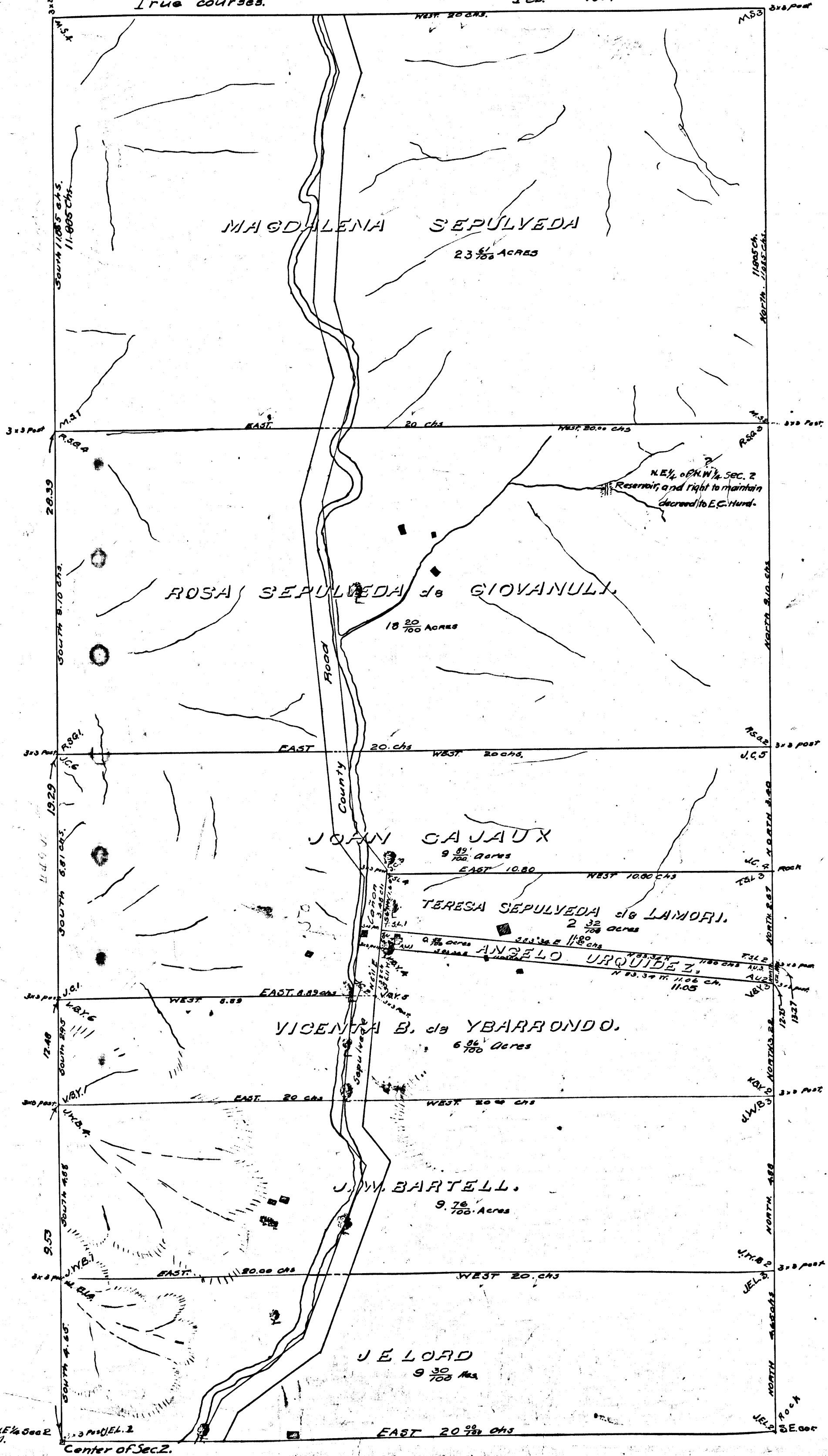
MAP OF
W. 1/2 of N. E. 1/4 Sec. 2,
T. 1 S., R. 14 W.,
S. B. M.

CONTAINING 80.49 ACRES
Partitioned by order of the Superior Court
of Los Angeles Co. Cal.
dated June 2nd 1893.
Sepulveda Canyon Road changed to Canyon Drive Ord. 47200

See C.S. 3055
" " 8050
" " 6649
C.F. 272.
S.C.C. 19137.
Vicente B. de Ybarrondo.
vs.
George Sanchez.
Partition.
F. Judgt. for P.M. June 20-1894.
" Book 46-147.
By this Map as noted in Brown.
Sole referee

Scale 2 chains to 1 inch.
True courses.

Feb. 1894



C.F. 272 -

S. 1/4 corner of N.E. 1/4 Sec. 2
T. 1 S., R. 14 W., S. B. M.
Center of Sec. 2.

