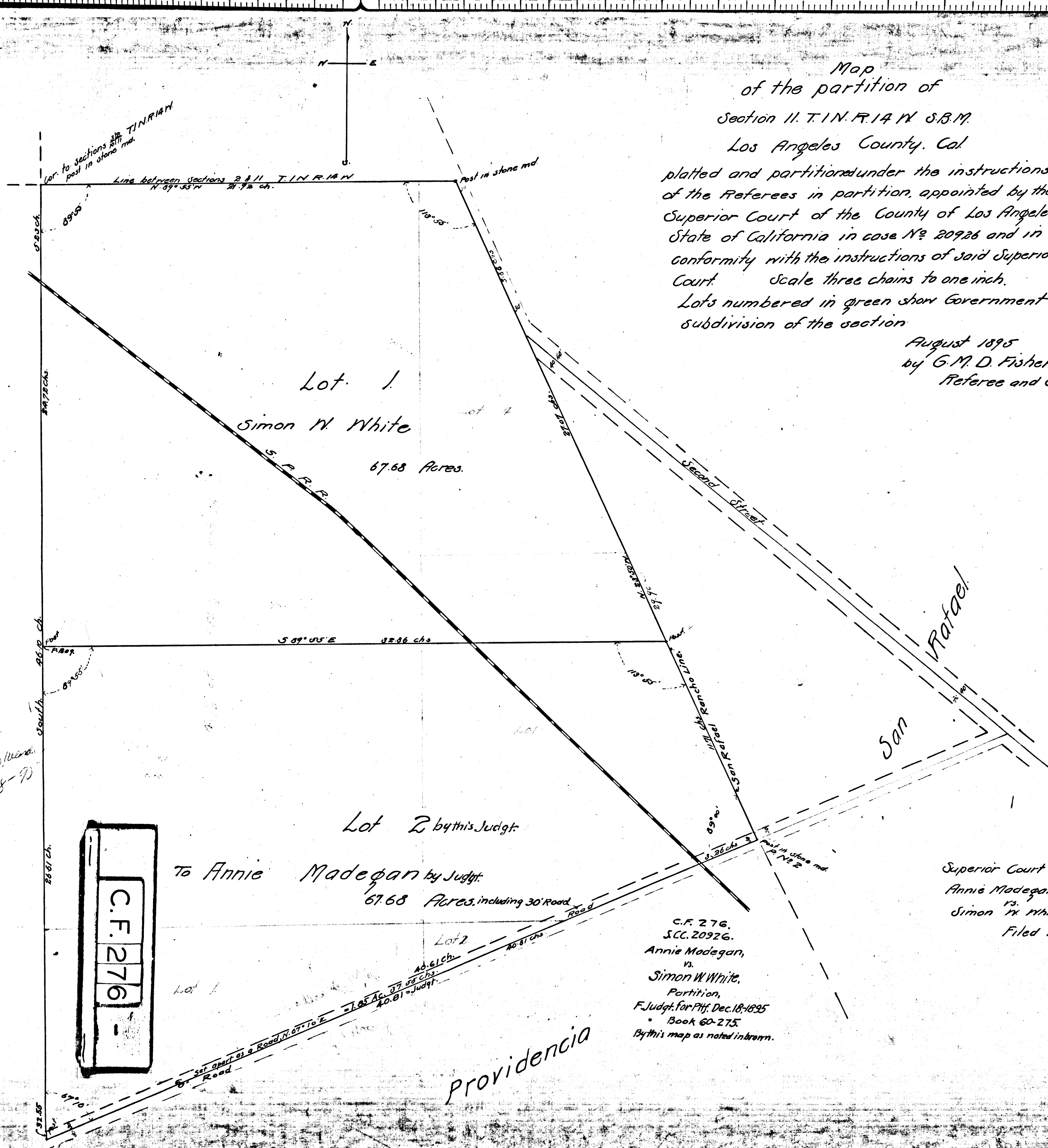


Map  
of the partition of  
Section 11, T. 1 N. R. 14 W. S. B. M.  
Los Angeles County, Cal.

platted and partitioned under the instructions  
of the Referees in partition, appointed by the  
Superior Court of the County of Los Angeles  
State of California in case No. 20926 and in  
conformity with the instructions of said Superior  
Court Scale three chains to one inch.  
Lots numbered in green show Government  
subdivision of the section

August 1895  
by G. M. D. Fisher,  
Referee and Surveyor.



C.F. 276

Lot 2 by this Judgt.  
To Annie Madegan by Judgt.  
67.68 Acres, including 30' Road

C.F. 276,  
S.C.C. 20926,  
Annie Madegan,  
vs.  
Simon W. White,  
Partition,  
F. Judgt. for P.H. Dec. 18, 1895  
Book 60-275.  
By this map as noted in return.

Superior Court Case No. 20926  
Annie Madegan  
vs.  
Simon W. White  
Filed Dec. 29 1895