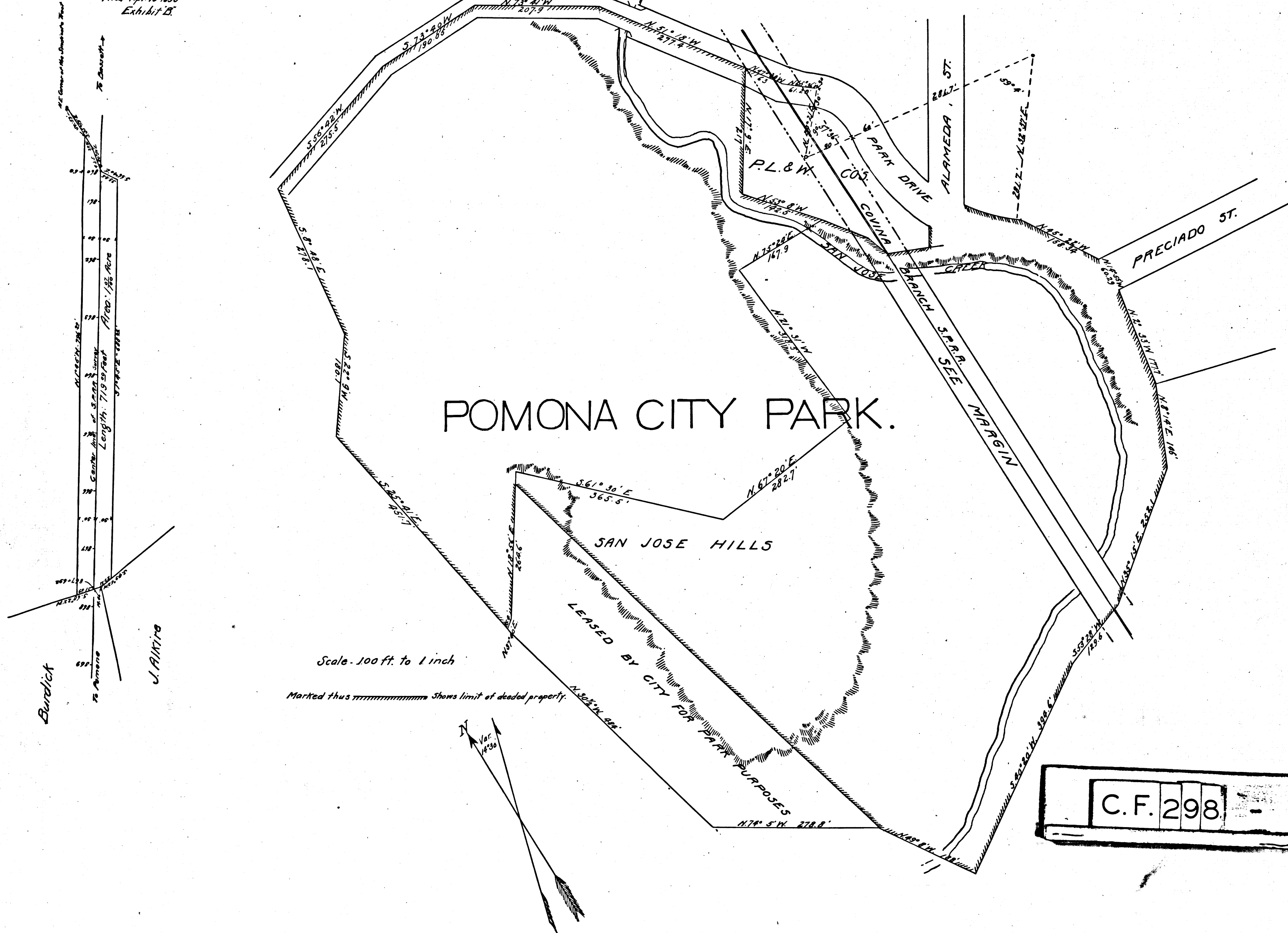


Plat
of
Property to be condemned for Right of Way of
SOUTHERN PACIFIC RAILROAD
through the
CITY PARK, POMONA
Los Angeles County, California.

Scale: One Inch = 100 Feet.
Filed Apr. 16, 1896
Exhibit B.

Superior Court Case #25242
S.P.R.R. Co.
vs
City of Pomona
Filed Apr. 8, 1896
Plffs. Exhibit No. 1
Condemnation.
Final Judgment for Plaintiff, Apr. 11, 1896.
- Book, 63-65



Scale - 100 ft. to 1 inch

Marked thus Shows limit of deeded property.

C.F. 298