

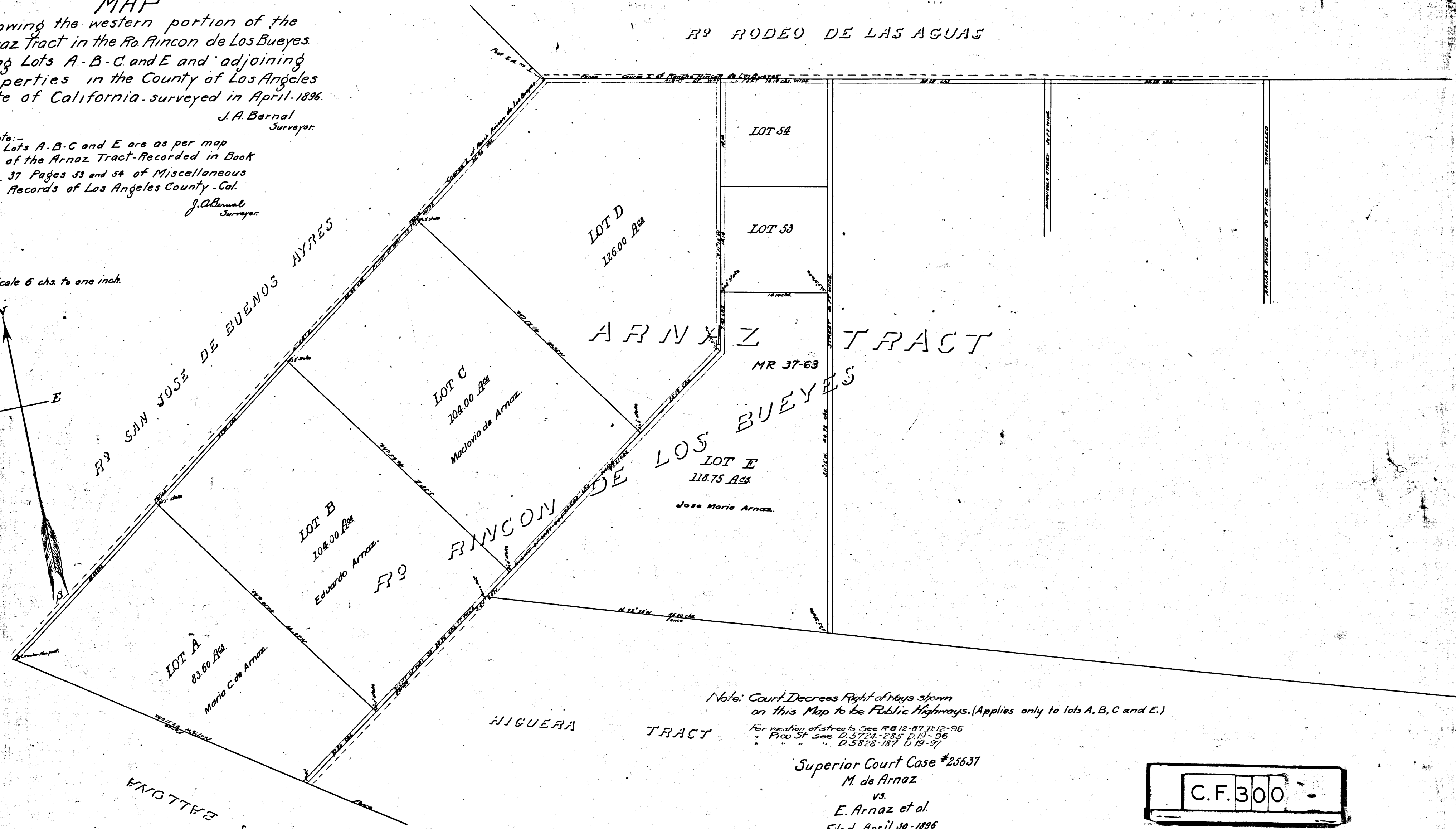
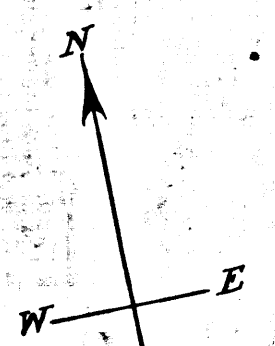
MAP
 Showing the western portion of the
 Arnaz Tract in the Ra. Rincon de Los Bueyes
 being Lots A-B-C and E and adjoining
 properties in the County of Los Angeles
 State of California - surveyed in April-1896.

J. A. Bernal
 Surveyor.

Note: -
 Lots A-B-C and E are as per map
 of the Arnaz Tract - Recorded in Book
 37 Pages 53 and 54 of Miscellaneous
 Records of Los Angeles County - Cal.

J. A. Bernal
 Surveyor.

Scale 6 chs. to one inch.



Note: Court Decrees Right of Ways shown
 on this Map to be Public Highways. (Applies only to lots A, B, C and E.)

For location of streets See P.B. 12-87 D. 12-95
 " P.C. 5724-285 D. 19-96
 " " D. 5828-187 D. 19-97

Superior Court Case #25637
 M. de Arnaz
 vs.
 E. Arnaz et al.
 Filed - April 30 - 1896

Partition
 Judgment, April 25-1896.
 " Book. 63-94.

Note: - Judgment mentions Lots A, B, C & E, only.
 Figures in brown are from Judgment.
 See D: 34-153 & 160 for opinion of Dist. Att.

C.F. 300

937

VIMCO

937

937

VIMCO

937