

Superior Court Case # 25898
 J. Garnier
 vs.
 P. Grevolin
 Filed Jan. 27-1897.
 Partition.
 Judgment of Partition, Feb. 2-1897.
 " Book. 70-3.

MAP of the GARNIER TRACT

located in the
 City of Los Angeles, County of Los Angeles, State of California
 showing partition of the Northeast quarter of Section 26 T. 1 S. R. 14 W. San
 Bernardino Base and Meridian, made by the referee in partition under the interlocutory
 decree of the Superior Court in and for Los Angeles County, State of California of date December 11th 1896
 in the case (No. 25898) entitled Josephine Garnier plaintiff, vs. Pierre Grevolin et als defendants,
 Surveyed under direction of the referee in partition

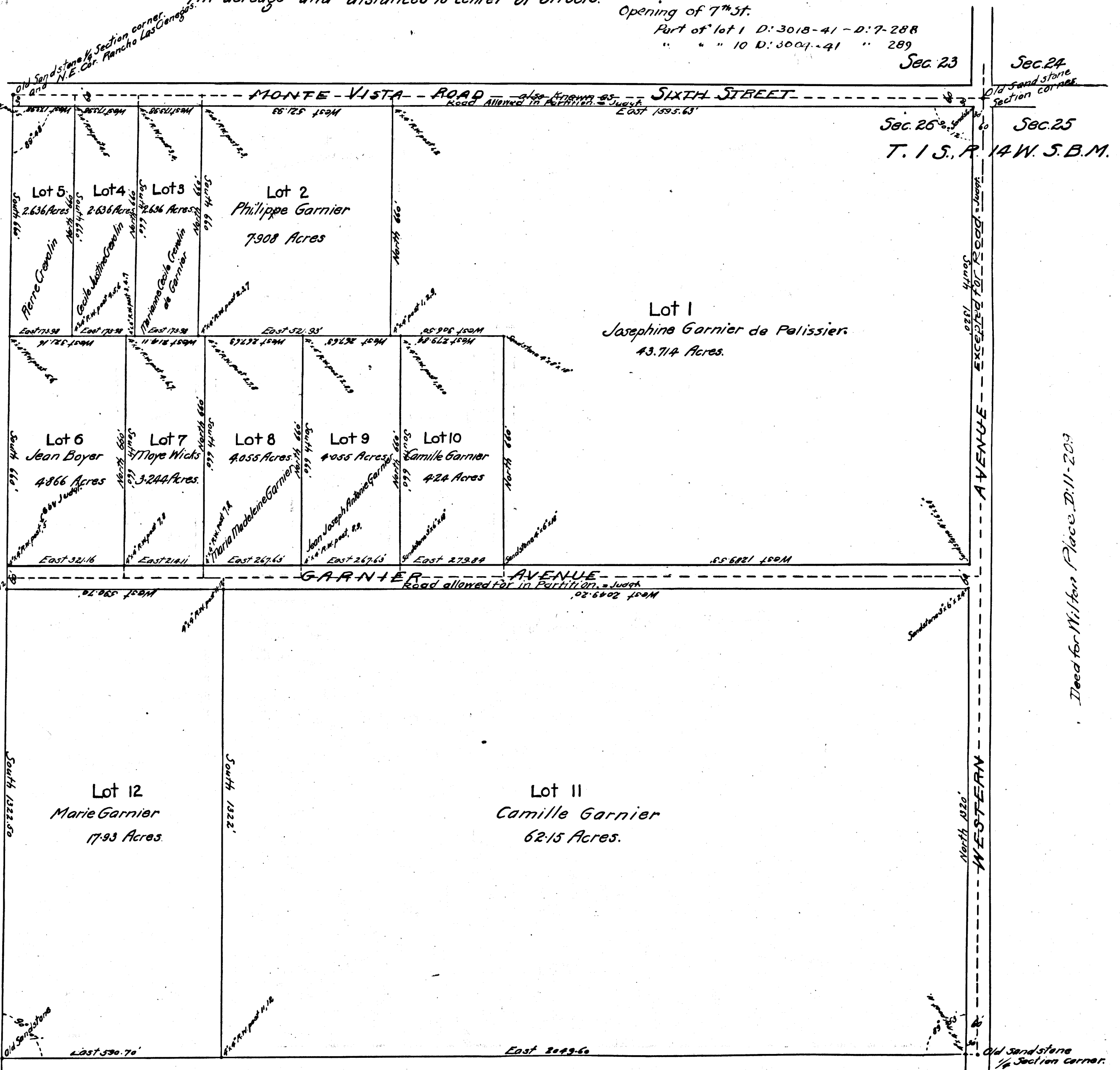
by *J. Rowan*
 Licensed Surveyor.
 December 1896 and January 1897.

True Courses, Variation 14° 30' East.
 Scale 200 feet to one inch.
 All distances in feet
 All acreage and distances to center of Streets.

Opening of 7th St.
 Part of lot 1 D: 3018-41 - D: 7-288
 " " " 10 D: 3004-41 " 289

Note: Judgment mentions property
 not shown by this map. Co. Sur.

TRUE NORTH



RANCHO LAS CIENEGAS

C.F. 303

Deed for Milton Place D: 11-209

Old sandstone 1/4 Section corner.