

THERE IS NO SATISFACTORY SUBSTITUTE FOR AN ELECTRIC CLEANER

BUY A "KENMORE"

C.F. 310, S.C. 27349.
 J. Reynier,
 vs.
 C. Elton.
 Ejectment
 Judgment for Plaintiff.
 - Mar. 7, 1898.
 - Book 83-118.
 - determines East Line Sec. 35.
 - Common Corner 35/36
 - Affirmed on appeal.
 - July 3, 1901.
 135 Cal.
 300 304.

Superior Court Case No. 27349

Filed May 24 1897

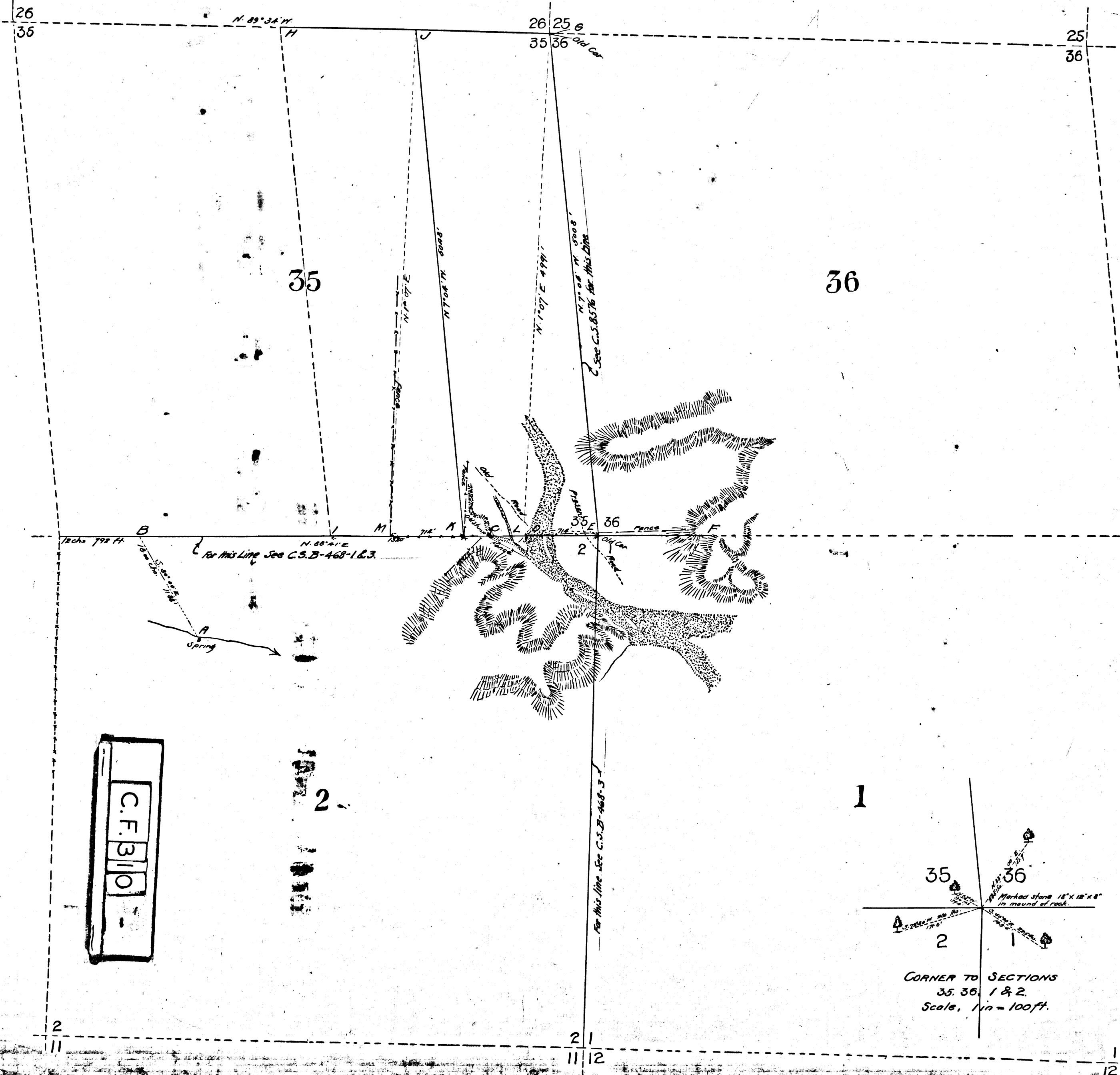
Plffs Ex 2

MAP
 Showing Sections 1, 2, 35 & 36
 T. 38 N. 15 W. S. B. M.
 Los Angeles Co.,
 Calif.

L. Friel
Surveyor

April 1897

Scale, 1 in = 500 ft.



C.F. 310

