

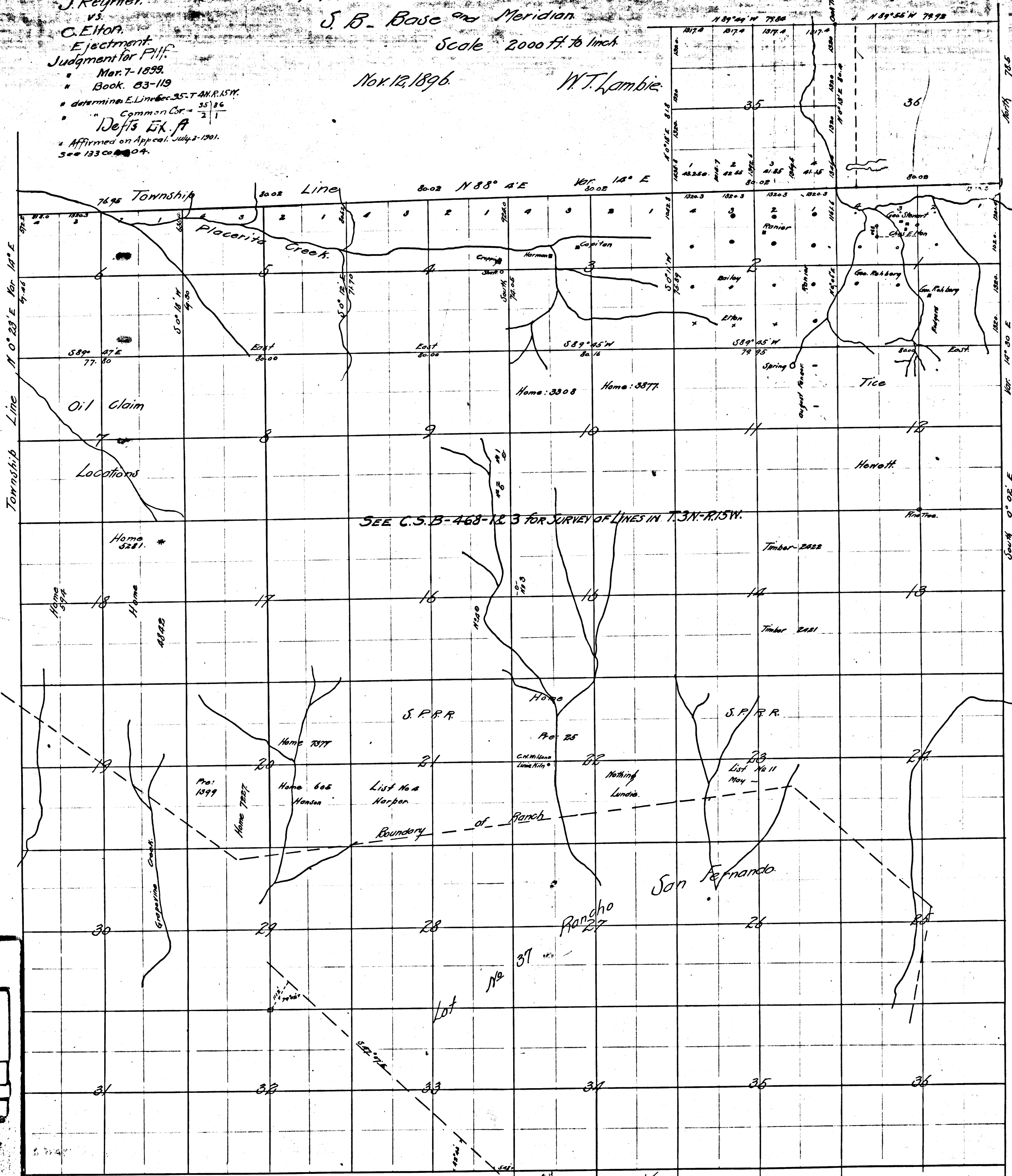
J. Reymier vs. C. Elton  
 Ejectment Judgment for Plif.  
 Mar. 7-1899.  
 Book. 83-119  
 determining E. Line Sec. 35-T. 3N-R. 15W.  
 Common Cor. = 35/26  
 Def's Ex. A  
 Affirmed on Appeal, July 2-1901.  
 See 133 Cal. 404.

Plot of T 3 N - R 15 W  
 S. B. Base and Meridian.

Scale 2000 ft. to inch

Nov. 12, 1896.

W.T. Lambie



SEE C.S.B-468-123 FOR SURVEY OF LINES IN T. 3N-R. 15W.

C.F. 3111

118

Sub Court 27349