

Plat showing lines
 as surveyed by E. T. Wright, Apr, 1898
 in Superior Court Case Number 27349
Reynier vs. Elton
 Scale 10chs to Lin.

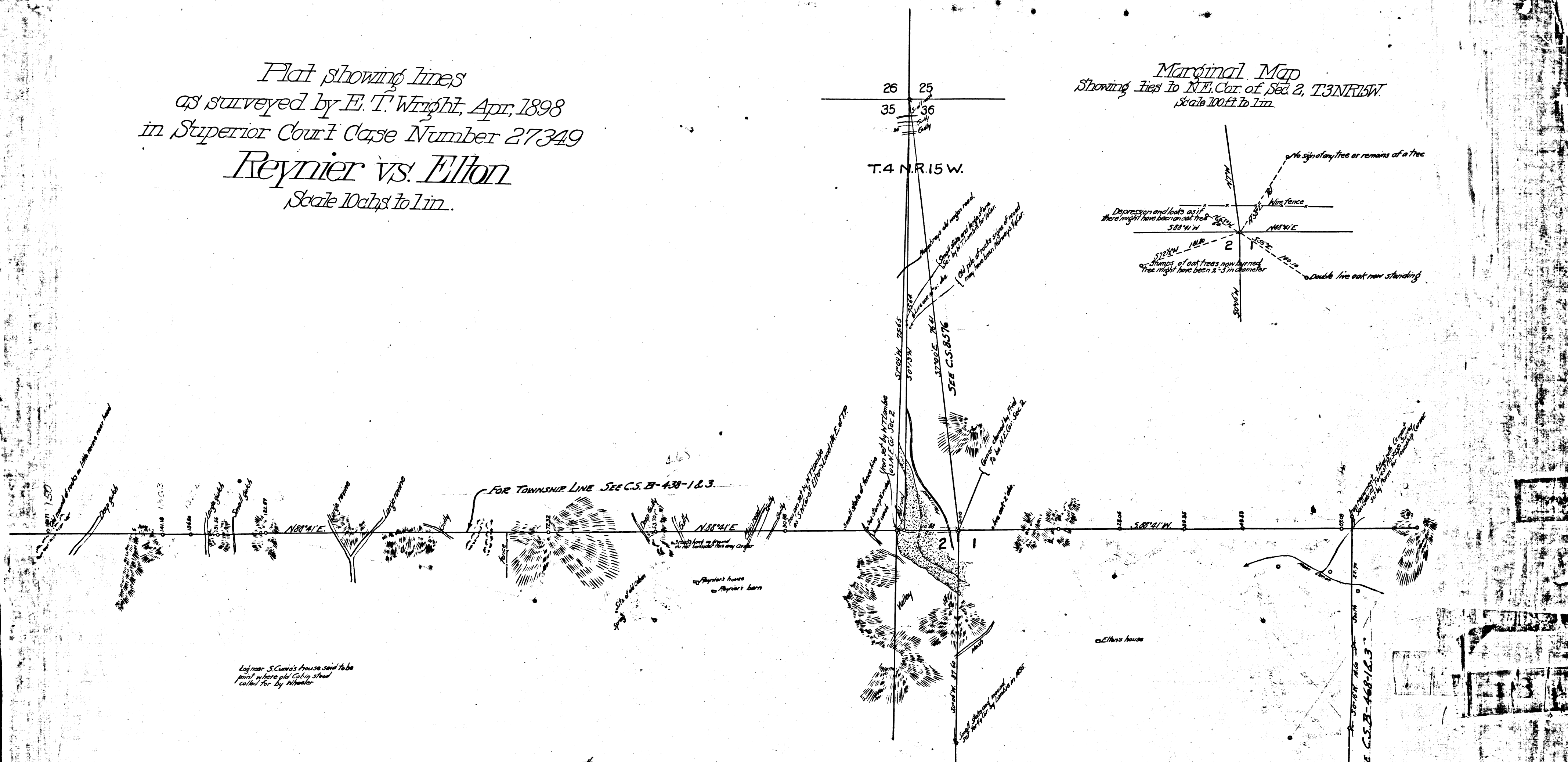
Marginal Map
 Showing lines to N.E. Cor. of Sec. 2, T.3N.R.15W.
 Scale 100ft to Lin.

VENICO
 PLSUBAVAL

50^m

VENICO
 PLSUBAVAL

50^m



Superior Court Case #27349
J. Reynier
 vs
C. Elton

Filed April 14-1898.
 Unlawful Detainer.
 Judgt. for Defendant:
 " June 25-1897.
 " Book. 72-42.
 " does not mention map.
 New Trial.
 Ejectment.
 Judgt. for Plt:
 " Mar. 7-1899.
 " Book. 83-119.
 " determines E. Line Sec. 35.
 " Common Cas = 85-36
 " Affirmed on appeal. 2-11
 " July 3-1901.
 see 133 Cal-254

Note:
 Findings of fact in this case determine the
 true easterly line of Sec. 35 T.3N.R.15W.
 S.B.B. & M. as being the line marked S7°00'E 76.41'.
 This line was established from monuments found.
 County Surveyor 9-22-1916.

C.F. 312 -