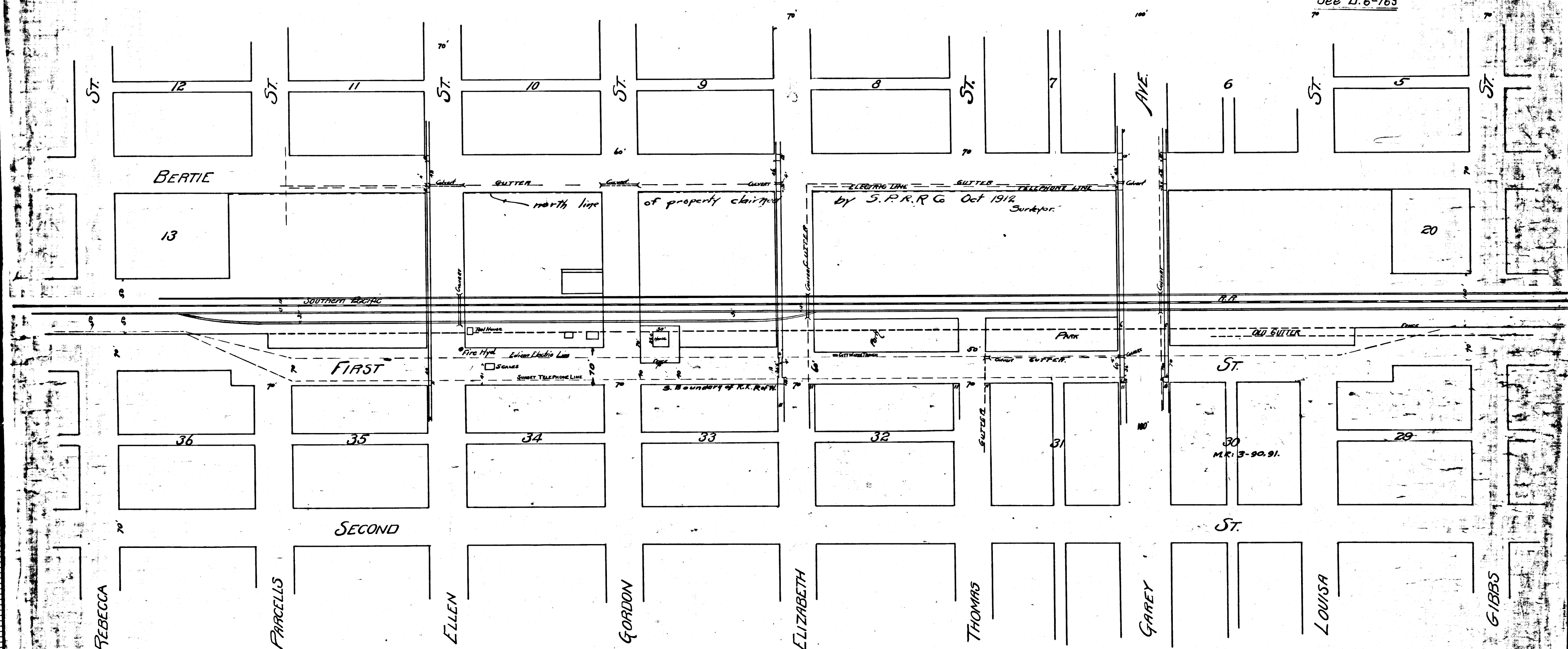


MAP  
 of  
 BERTIE ST or and  
 FIRST ST BETWEEN REBECCA ST & GIBBS ST  
 POMONA CAL.  
 Scale 1 inch = 100 feet  
 W.H. Saunders  
 City Eng.

Note  
 ——— Shows ASPHALT WALK  
 ——— Shows CEMENT WALK

This map copied from a map in S.R.R. vs City of Pomona  
 filed in Co. Clerk's office as No 327  
 See D. 6-168



C.F. 315  
 S.C.C. No 36466.  
 Southern Pacific Co.  
 vs.  
 City of Pomona.  
 Injunction.  
 Judge for Plaintiff.  
 July 24-1901.  
 Affirmed on appeal.  
 Book 97-262.

C.F. 315

