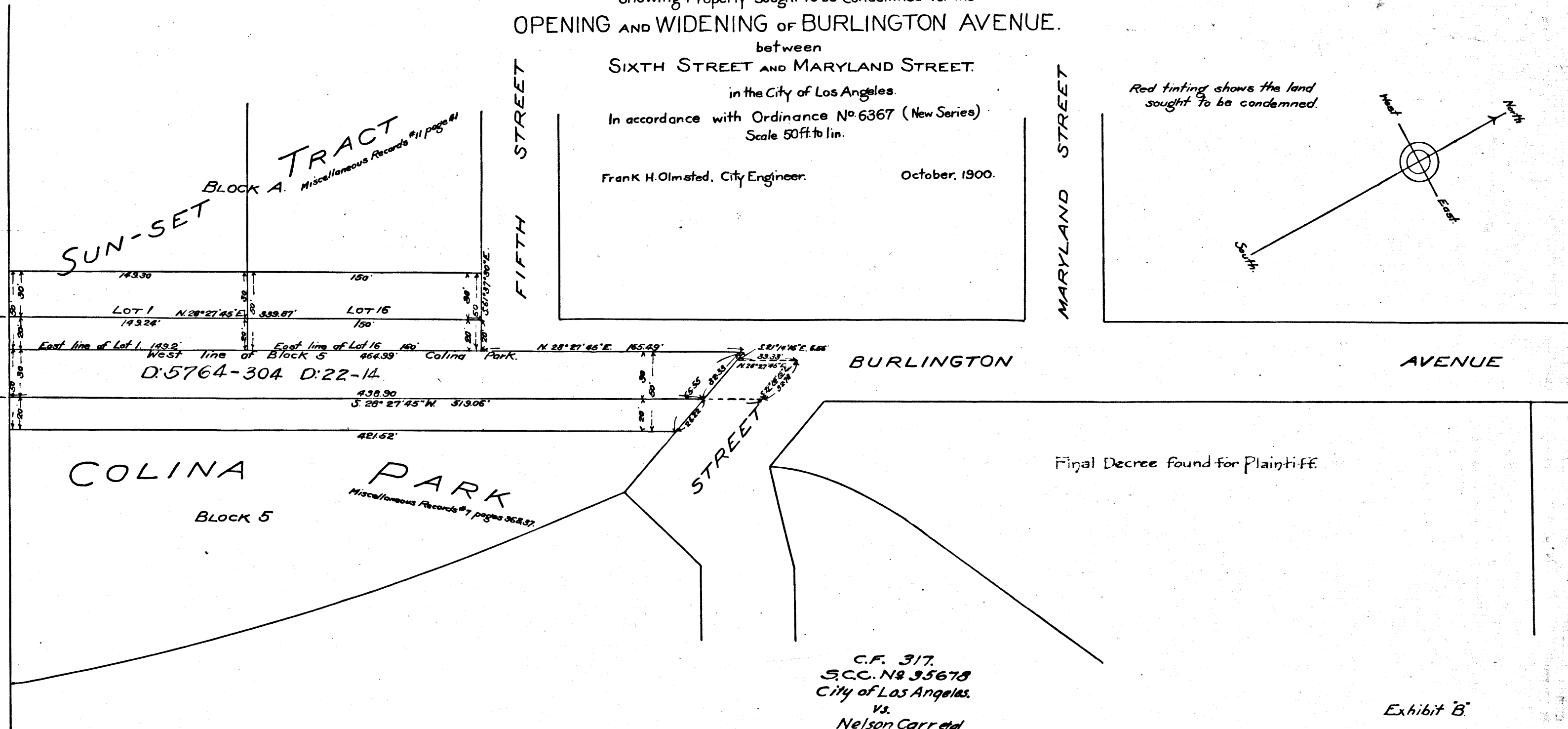
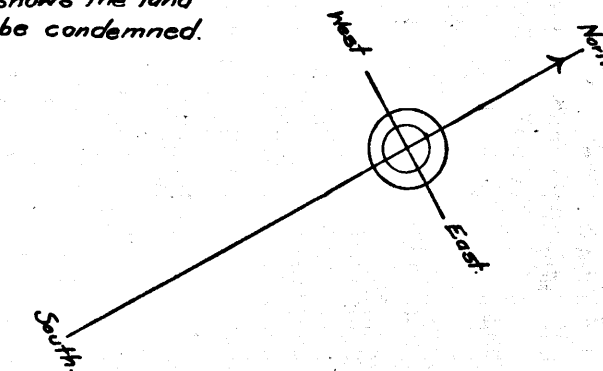


PLAT  
 Showing Property sought to be Condemned for the  
 OPENING AND WIDENING OF BURLINGTON AVENUE.  
 between  
 SIXTH STREET AND MARYLAND STREET.  
 in the City of Los Angeles.  
 In accordance with Ordinance No 6367 (New Series)  
 Scale 50ft to lin.

Frank H. Olmsted, City Engineer. October, 1900.

Red tinting shows the land sought to be condemned.



Final Decree found for Plaintiff.

C.F. 317  
 S.C.C. No 35678  
 City of Los Angeles.  
 vs.  
 Nelson Carr, et al.  
 Condemnation.  
 Judgt. for Plff.  
 " Oct. 14-1902.  
 " Book. 107-23.  
 D. 22-14.

Exhibit B

C.F. 317 -

10TH 957

VEMCO PASADENA

50TH

10TH 957

VEMCO PASADENA

10TH 957