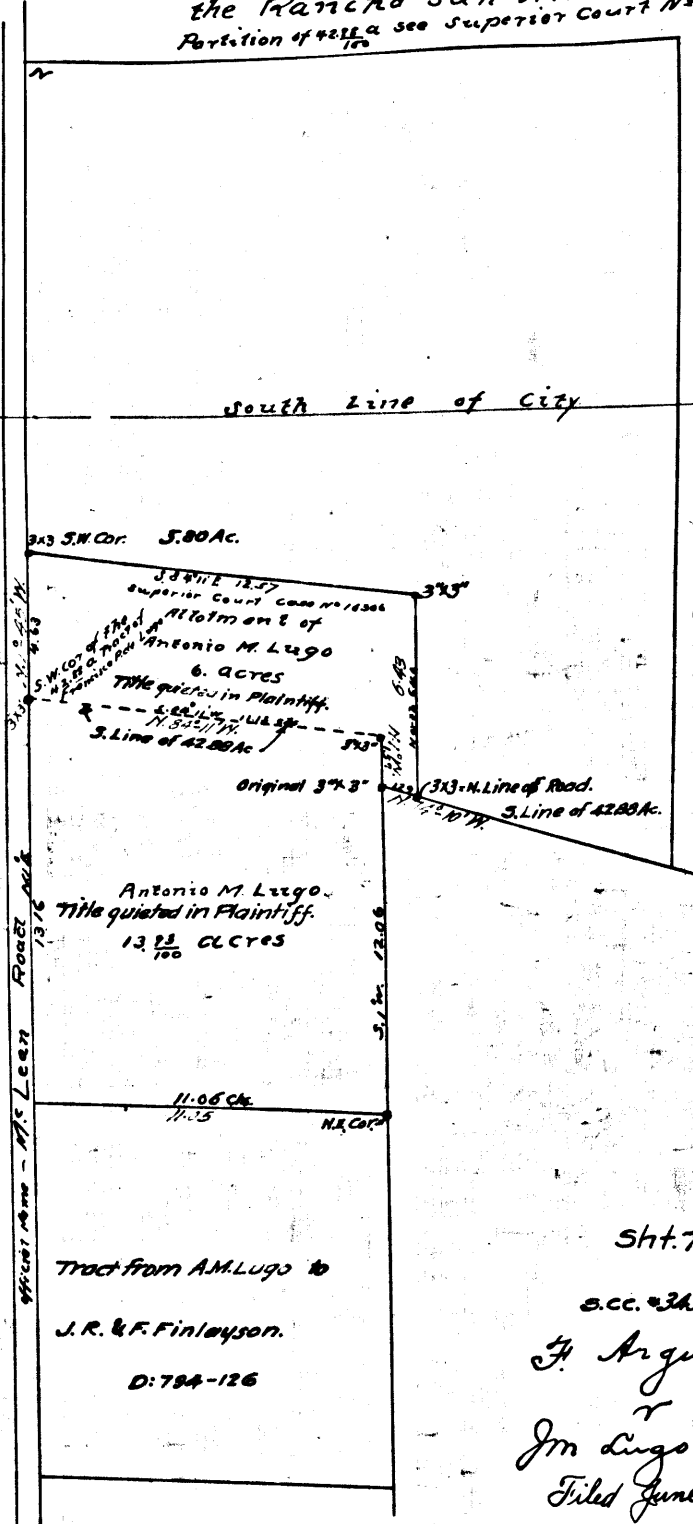


Plan showing the property
of Antonio M. Lugo in
the Rancho San Antonio L.A. Cal.
Partition of 1882 see Superior Court No 16306



Sht. 7

s.c.c. 23357

J. Arguello

Jm Lugo et al

Filed June 14 1901

DEFENDANTS EXHIBIT A

Final Judgment July 6-1901, favor of Plaintiff
quiets title in Plff.
Book 97, P. 67.

Note: All distances and bearings in red on this
map are from descriptions in case.
County Surveyor.

C.F. 321