

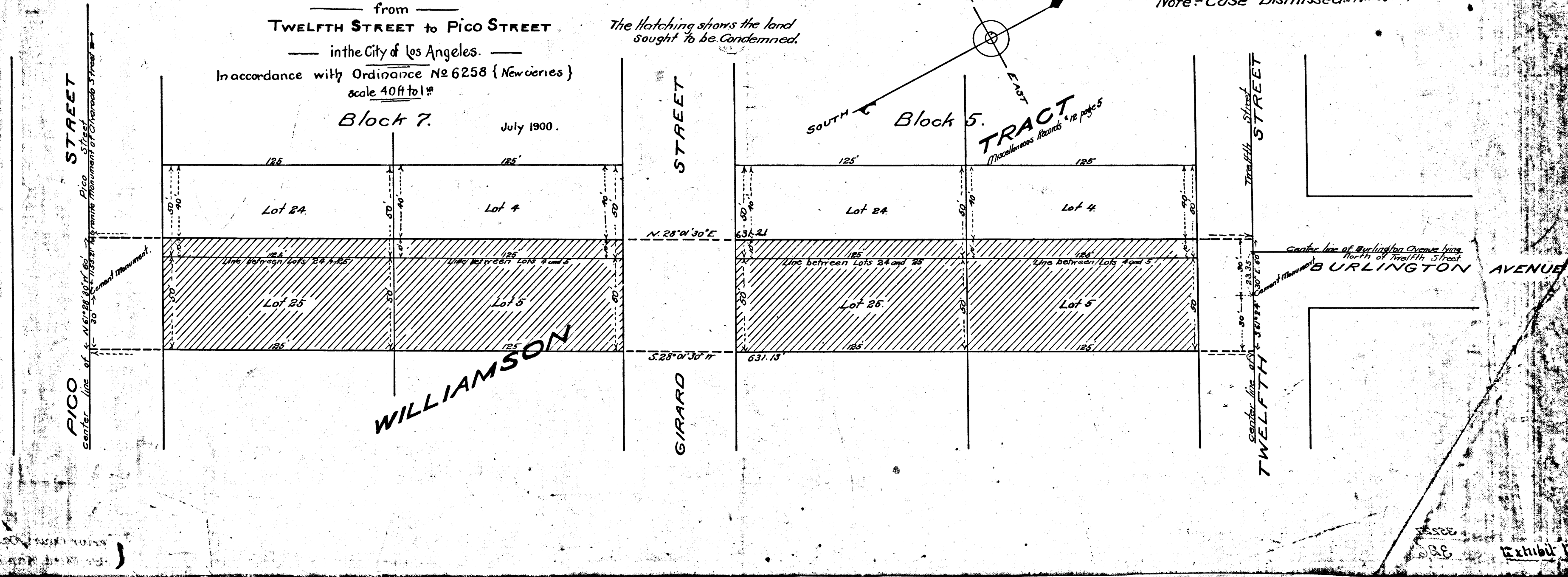
— PLAT —
 Showing Property sought to be Condemned for the
OPENING OF BURLINGTON AVENUE.

from
TWELFTH STREET to PICO STREET
 in the City of Los Angeles.
 In accordance with Ordinance No 6258 (New Series)
 scale 40ft to 1"

*The hatching shows the land
 sought to be Condemned.*

City of Los Angeles
 vs.
 M. A. Walker et al.

Note - Case Dismissed - Final Judgt. Feb. 19, 03



C.F. 326 -