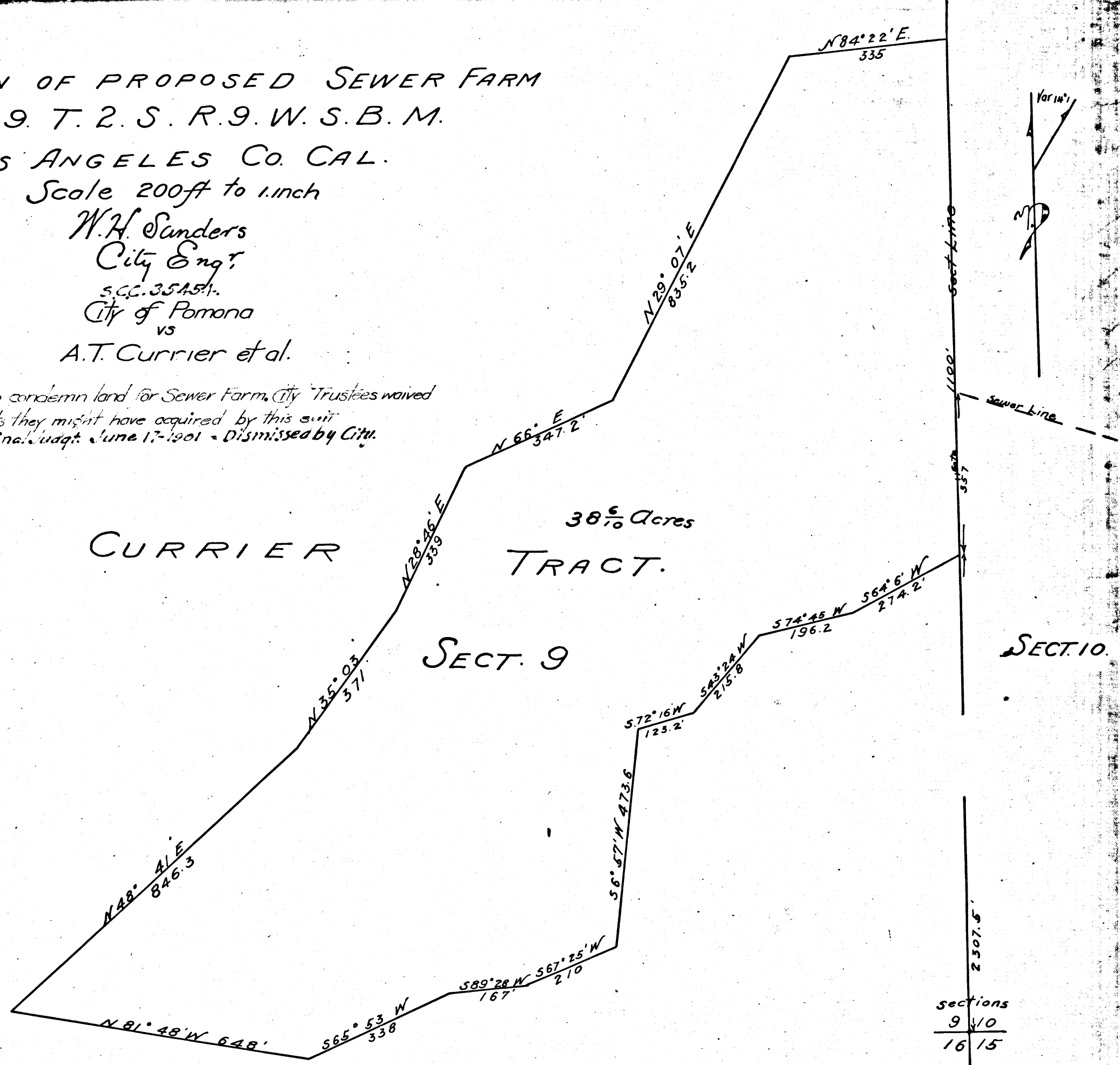


LOCATION OF PROPOSED SEWER FARM
 SECT. 9. T. 2. S. R. 9. W. S. B. M.
 LOS ANGELES CO. CAL.
 Scale 200ft to 1.inch

W.H. Sanders
 City Eng'r
 S.C.C. 35451.
 City of Pomona
 vs
 A.T. Currier et al.

Note: Suit to condemn land for Sewer Farm, City Trustees waived
 all rights they might have acquired by this suit
 Final. uagt. June 17-1901 - Dismissed by City.



Filed Sept 14 1900

C.F. 327 -