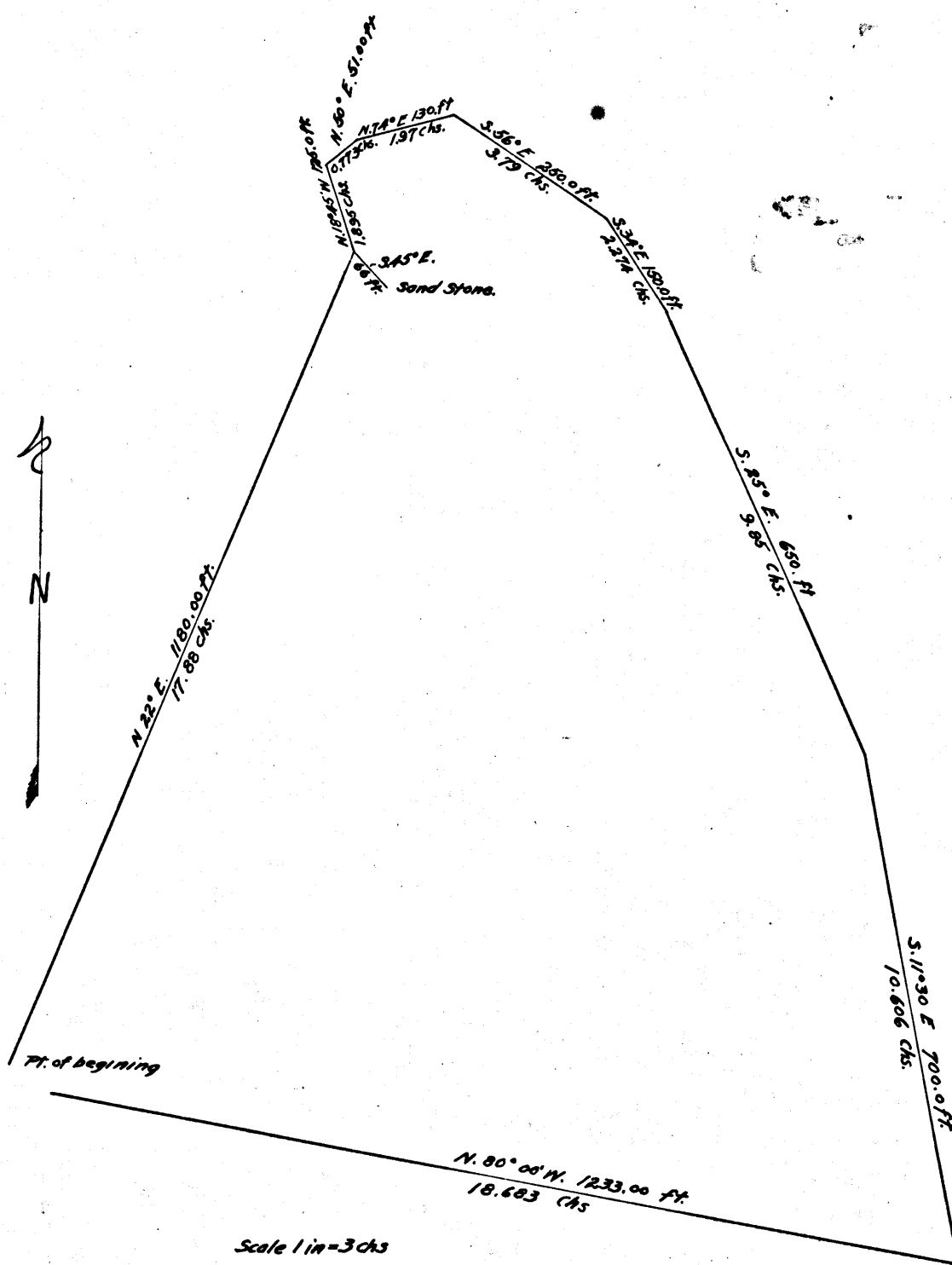


SEC. 33327  
 J.L. HARRIS  
 vs.  
 ELEANOR MARTIN et al.  
 QUIET TITLE  
 Final Judgment for PTH, Sept 29-1900  
 as per red ink line on map C.F. 335  
 Judgment book 32-240



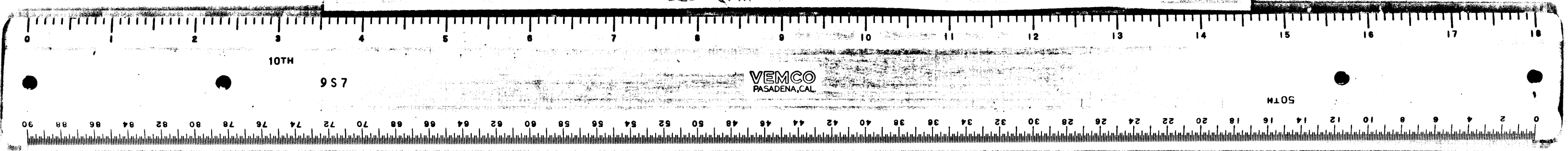
Scale 1 in = 3 chs

Defendants Exhibit 1

Roll with C.F. map 335

Roll with C.F. map 332

C.F. 335



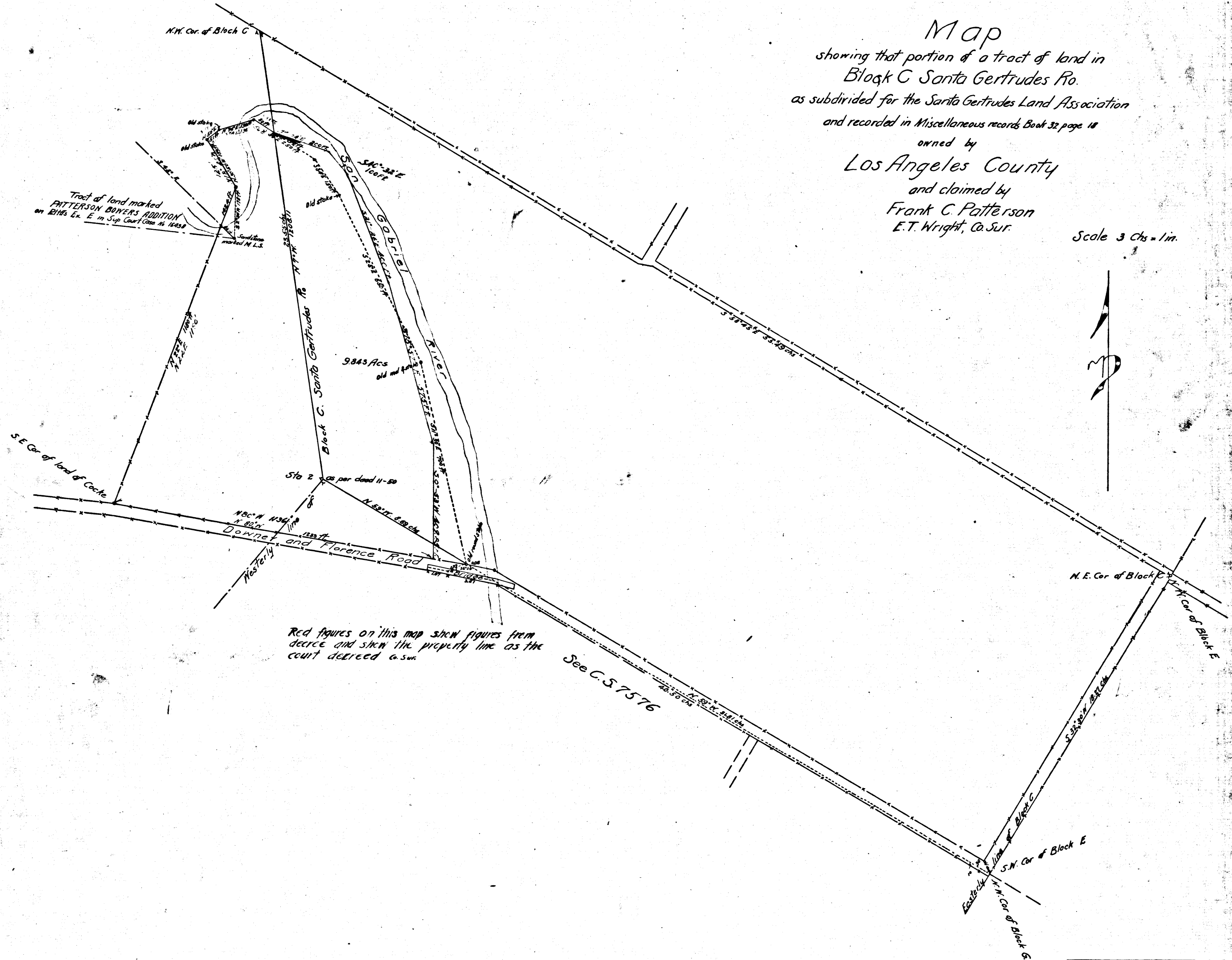
S. CC. No. 33327.  
 J. L. Harris et al  
 vs  
 E. Martin et al  
 Quiet Title  
 Note - Found for Plaintiffs  
 Final Judgment - p. 25-1900.  
 Book. 92-240.

Defendants Exhibit 2.

See C.S. 7646

Map  
 showing that portion of a tract of land in  
 Block C Santa Gertrudes Pk.  
 as subdivided for the Santa Gertrudes Land Association  
 and recorded in Miscellaneous records Book 32 page 18  
 owned by  
 Los Angeles County  
 and claimed by  
 Frank C. Patterson  
 E.T. Wright, Co. Sur.

Scale 3 Chs = 1 in.



Red figures on this map show figures from  
 decree and show the property line as the  
 court decreed to say.

See C.S. 7576

C.F. 335