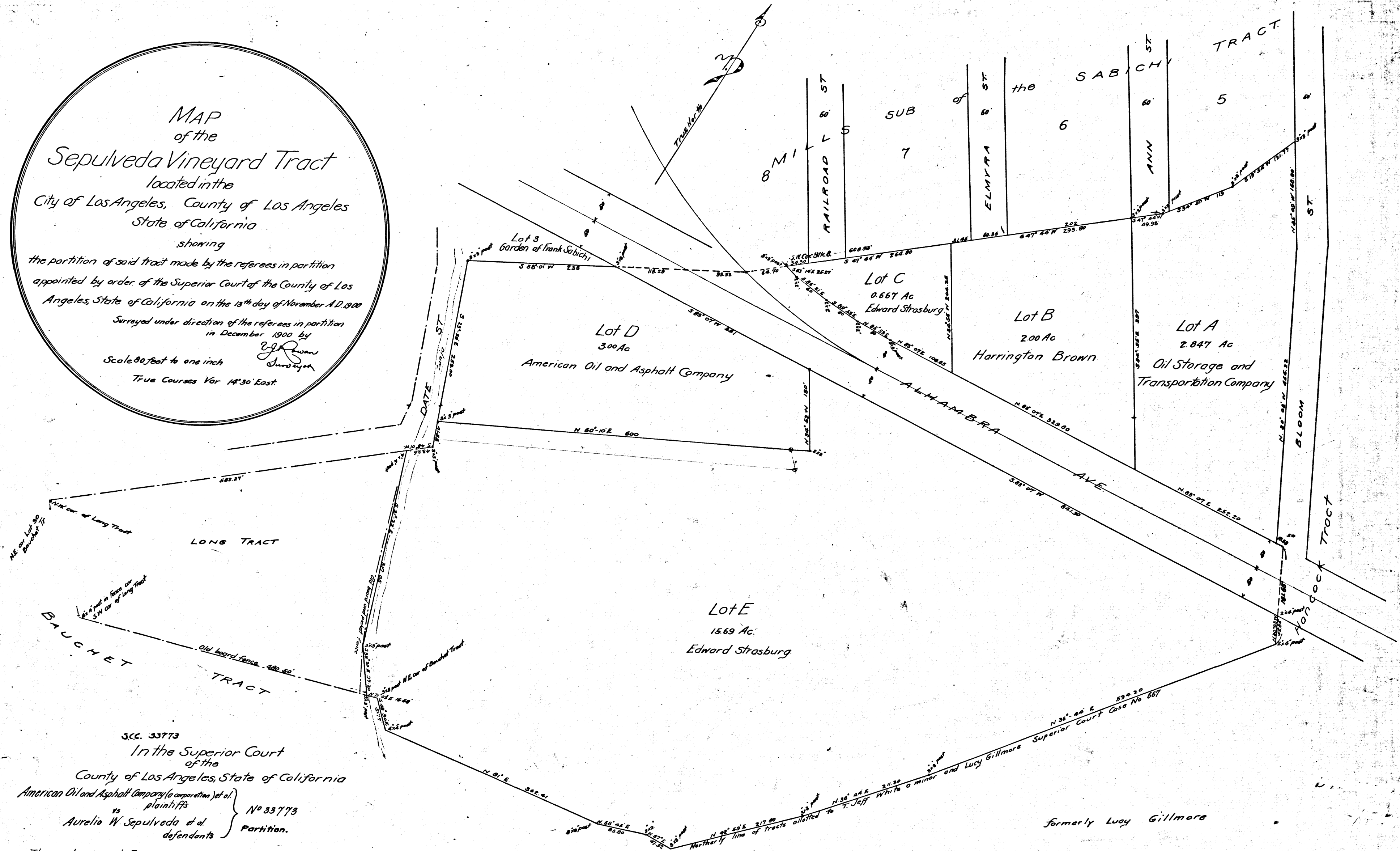


MAP
of the
Sepulveda Vineyard Tract
located in the
City of Los Angeles, County of Los Angeles
State of California
showing
the partition of said tract made by the referees in partition
appointed by order of the Superior Court of the County of Los
Angeles, State of California on the 13th day of November A.D. 1900
Surveyed under direction of the referees in partition
in December 1900 by
Scale 80 feet to one inch
True Courses Var 14° 30' East.



S.C. 33773
In the Superior Court
of the
County of Los Angeles, State of California
American Oil and Asphalt Company (a corporation) et al.
vs
Aurelia W. Sepulveda et al.
plaintiffs
vs
defendants
No 33773
Partition.

The undersigned Referees in partition appointed to make the partition
in the above matter hereby certify this to be the Map referred to
in our report of partition of this date and is made a part thereof

Richard Egan
W. Rowan
W. Washburn
Referees in partition

Partitioned Favor of Plaintiff
Final Judgment Jan. 21-1901
Book 35-30.

NOTE: Figures in brown on this map are from final Judgment.
Partitioned according to this map. Co. Sur.

Formerly T. Jeff White a minor
see S.C. No 667. Partition of T. Jeff White
Por. of lot E for Petrol St. D:35-208 O.R. 2790-19
Por. " E " " " D:35-209 O.R. 2773-52
Por. " E " " " D:35-209 O.R. 2559-196

formerly Lucy Gillmore
C.F. 336

Filed Dec 26 1900.

