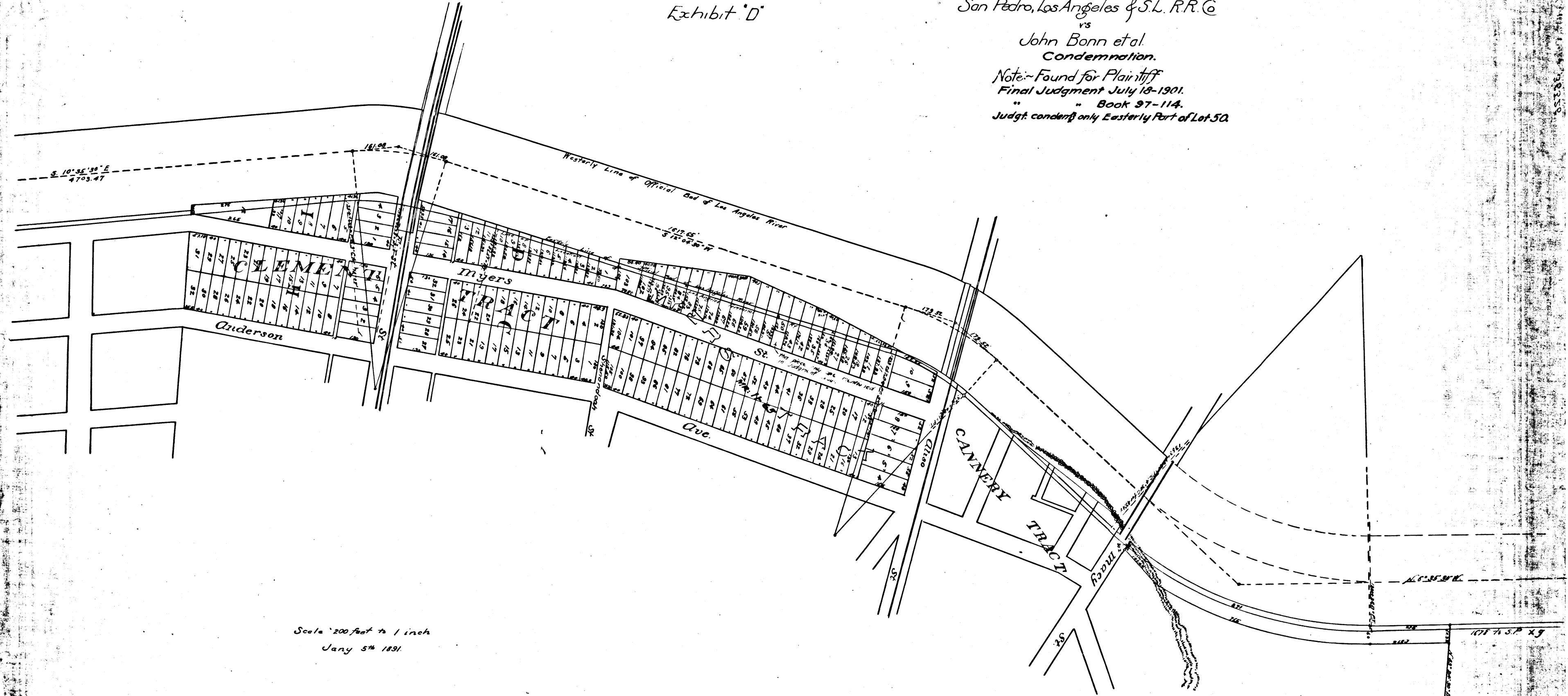


Exhibit 'D'

S.C.C. No 36526.
San Pedro, Los Angeles & S.L. R.R. Co

vs
John Bonn et al.
Condemnation.

Note: Found for Plaintiff
Final Judgment July 12-1901.
" " Book 97-114.
Judgt. condemn only Easterly Part of Lot 50.



Scale 200 feet to 1 inch
Jany 5th 1891.

Filed July 12 1901

C.F. 339