

Exhibit A

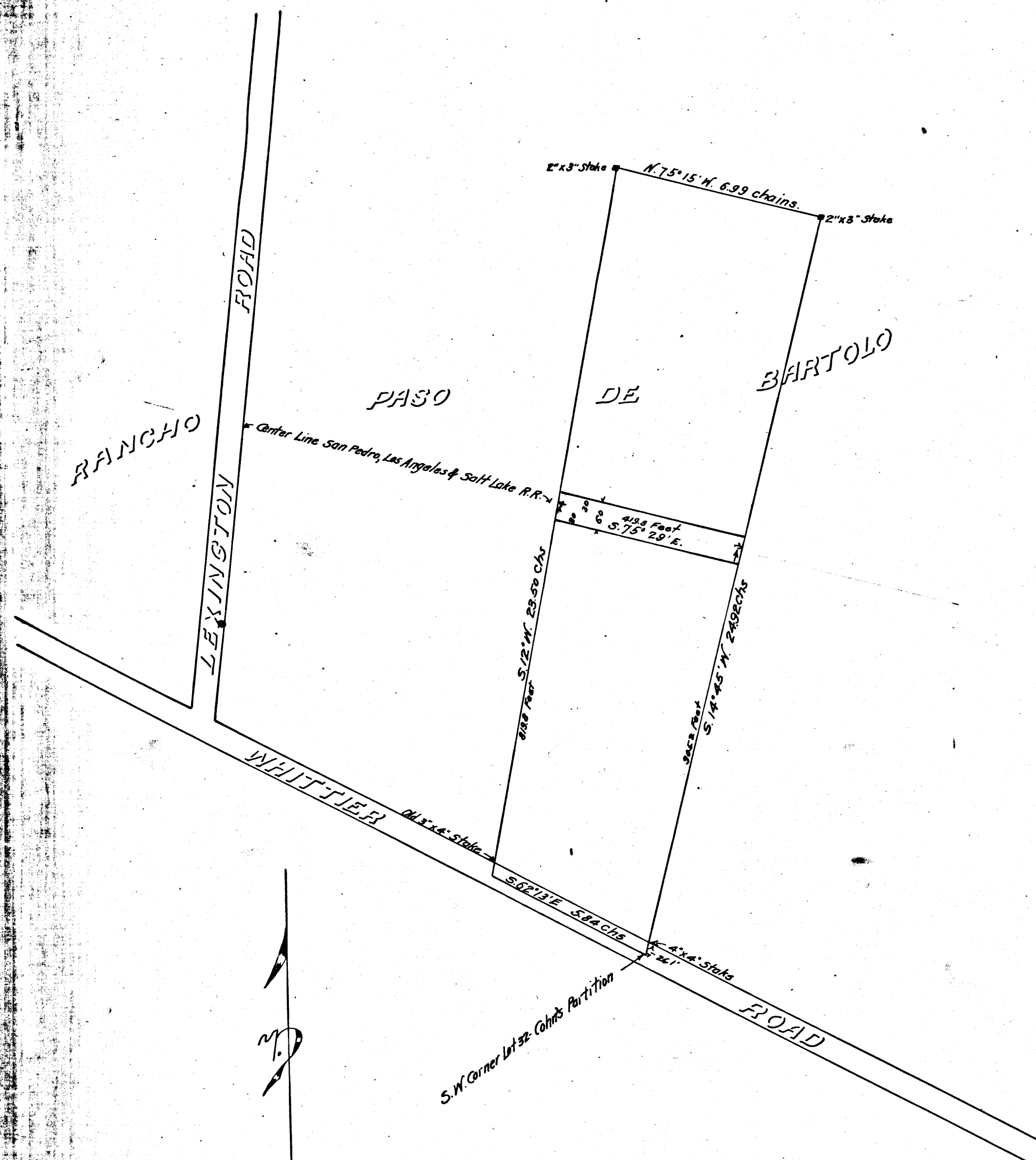
Map of Property sought to be Condemned  
by the San Pedro, Los Angeles and Salt  
Lake Railroad Company.

NOTE  
Portion colored Red indicates Land sought  
to be condemned.

San Pedro, Los Angeles & S.L. R.R. Co  
vs.

F.A. Coffman, et al.  
Condemnation.

Note: Case dismissed, Dec. 10-1901.



Filed Dec. 10, 1901.

C.F. 345