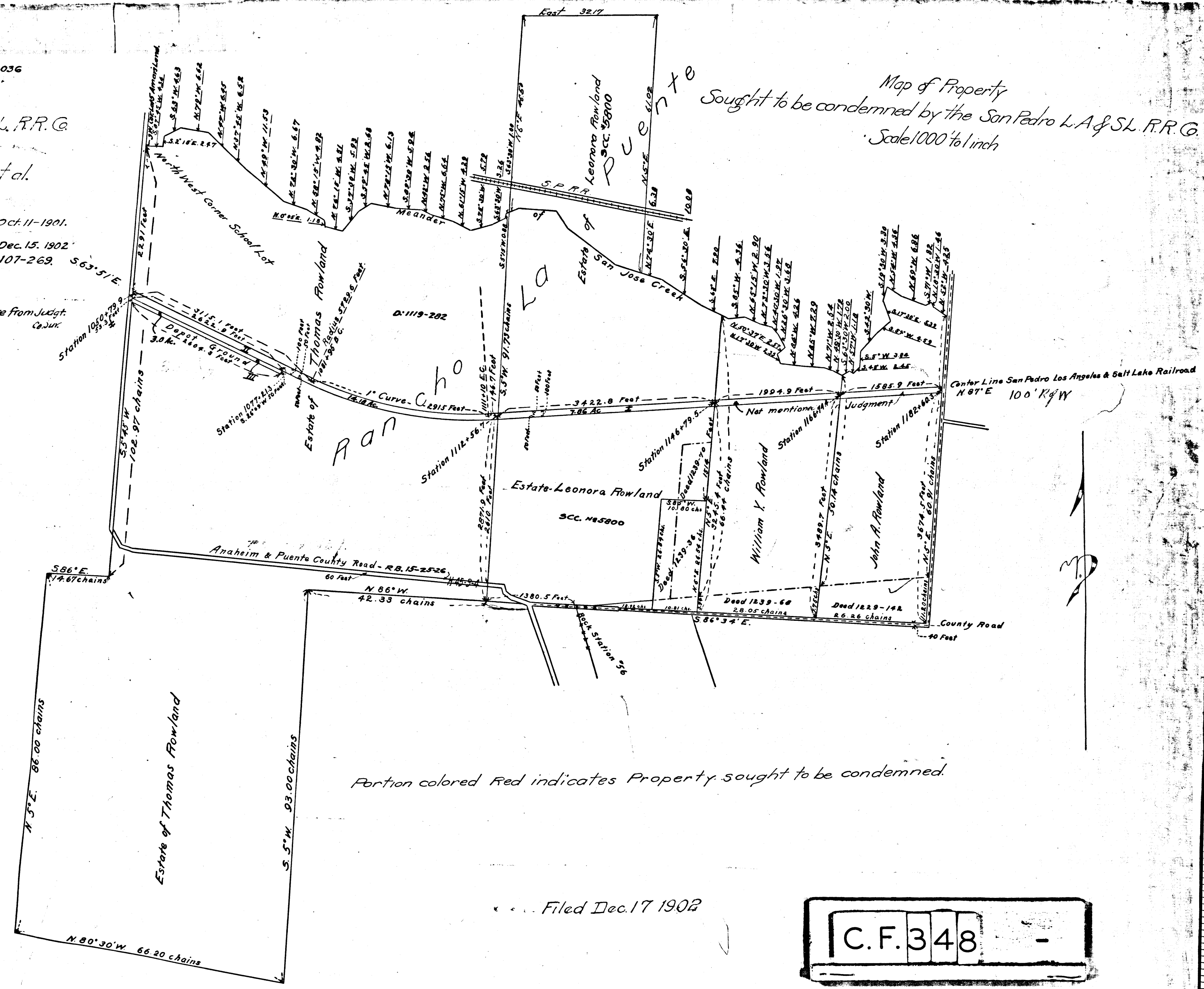


S.C.C. No 37036
 Exhibit A
 San Pedro, L.A. & S.L. R.R. Co.
 vs.
 J.A. Rowland, et al.
 Condemnation.

Int. Judgt. for Plff. Oct. 11-1901.
 Final Judgment for Plff. Dec. 15, 1902.
 " " Book. 107-269. S 63-51'E.

Note: Figures in brown are from Judgt. Ca. Jux.

Map of Property
 Sought to be condemned by the San Pedro L.A. & S.L. R.R. Co.
 Scale 1000 to 1 inch



Portion colored Red indicates Property sought to be condemned.

Filed Dec. 17 1902

C.F. 348