

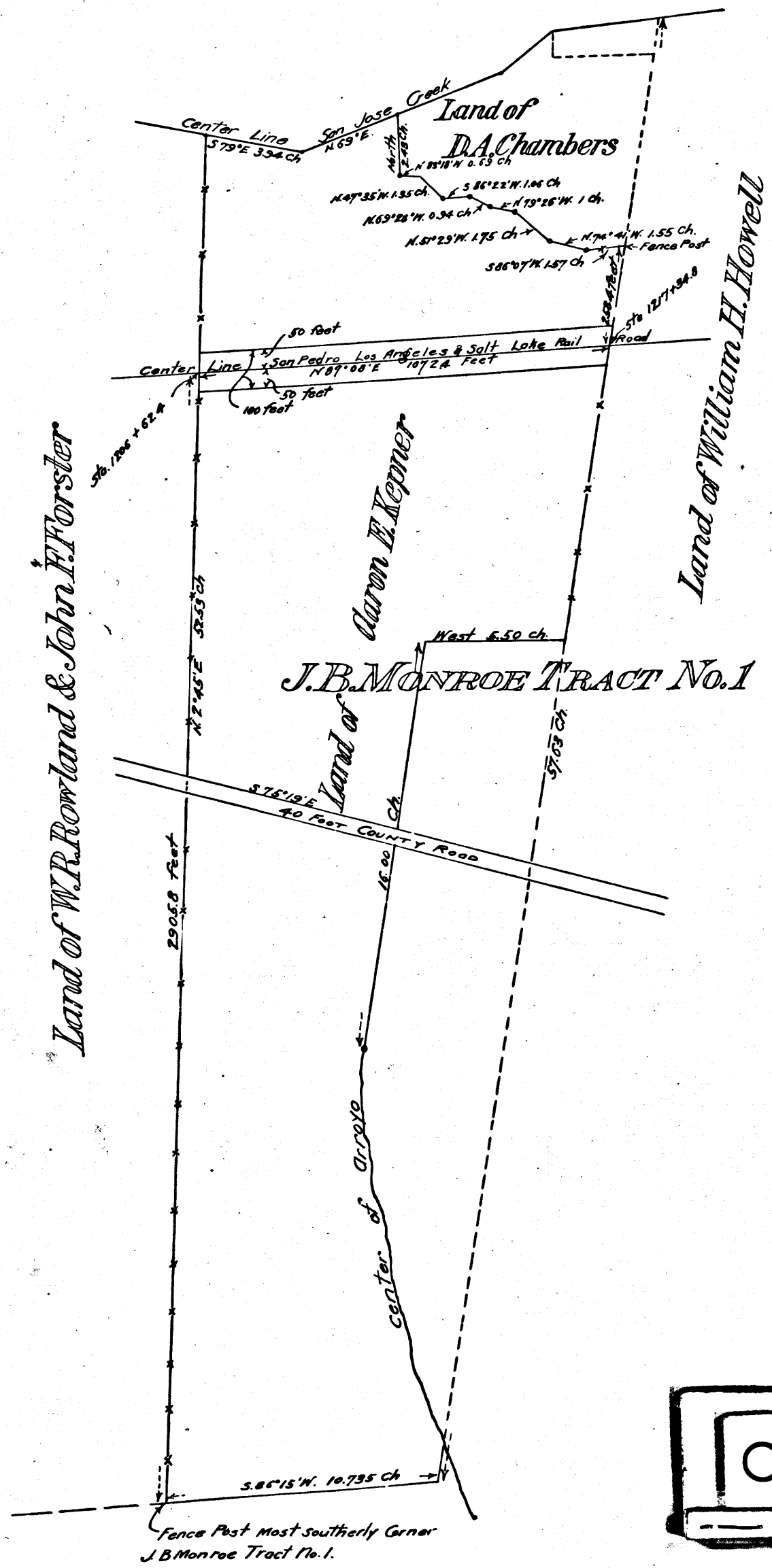
Exhibit A

San Pedro, L.A. & S.L. P.R.R. Co.

vs

A.E. Kepner et al.
Confirmation.
Note: Case dismissed.
Dismissed by Pff. Jan. 7, 1902.

Map of
Portion of J.B. Monroe Tract No. 1 in the P.O. La Puente
Showing Right of Way sought to be condemned by the
San Pedro, L.A. & S.L. P.R.R. Co.
Scale 300 to 1 inch



C.F. 349 -

Filed Sep. 7, 1901.

