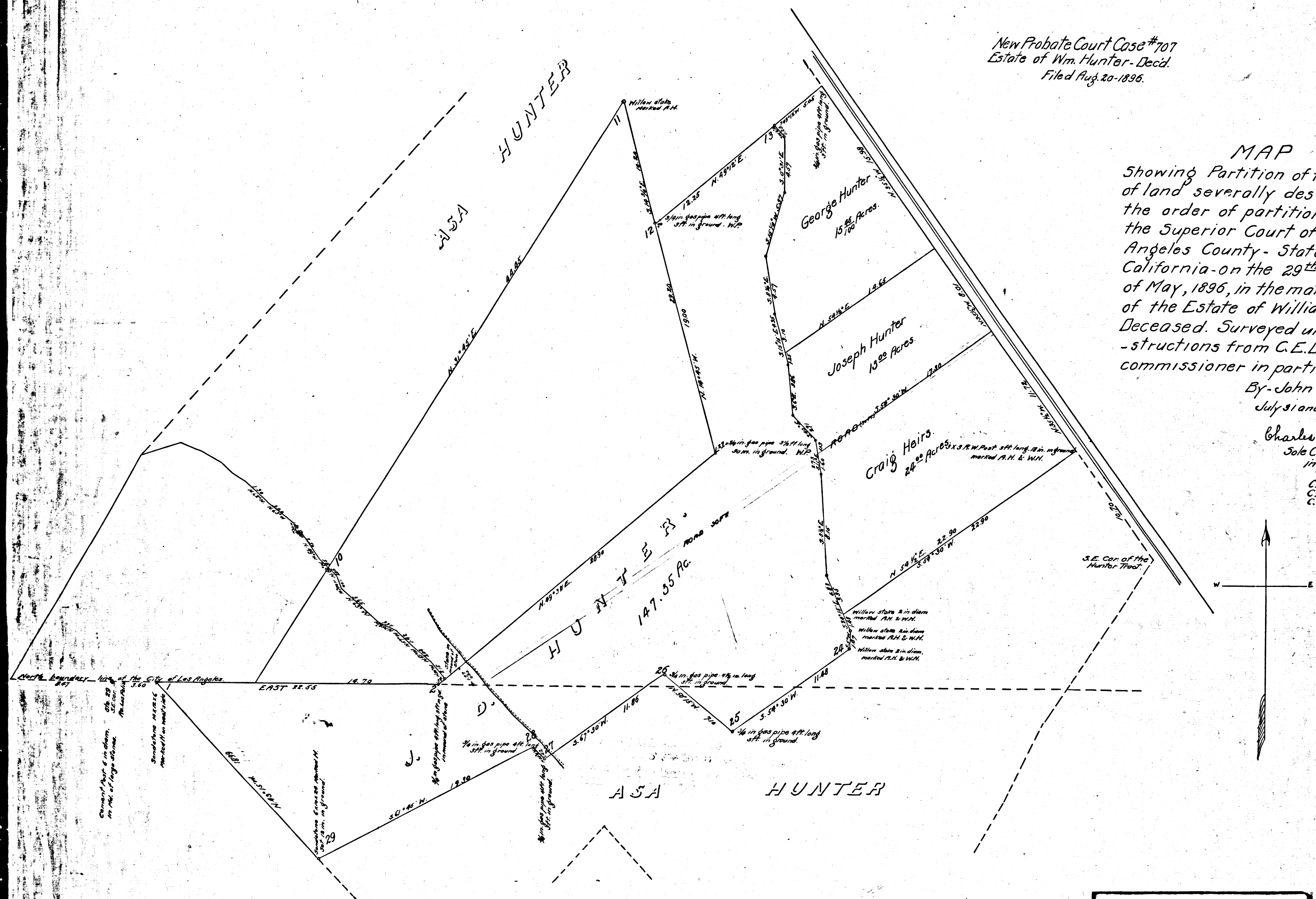


THERE IS NO SATISFACTORY SUBSTITUTE FOR AN ELECTRIC CLEANER

New Probate Court Case #707
Estate of Wm. Hunter - Decd.
Filed Aug. 20-1896.

MAP
Showing Partition of the tract
of land severally described in
the order of partition made by
the Superior Court of Los
Angeles County - State of
California - on the 29th day
of May, 1896, in the matter
of the Estate of William Hunter
Deceased. Surveyed under in-
structions from C. E. Day, sale
commissioner in partition
By - John Goldsworthy
July 31 and Aug. 1-1896
Charles E. Day
Sole Commissioner
in partition.
C.S. 3362
C.S. 6615
C.S. 8055



C.F. 355