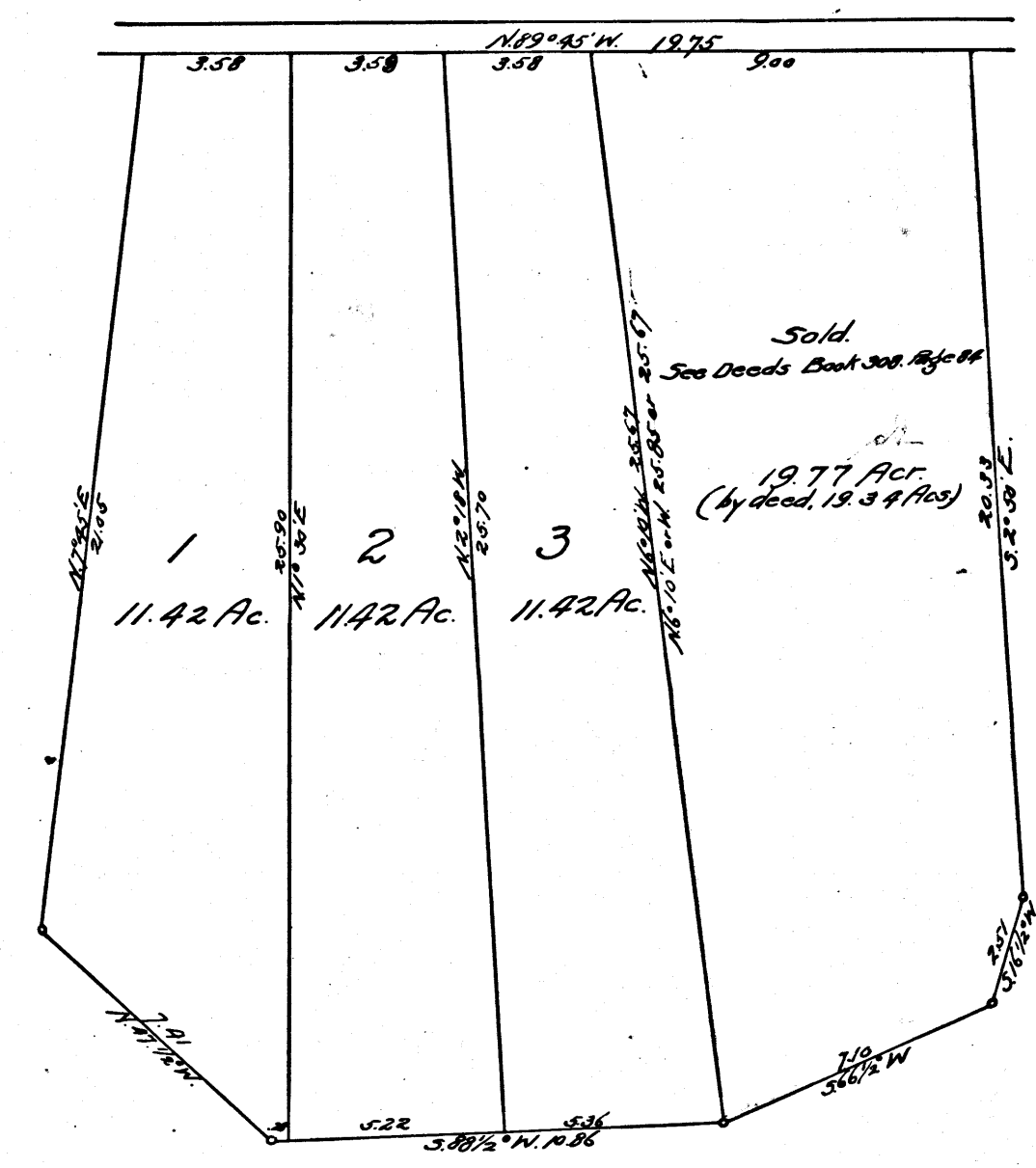


*Partition of Westerly $3\frac{1}{2}$ Acres
of Lot 41, Wallis, Subdivision of
Rancho San Rafael
Scale 4 chs = 1 in.*

*New Probate Court Case #742
Estate of Cornelius B. Erskine-Deed.
Filed Nov. 7-1896.*



C.F. 356 -

