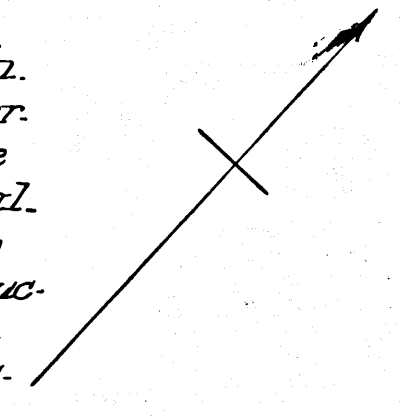


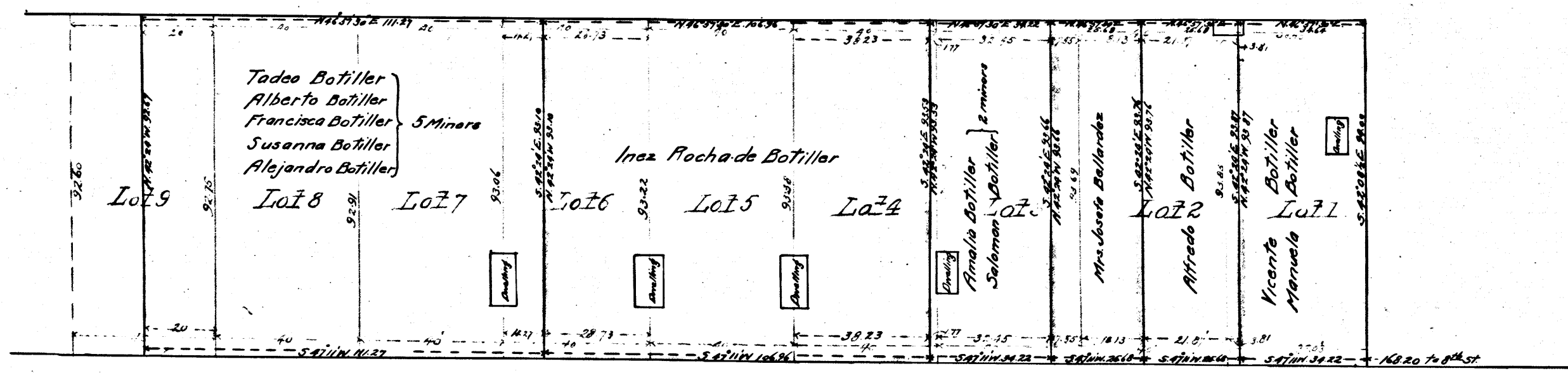


*Plat*  
 Showing partition of a part of the Brigido Botiller Subdn. of Lot 14 of the Botiller Tract described in the "Order for partition and appointing Commissioners in Partition," made by the Superior Court in and for the County of Los Angeles, State of California on Sept 16<sup>th</sup> 1896, in the matter of the Estate of Brigido Botiller deceased. (No. 872 New Probate) prepared under instructions from Tadeo A. Botiller, J.H. Doehrwiler and Peter Haack Commissioners in Partition, made by Win. Simkins, District Surveyor in November 1896. Scale 30 feet to 1 inch.



*J.H. Doehrwiler*  
 Tadeo A. Botiller  
 Commissioners in Partition

New Probate Court Case # 872  
 Estate of Brigido Botiller-Deed.  
 Filed Dec. 12-1896 Exhibit B



*Santee Street*

C.F. 358

