

L.S. 4-45-COPY OF THIS MAP

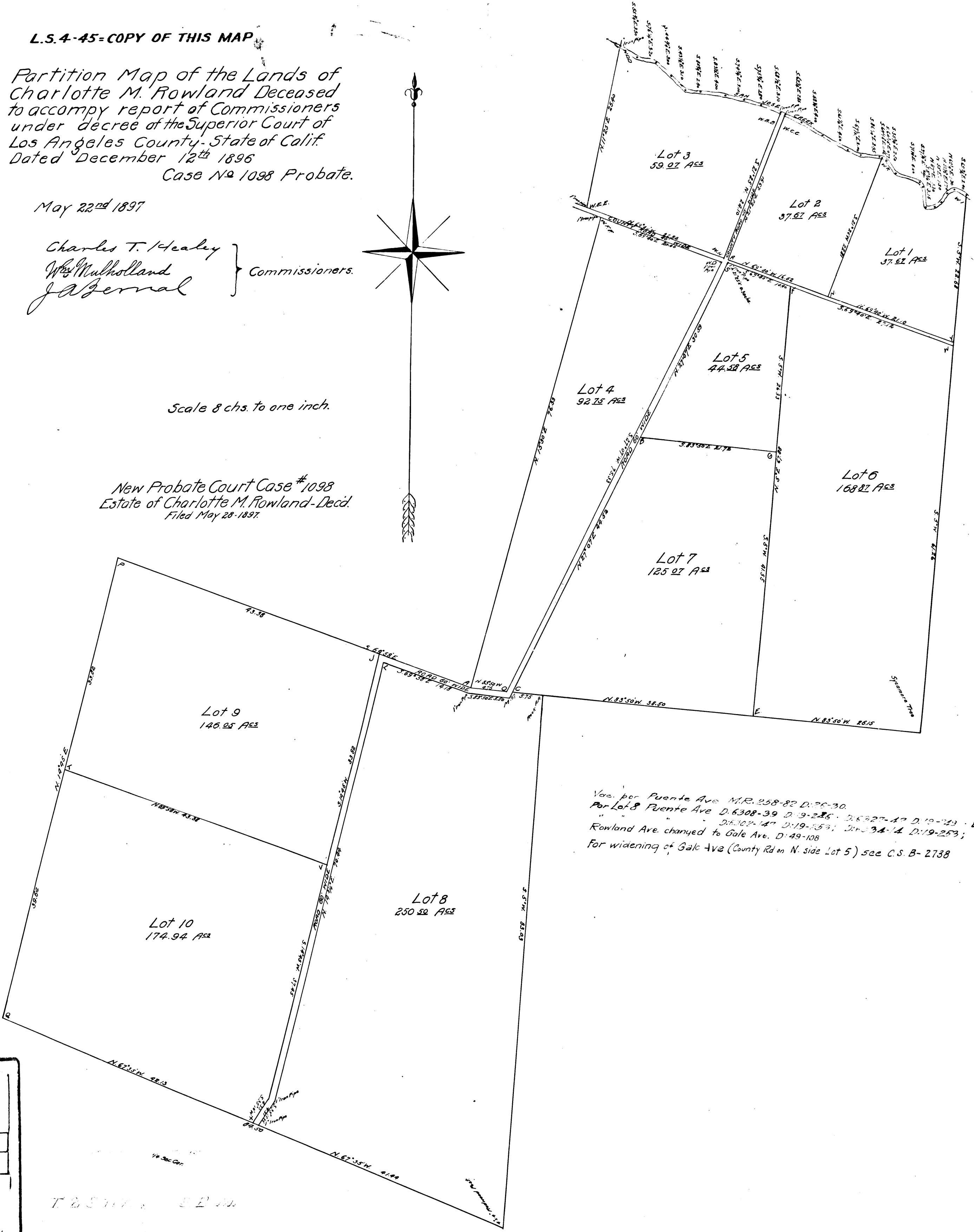
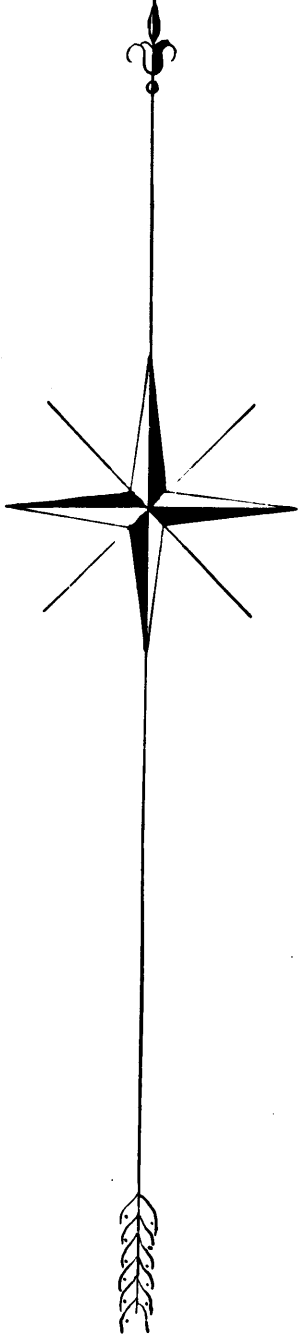
Partition Map of the Lands of
Charlotte M. Rowland Deceased
to accopy report of Commissioners
under decree of the Superior Court of
Los Angeles County - State of Calif.
Dated December 12th 1896
Case No 1098 Probate.

May 22nd 1897

Charles T. Healey }
Wm Mulholland } Commissioners.
J. Bernal }

Scale 8 chs. to one inch.

New Probate Court Case # 1098
Estate of Charlotte M. Rowland - Decd.
Filed May 20 - 1897



Var. per Puente Ave M.R. 258-82 D: 75-30.
For Lot 8 Puente Ave D: 6308-39 D: 9-286; D: 6527-47 D: 19-224; D: 6331-35 D: 9-240
D: 6302-147 D: 19-253; D: 34-14 D: 19-253;
Rowland Ave. changed to Gale Ave. D: 49-108
For widening of Gale Ave (County Rd on N. side Lot 5) see C.S. B- 2738

C.F. 359

T. B. S. W. E. W. W.