

VEMCO PASADENA, CAL.

S. C. C. No. 39716

A. B. Downe

vs

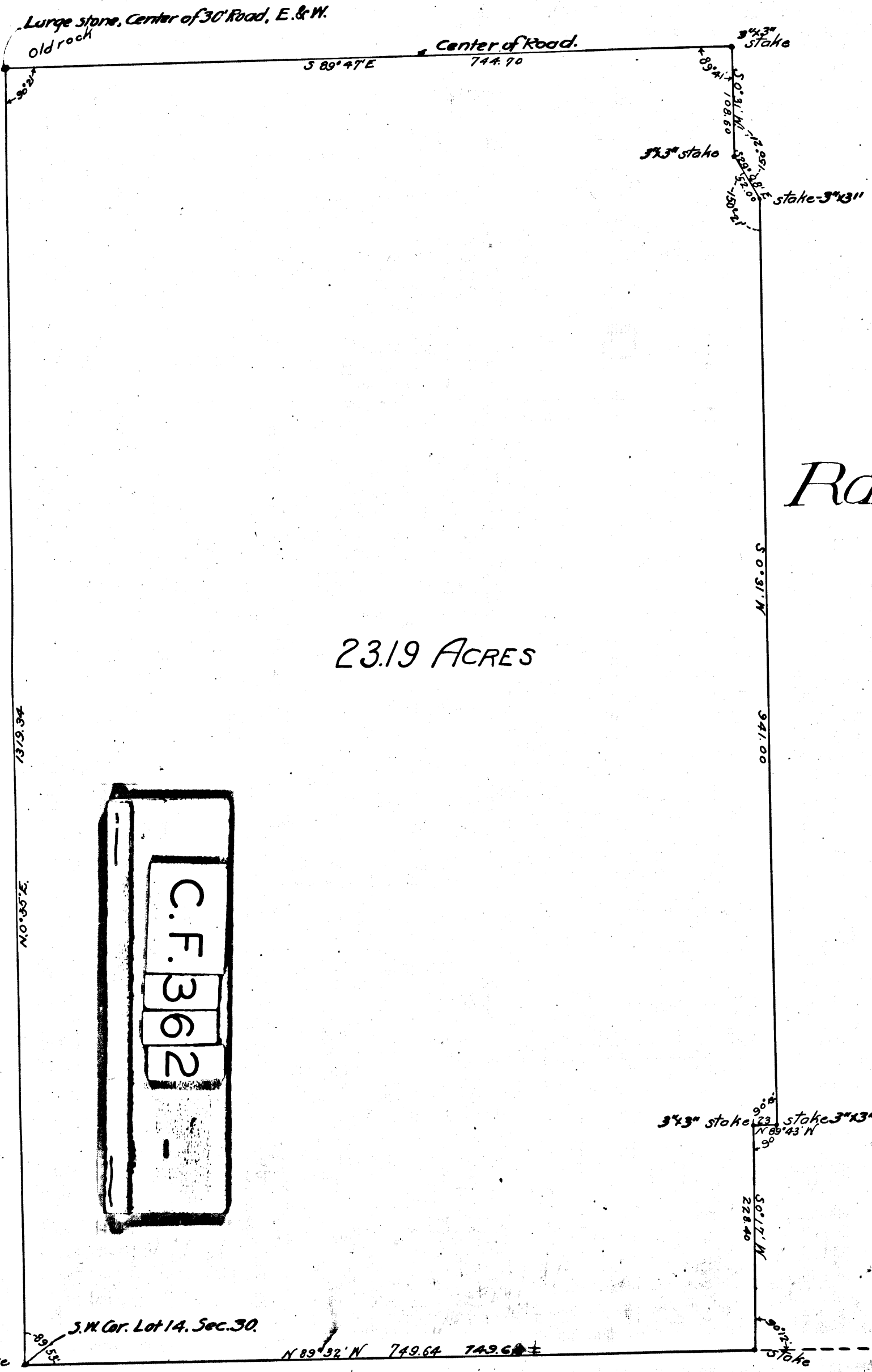
J. W. Helsley

Quiet Title

Note - Found for Plaintiff

Judgment Dec. 10-1902.
Book 107-238.

Note: Figures in brown are from Judgt. Co. sur.



23.19 ACRES

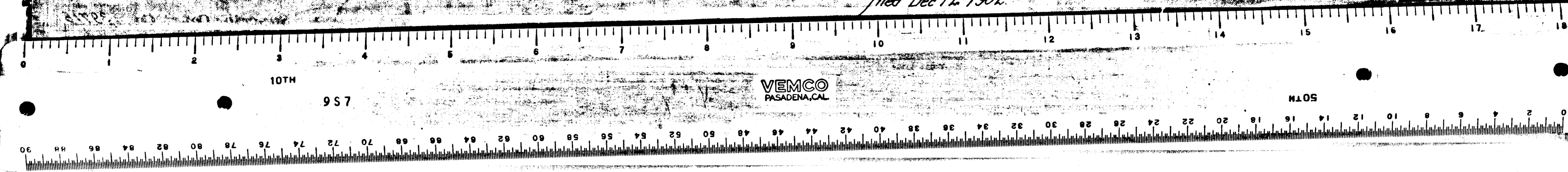
MAP
 of a portion of
 Section 30, T. 1 N. R. 10 W. S. B. M.
 Rancho Azusa de Duarte
 Los Angeles County California
 as located by E. T. Wright
 July 1902. Scale 100ft = 1 in



M.R. 6-80

Sec. 30.
 Rock
 1/4 Sec Cor
 Sec. 31.

Filed Dec 12, 1902.



VEMCO PASADENA, CAL.