

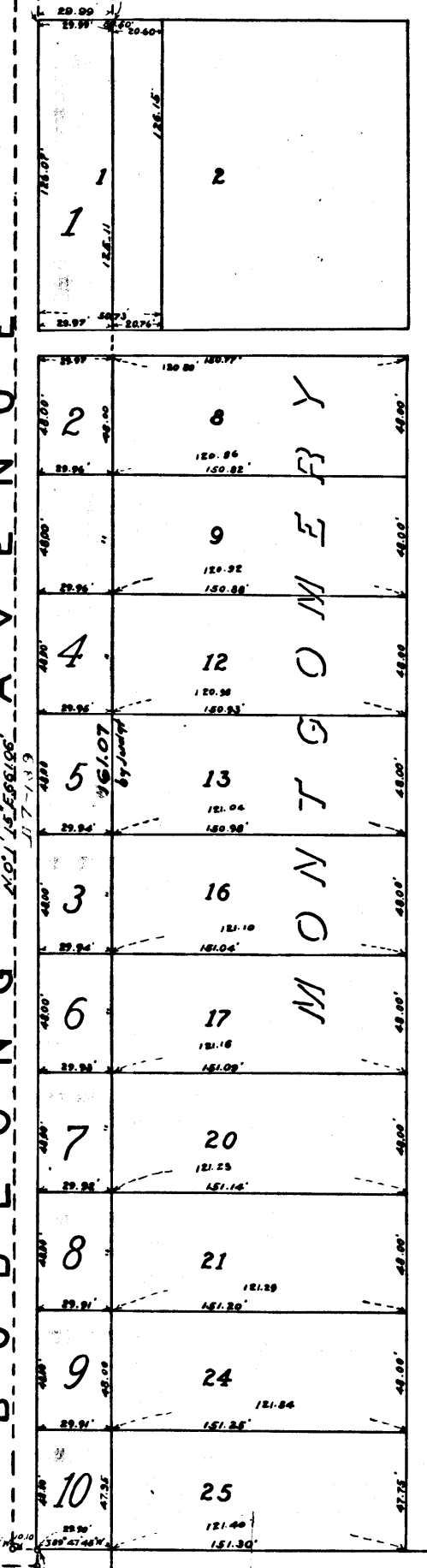
A D A M S S T R E E T

B U D L O N G A V E N U E

J U L I E T S T R E E T

27TH S T R E E T

Center Line 27TH S T R E E T



S.C.C. No. 39797
 Los Angeles City
 vs
 I. F. Finigan et al.
 Note: Found for the plaintiff's
 condemnation.
 Final Judgment Mar. 9, 1904, as per this map.
 Book 118-293.

J S A C T
 Miscellaneous Records Book 23, Page 2

M A P
 SHOWING LAND SOUGHT TO BE CONDEMNED FOR THE OPENING AND
 WIDENING OF
 BUDLONG AVENUE
 FROM
 ADAMS STREET TO TWENTY-SEVENTH STREET
 IN THE CITY OF LOS ANGELES CAL.

In accordance with Ordinance No. 7441 (New Series)

Scale, 1 inch = 50 feet

AUGUST 1902

Note: Red Tint shows land sought
 to be condemned

HARRY F. STAFFORD
 City Engineer

C.F. 363 -

Filed June 10, 1903

