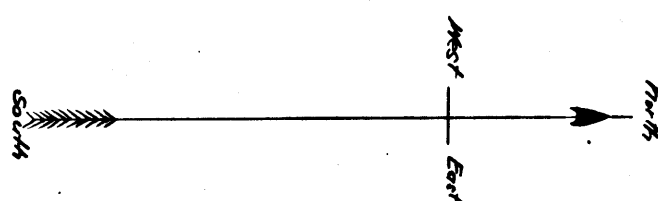


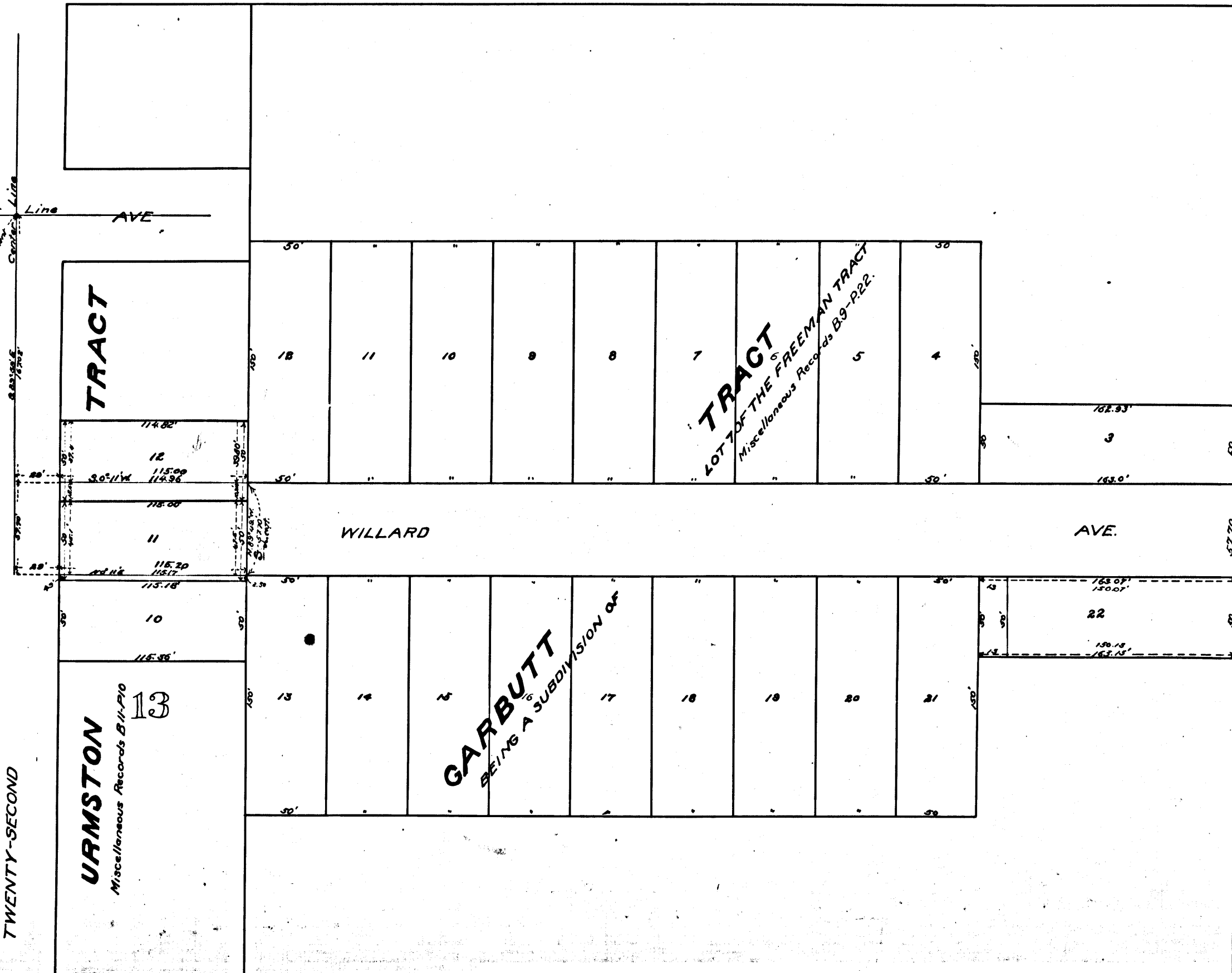
WILLARD AVENUE  
FROM  
20<sup>TH</sup> STREET TO 22<sup>ND</sup> STREET.  
SCALE 50 FT. TO 1 INCH

The City of Los Angeles  
vs.  
Lena Mottaz, et al.  
Final Judgment for Plaintiff, Oct. 7, 1903.  
Case Filed Oct. 31, 1902. Book 16-104.  
Note: Street names are from Judge's map.



ST. NEW ENGLAND ST.

MAGNOLIA Center Line AVE



C.F. 364

TWENTY-SECOND

TWENTIETH

MIRANDA ST.

