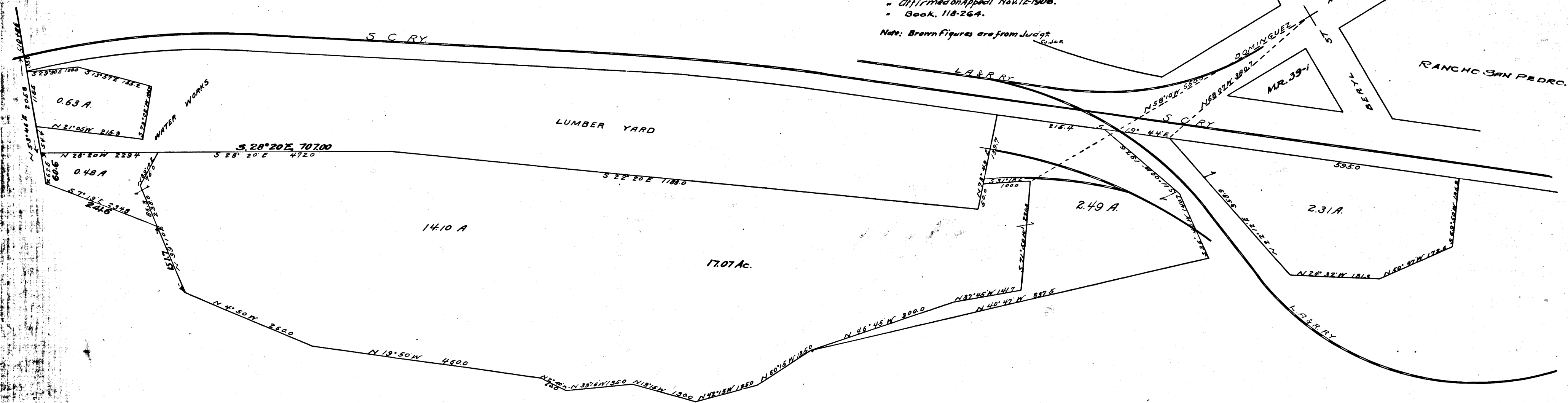


PLAT OF A PORTION OF THE
SALT WORKS TRACT
REDONDO LOS ANGELES CO. CAL.
COURSES MAGNETIC - SCALE 1 INCH = 100 FEET

S.C.C. No. 42216.
L.A. & Redondo Ry. Co. vs. Redondo Improvement Co.
vs. Company
New Liverpool Salt Works.
To Reform Deed.
Note Found for Plaintiff.
Judgment, Mar. 19 - 1904.
" Affirmed on Appeal Nov. 12 - 1906.
" Book, 118-264.

Note: Brown figures are from Judgment.



Filed Mar. 21, 1904.

C.F. 373

