

MAP

Showing land sought to be Condemned
for the opening of a thirty foot Street

From **Second Street** to **Third Street**
between

Hope Street and Flower Street

in the

City of Los Angeles

to be known as

Cinnabar Street

In accordance with Ordinance No 8301 (New Series)

Harry F. Stafford

City Engineer Aug 1903

Note: Portion colored red shows land sought to be Condemned. Herein the mark 'f' means feet. Dimensions next to property lines show each the length of said line in feet. Dotted lines and figures relating to them show property lines & dimensions in those cases where actual holdings differ from the recorded subdivisions. Other figures show the numbers of the lots.

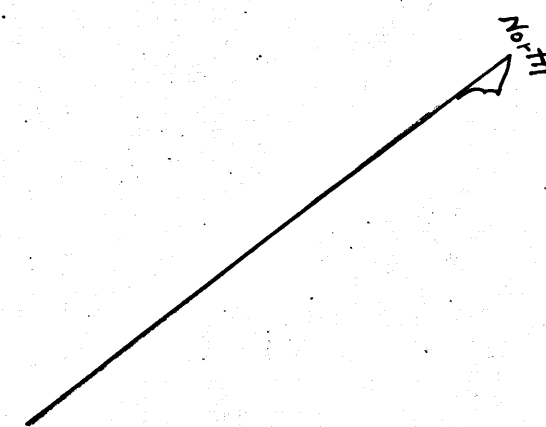
See 112385-264 117-199

SCALE 60 FEET TO ONE INCH.

MAP Approved Aug. 26th 1903

Harry F. Stafford

City Engineer



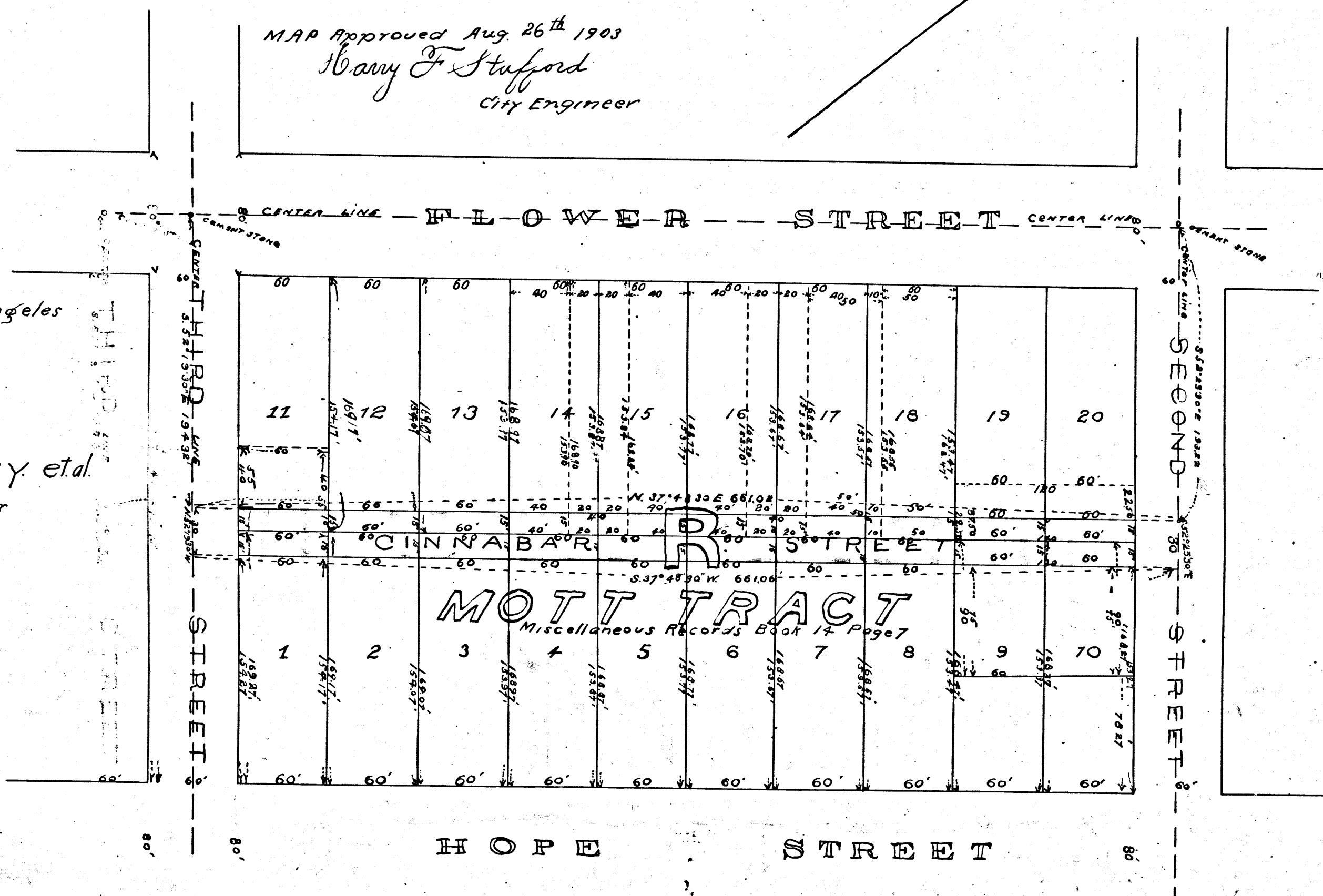
Ex. C.

The City of Los Angeles

vs

W.A. Henry et al.

Found For Plaintiff



42311

C.F. 375

A. 2214

