

NADEAU VINEYARD TRACT No. 1

Misc Rec Book 28 - p 81

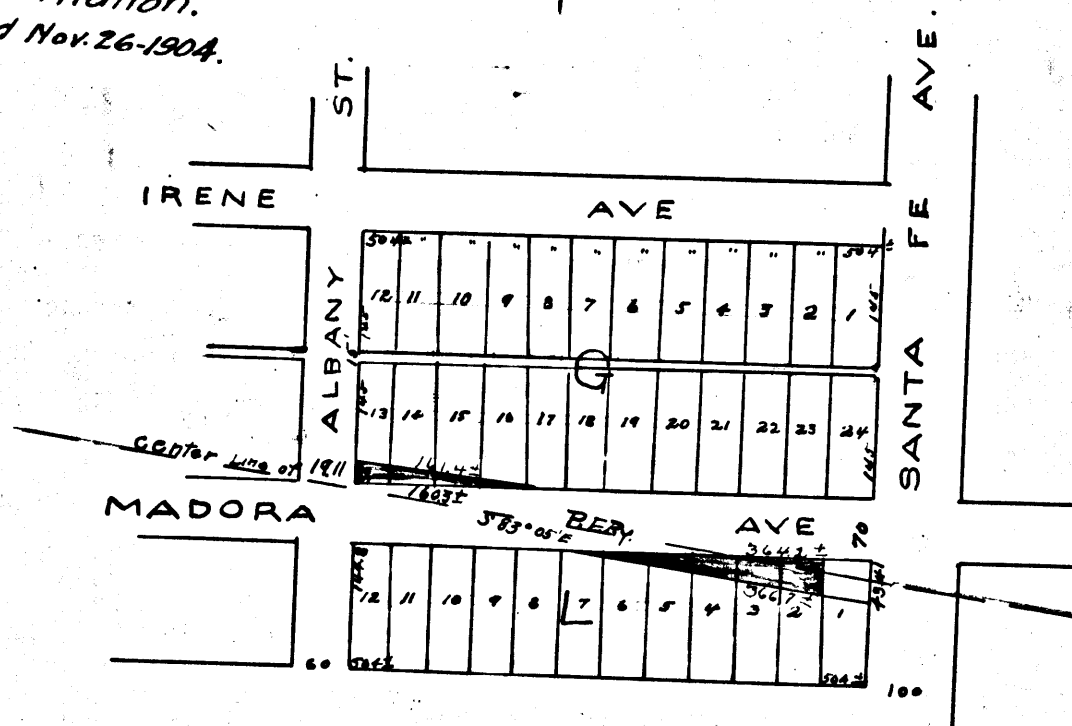
E. A.

Pacific Elec. Ry. Co.
vs.

L.T. Barry et al.

Condemnation.
Dismissed Nov. 26-1904.

N



C.F. 377

Land sought for Right of Way shown colored Red

Scale 200 to One Inch

2513