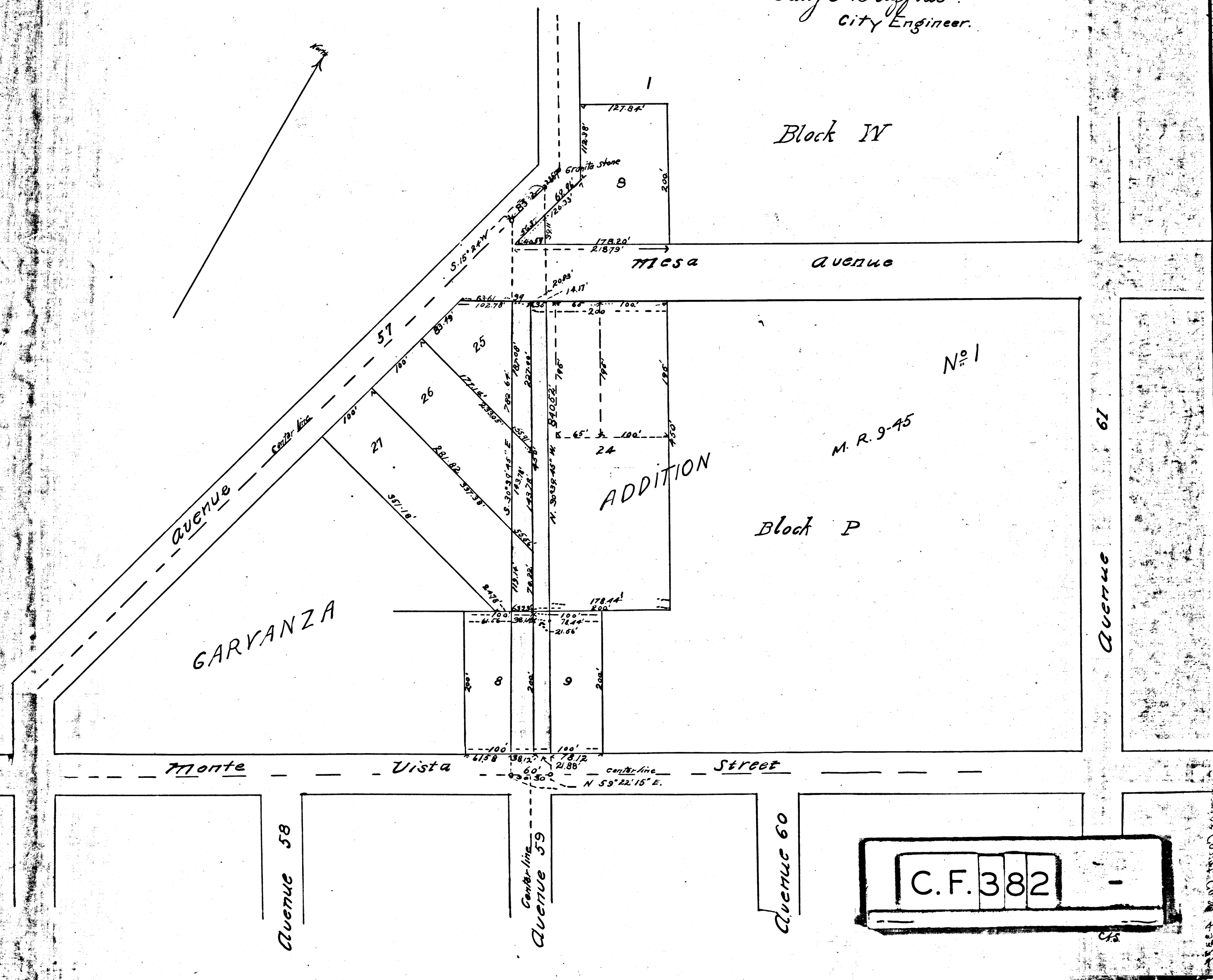
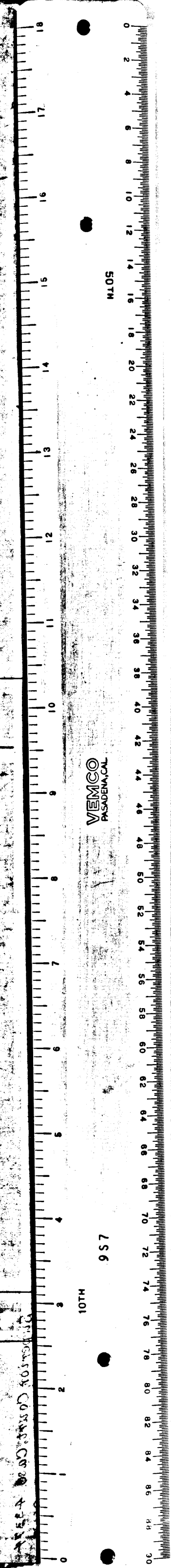


**MAP**  
 Showing Land Sought to be Condemned for the opening  
 OF  
**AVENUE FIFTY-NINE**  
 between  
 Monte Vista Street and Avenue Fifty Seven  
 in the  
**CITY OF LOS ANGELES**  
 Under Ordinance No. 8509 (New Series)  
 Scale: 1 inch = 100 feet  
 Harry F. Stafford - City Engineer    Dec 1903.

City of Los Angeles  
 vs  
 No. 43374  
 Sarah Webb et al.  
 Filed Jan 9<sup>th</sup> 1904  
 Dismissed Dec. 15-1906

Note: Portion colored red indicates  
 land to be condemned

Map approved Dec 30<sup>th</sup> 1903  
 Harry F. Stafford  
 City Engineer.



MEMCO  
 PASADENA CAL.

MEMCO  
 PASADENA CAL.

C.F. 382