

# Map

SHOWING LAND SOUGHT TO BE CONDEMNED FOR THE OPENING OF  
**AN ALLEY**  
 IN THE BLOCK BOUNDED BY  
**EIGHTH STREET, NINTH STREET, HOPE STREET AND FLOWER STREET**  
 IN THE  
**CITY OF LOS ANGELES, CAL.**  
 UNDER ORDINANCE No 8615 (NEW SERIES)

CITY OF LOS ANGELES.  
 vs.  
 H. A. GETZ ET AL.

FILED APRIL 12<sup>TH</sup> 1905.

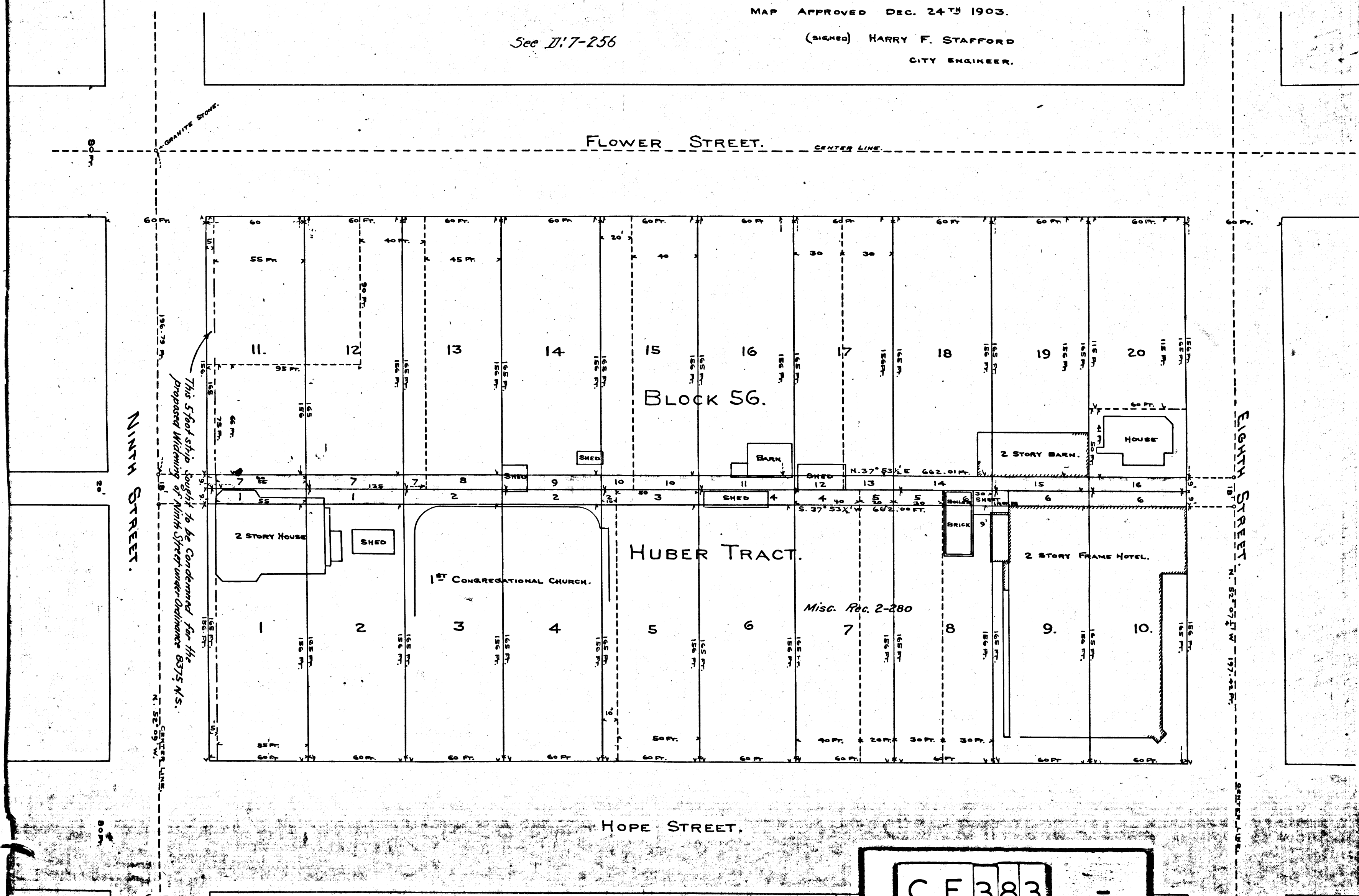
SCALE: ONE INCH TO 40 FT.  
 HARRY F. STAFFORD - CITY ENGINEER - DEC 1903.

NOTE: PORTION COLORED RED INDICATES LAND TO BE CONDEMNED

MAP APPROVED DEC. 24<sup>TH</sup> 1903.

(SIGNED) HARRY F. STAFFORD  
 CITY ENGINEER.

See II:7-256



C.F. 383