

CITY OF LOS ANGELES.
 VS.
 JULIUS GOLDWATER
 ET AL.
 Condemnation.
 Int. Judgt. for Plff. Feb. 26, 1906, J. 143
 Dismissed, Nov. 3, 1909, J. 152 & 153
 FILED MARCH 14TH 1904.

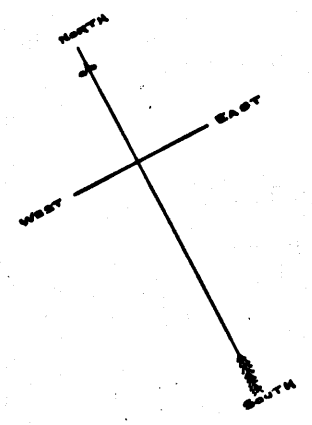
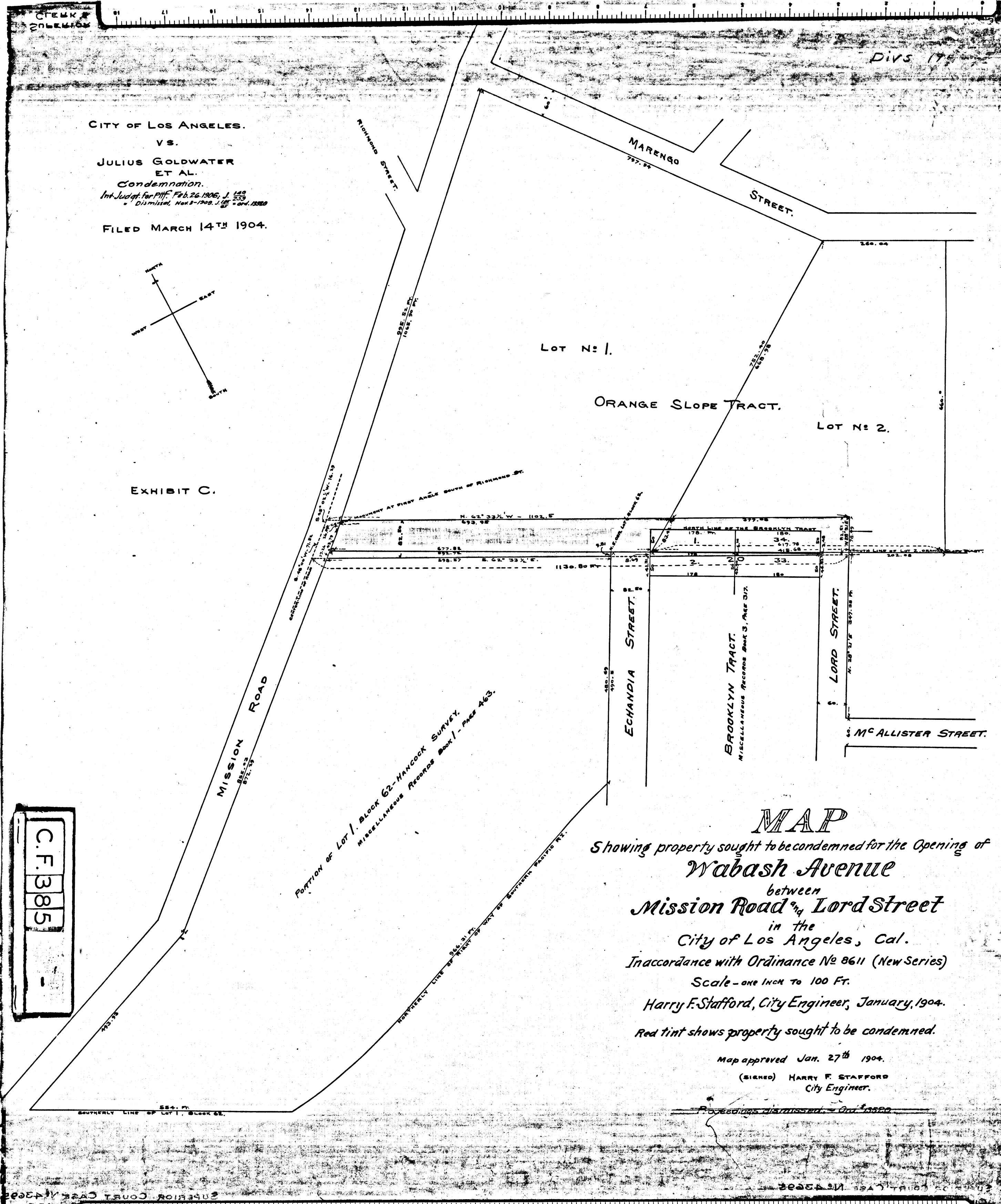


EXHIBIT C.

DIVISION 17



C.F. 385

MAP
 Showing property sought to be condemned for the Opening of
Wabash Avenue
 between
Mission Road and Lord Street
 in the
 City of Los Angeles, Cal.
 In accordance with Ordinance No 8611 (New Series)
 Scale - one inch to 100 Ft.
 Harry F. Stafford, City Engineer, January, 1904.
 Red tint shows property sought to be condemned.

Map approved Jan. 27th 1904.
 (Signed) HARRY F. STAFFORD
 City Engineer.

~~Proceedings dismissed - Oct. 2, 1904~~

