

MAP

Showing property sought to be condemned for the Opening of
Thirty second Street
between
Maple Avenue and Trinity Street,
in the
City of Los Angeles, Cal.

H.S. - 2

In accordance with Ordinance No. 8830 (New Series)

Scale 100 feet to 1 inch.

City of Los Angeles
vs
So. Pac. R.R. Co.

Harry F. Stafford, City Engineer, February, 1904

Red tint shows property sought to be condemned

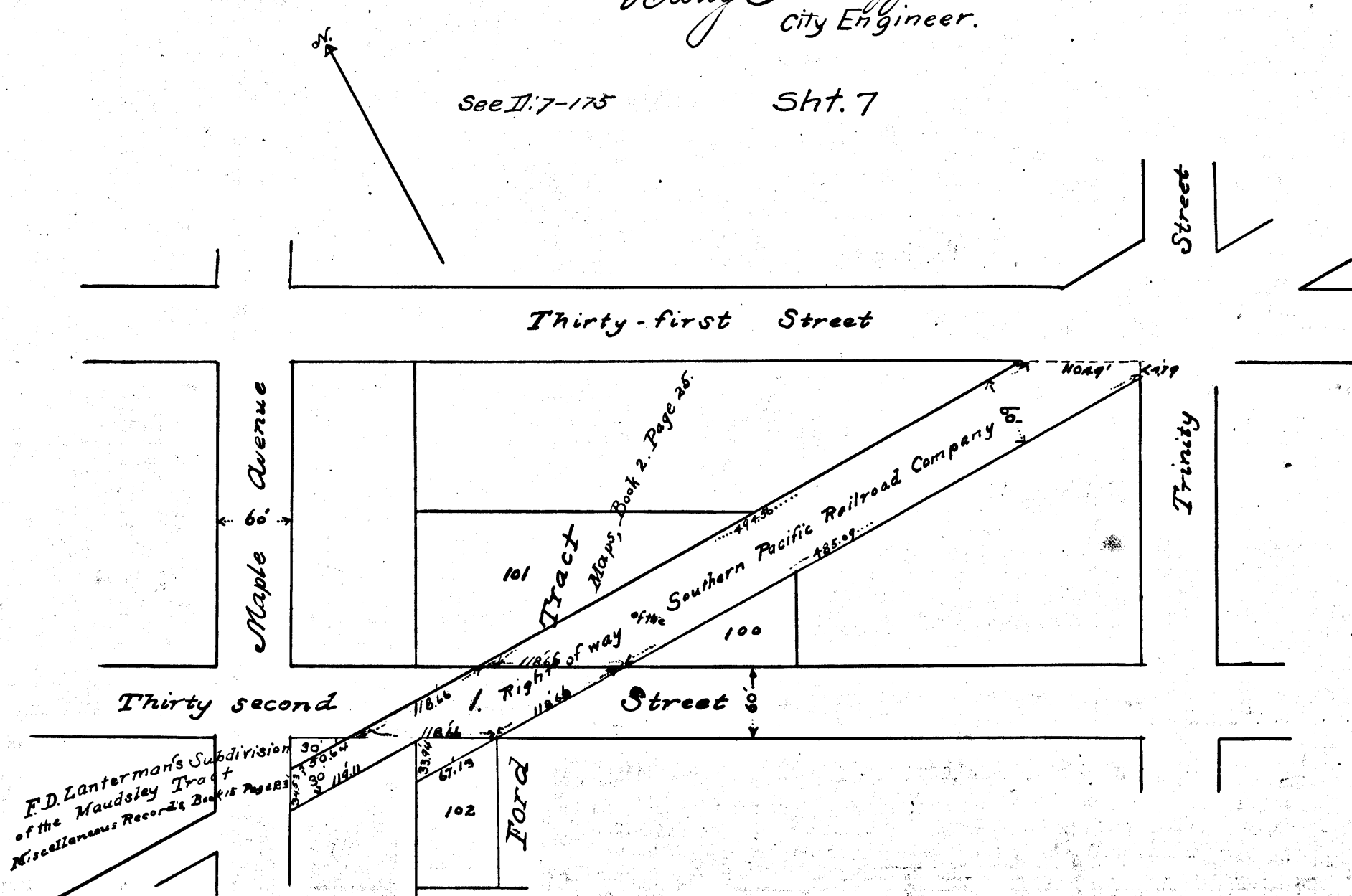
Found for Plaintiff Filed Oct 25-04

Map approved Feb 11th 1904
Harry F. Stafford
City Engineer.

See II:7-175

Sht. 7

C.F. 386



43771

A47