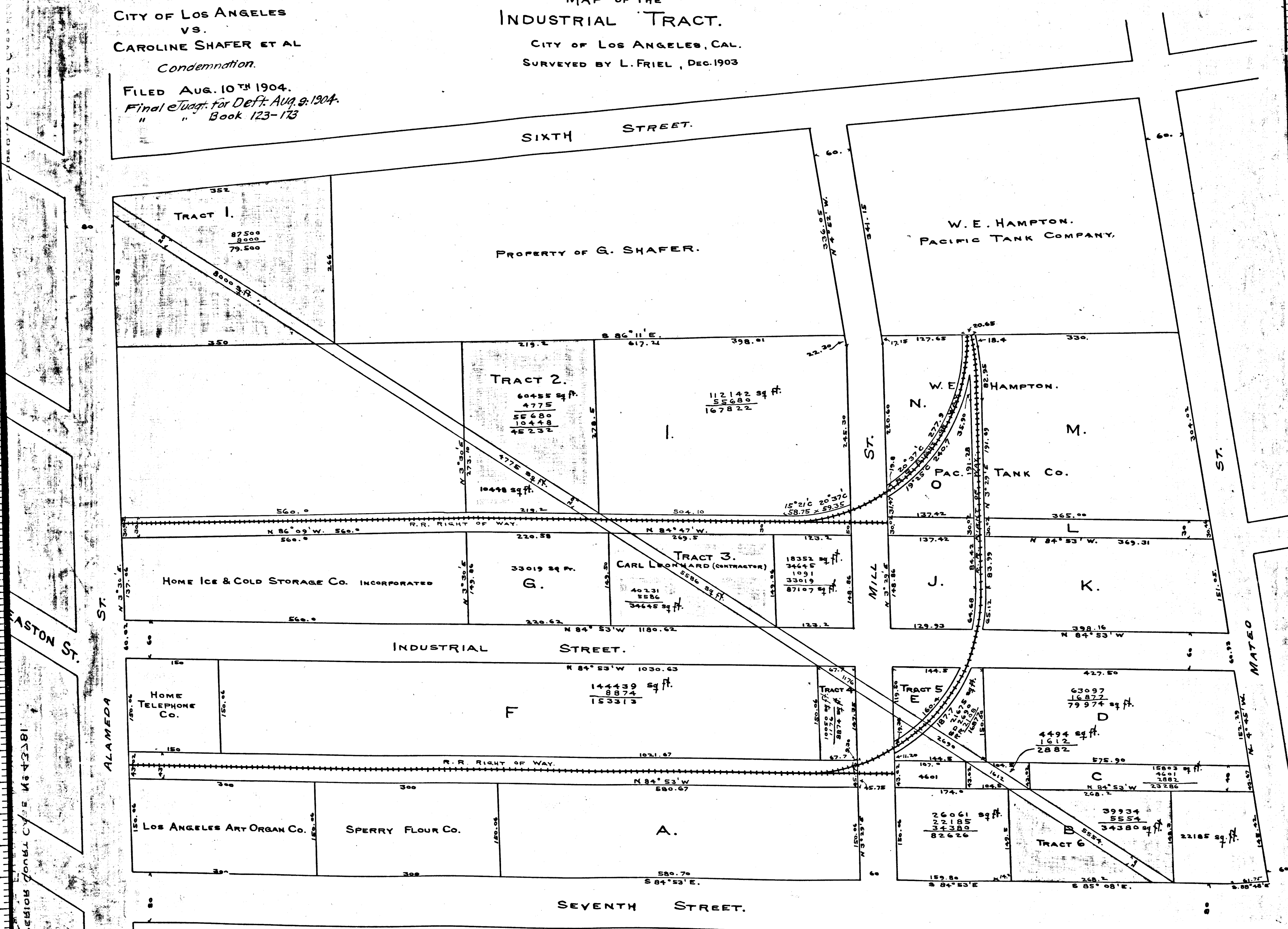


Div 23

CITY OF LOS ANGELES
VS.
CAROLINE SHAFER ET AL
Condemnation.

MAP OF THE
INDUSTRIAL TRACT.
CITY OF LOS ANGELES, CAL.
SURVEYED BY L. FRIEL, DEC. 1903

FILED AUG. 10TH 1904.
Final Order for Def't: Aug. 9, 1904.
" " Book 123-173



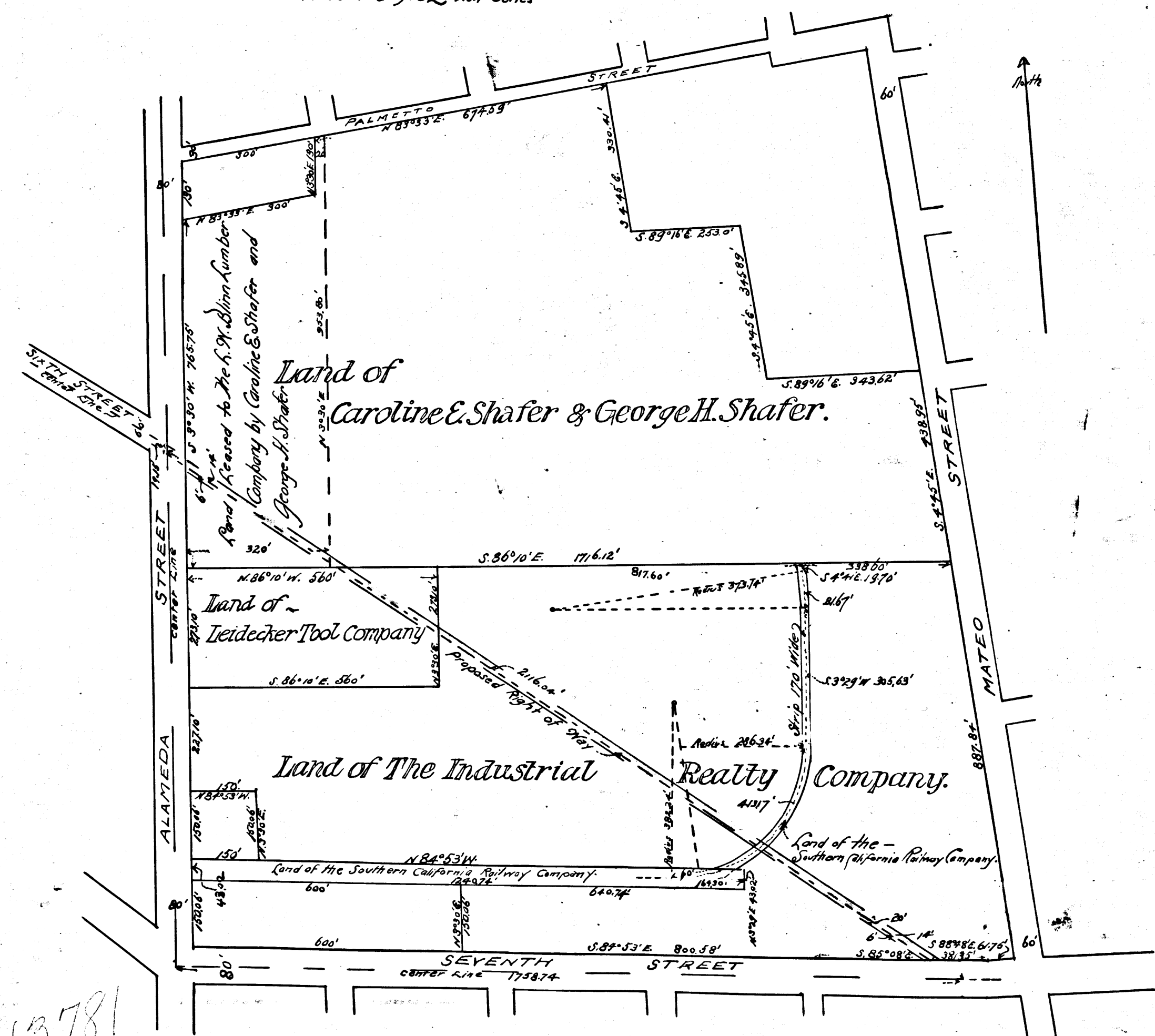
C.F. 388

City of Los Angeles
 vs
 Caroline Shafer et al
 Found for Plaintiff Filed Aug 5 1904
 City of Los Angeles, California.

Condemnation.
 Final Judgt. - For Def't. Aug. 9-1904.
 " " Book 123-173.

Map -
 Showing Land sought to be Condemned for
 Right of Way of a Storm Sewer, in the
 City of Los Angeles, California.
 Scale 200 feet to 1 inch.
 Harry F. Stafford, City Engineer Feb. 1904.
 Portion colored red shows land sought to be Condemned.
 In Accordance with Ordinance No. 962 New Series

Map Approved Feb 16th 1904
 Harry F. Stafford
 City Engineer -



43781

C.F. 388

