

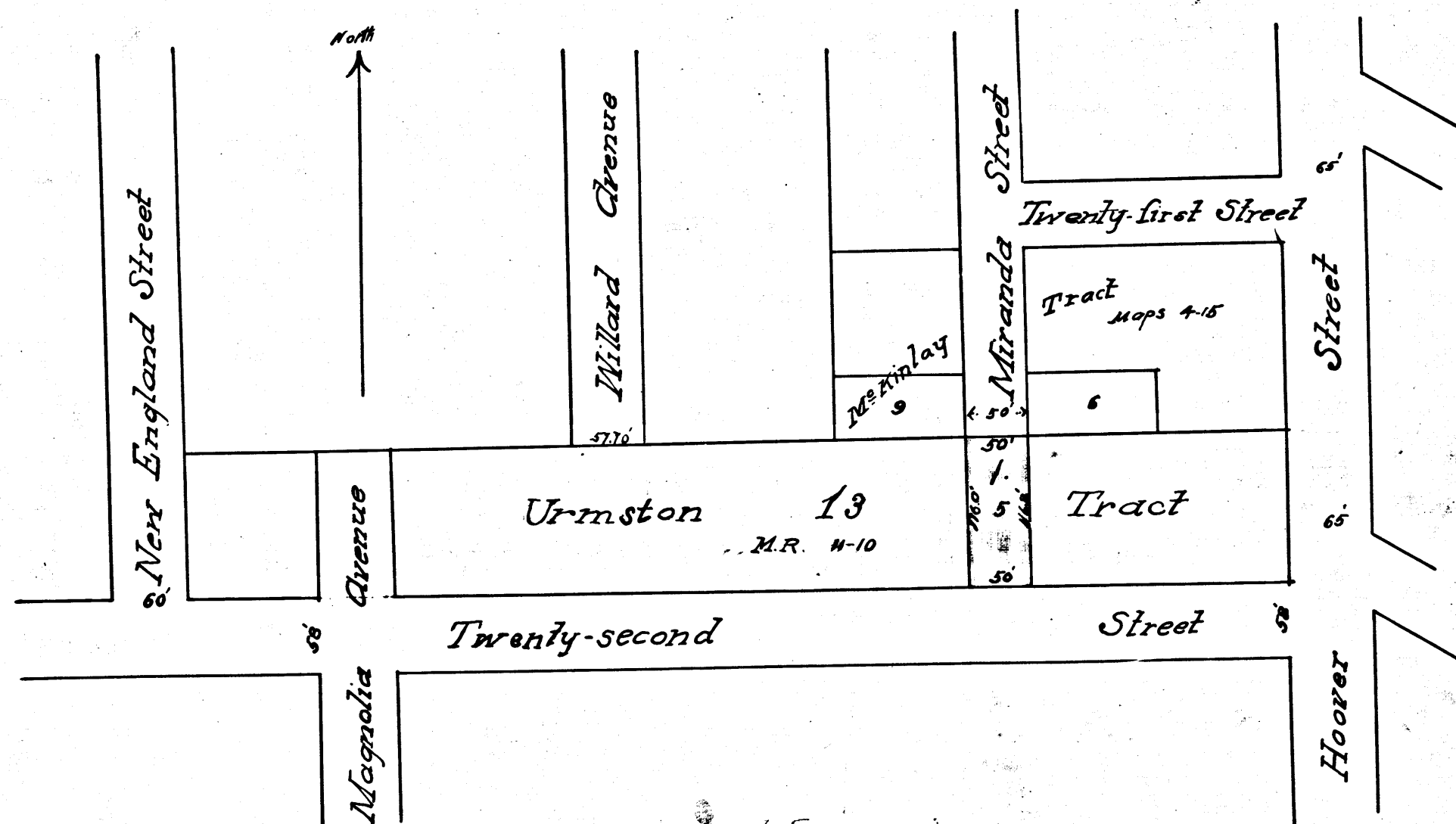
MAP
 Showing Land sought to be Condemned for the Opening
 OF
MIRANDA STREET
 FROM
 its present southerly terminus
 TO
 Twenty second Street
 IN THE
CITY OF LOS ANGELES CAL.
 Under Ordinance No 9159 (New Series)
 Scale 1 inch = 100 feet
 Harry F. Stafford City Engineer Mar 1904.
 II 7-239

City of Los Angeles
 VS
 S. Ford et al.
 Found for Plaintiff

Filed Nov 7 1904

Note: portion colored red indicates land to be condemned

Map Approved April 2nd 1904
 Harry F. Stafford
 City Engineer



4-15
 24-5

C.F. 389