

Plat 16 + 17

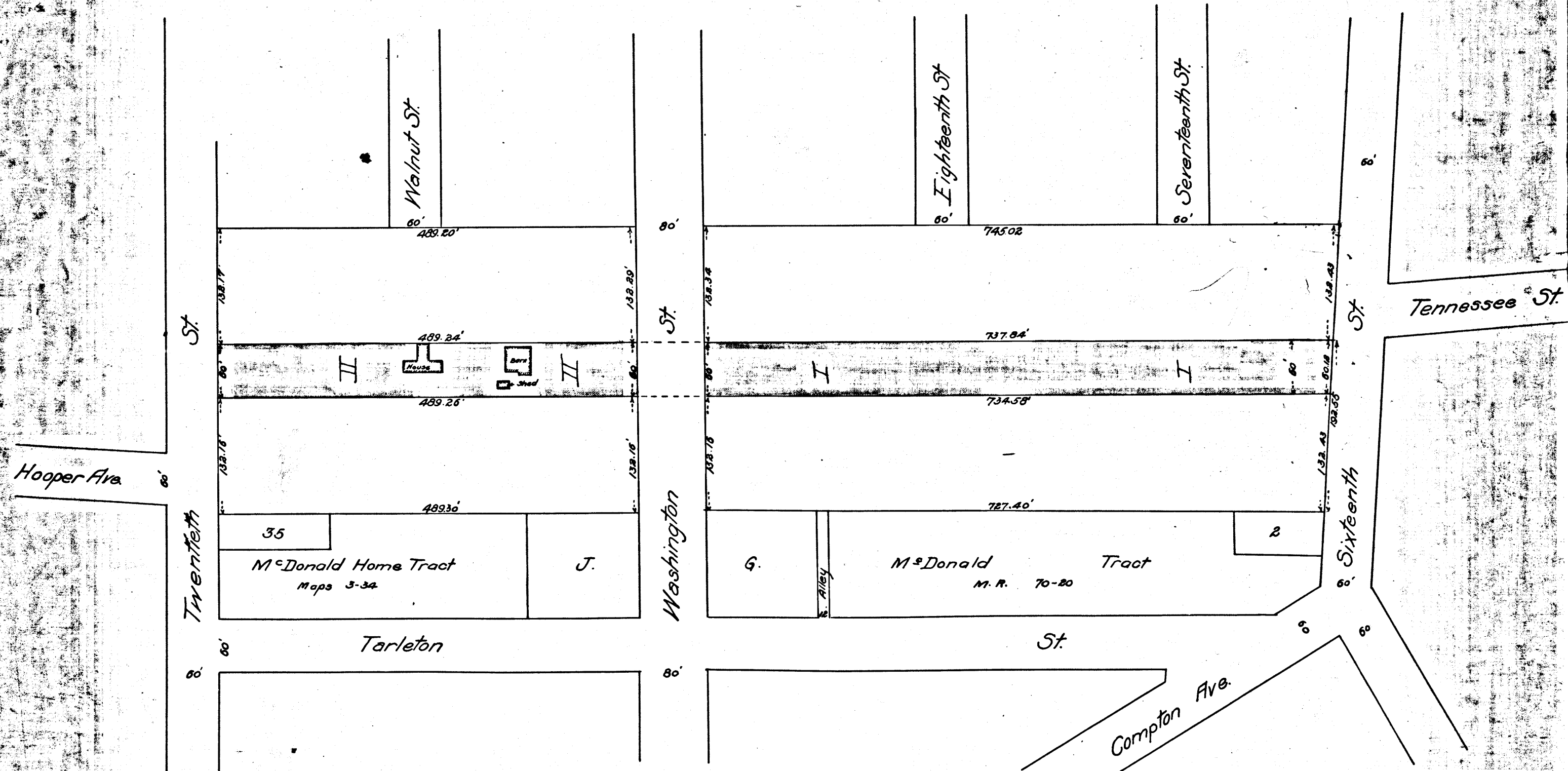
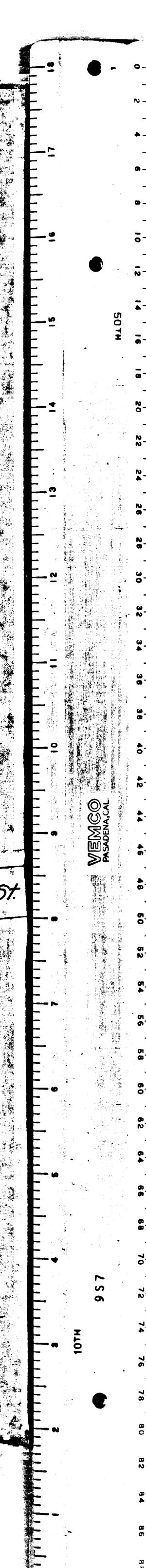
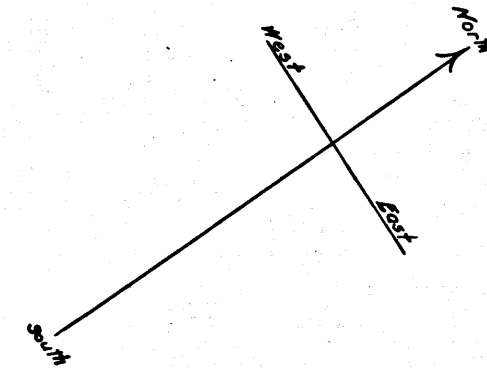
MAP
Showing Land sought to be Condemned for the Opening
OF
TENNESSEE STREET
BETWEEN
Sixteenth Street and Twentieth Street

Under Ordinance N^o 9006 (7.5)
Scale: 1 inch = 100 feet

Note: Portion colored red indicates land to be condemned.

City of Los Angeles
vs
M. E. Moore et al
Found for Plaintiff

See II:7-174



Filed Aug 22-1904

C.F. 394