

MAP
 showing land sought to be condemned for the widening
 of
JEFFERSON STREET
 between
 San Pedro Street and Central Avenue
 in the
 City of Los Angeles, Cal.

Under Ordinance No 8521 (New Series)
 Scale 1/4" = 100'

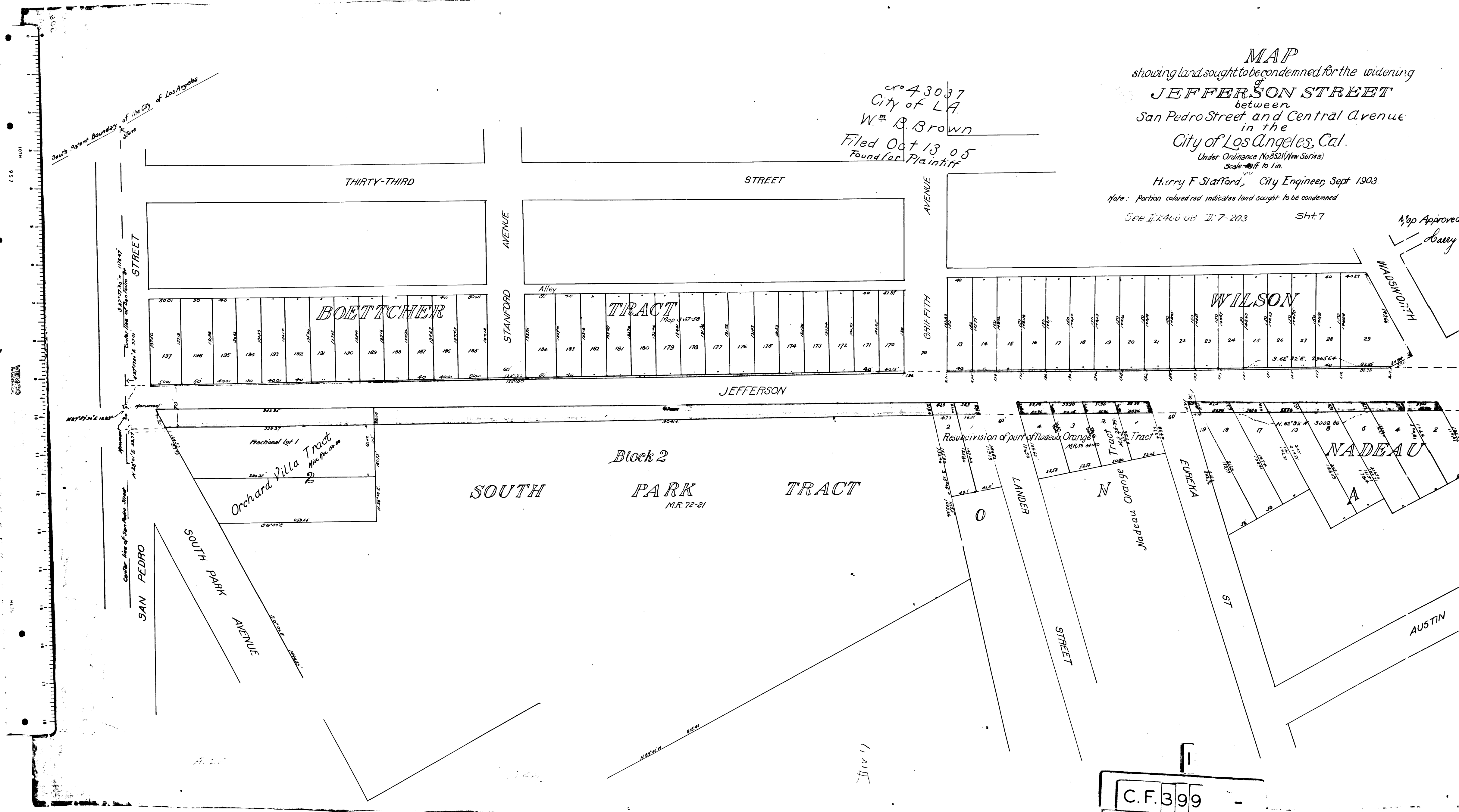
Hurry F. Stafford, City Engineer, Sept 1903.

Note: Portion colored red indicates land sought to be condemned

See II: 240-08 II: 7-203 Sht. 7

Map Approved
 Harry

ex 43087
 City of L.A.
 W. B. Brown
 Filed Oct 13 05
 Found for Plaintiff



C.F. 399

no 43087
City of L.A.
W. B. Brown
Filed Oct 13 05
Found for Plaintiff

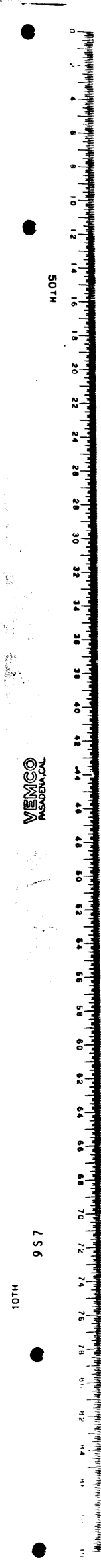
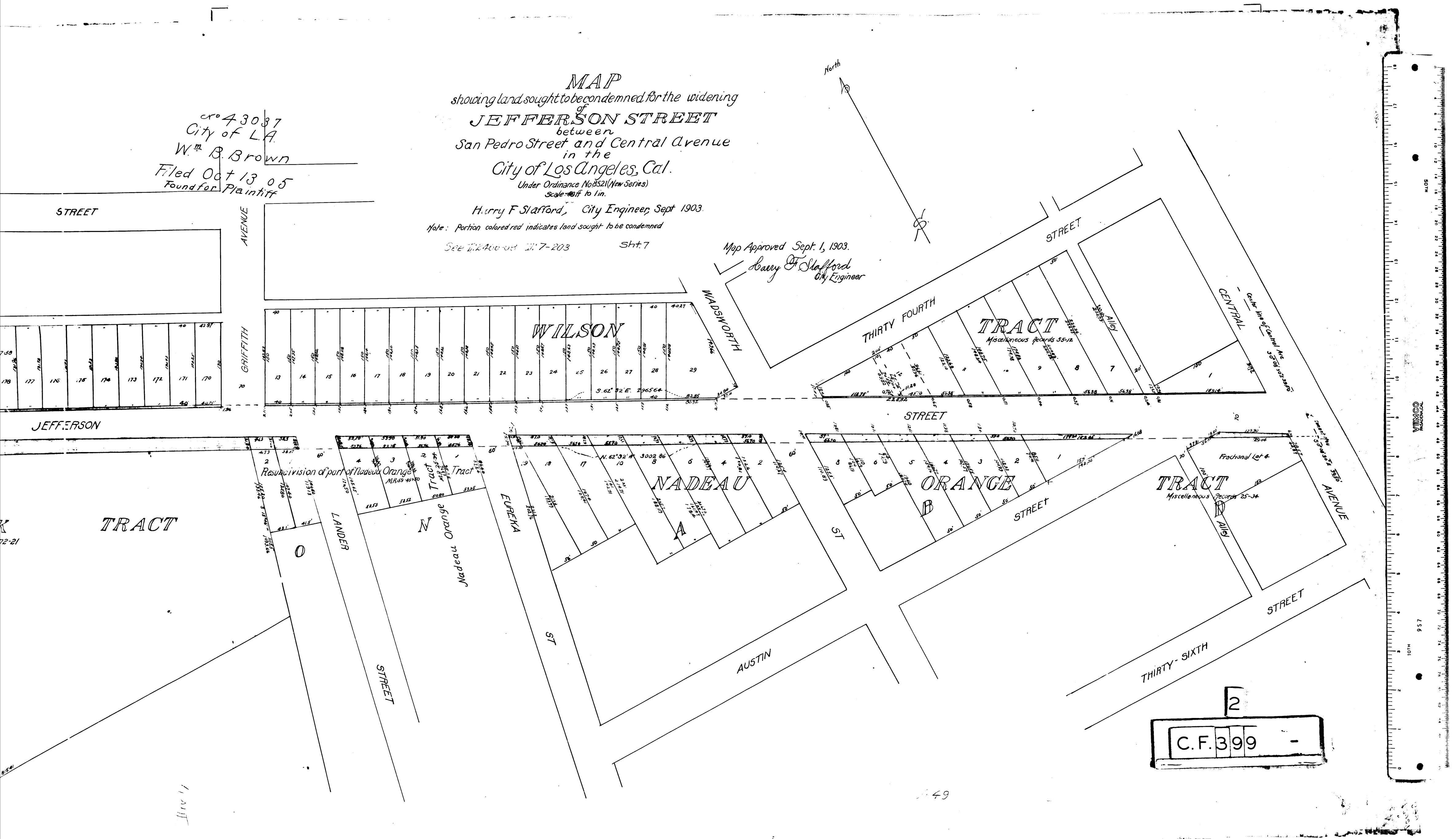
MAP
showing land sought to be condemned for the widening
of
JEFFERSON STREET
between
San Pedro Street and Central Avenue
in the
City of Los Angeles, Cal.
Under Ordinance No. 8521 (New Series)
Scale 40 ft to 1 in.

Harry F. Stafford, City Engineer, Sept. 1903.

Note: Portion colored red indicates land sought to be condemned

See MAPS 400-001 317-203 Sht. 7

Map Approved Sept. 1, 1903.
Harry F. Stafford
City Engineer



VENCO
REPRODUCED

1074 957

2
C.F. 399

49