

MAP
 SHOWING LAND
 SOUGHT TO BE CONDEMNED
 FOR THE WIDENING OF
SIXTEENTH STREET
 BETWEEN
FIGUEROA STREET AND PACIFIC AVENUE

IN THE
CITY OF LOS ANGELES
 In accordance with Ordinance No. 13616 (New Series)
 Scale: 1 inch equals 100 feet. March, 1907.
 Homer Hamlin, City Engineer.
 Final Judgment. Aug. 25-1910.
 For Plaintiff. D: 16-17.

Note: Red tint shows land sought to be condemned.

C.F. 501 -

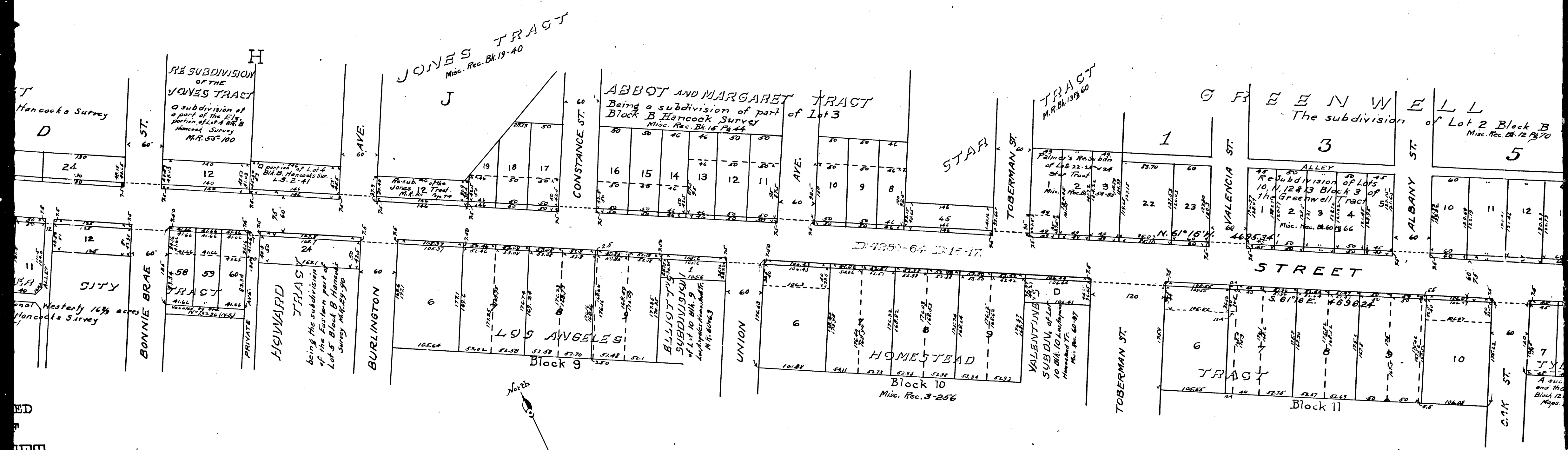
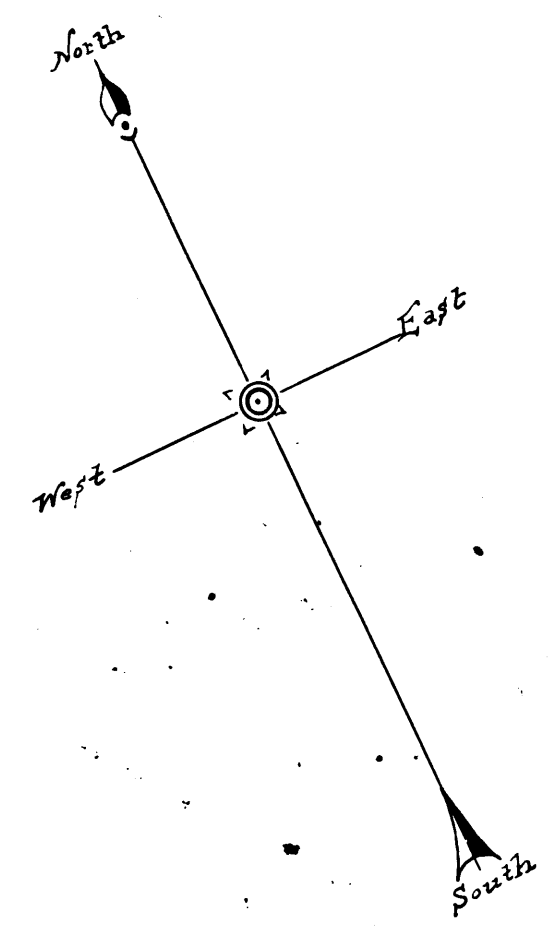
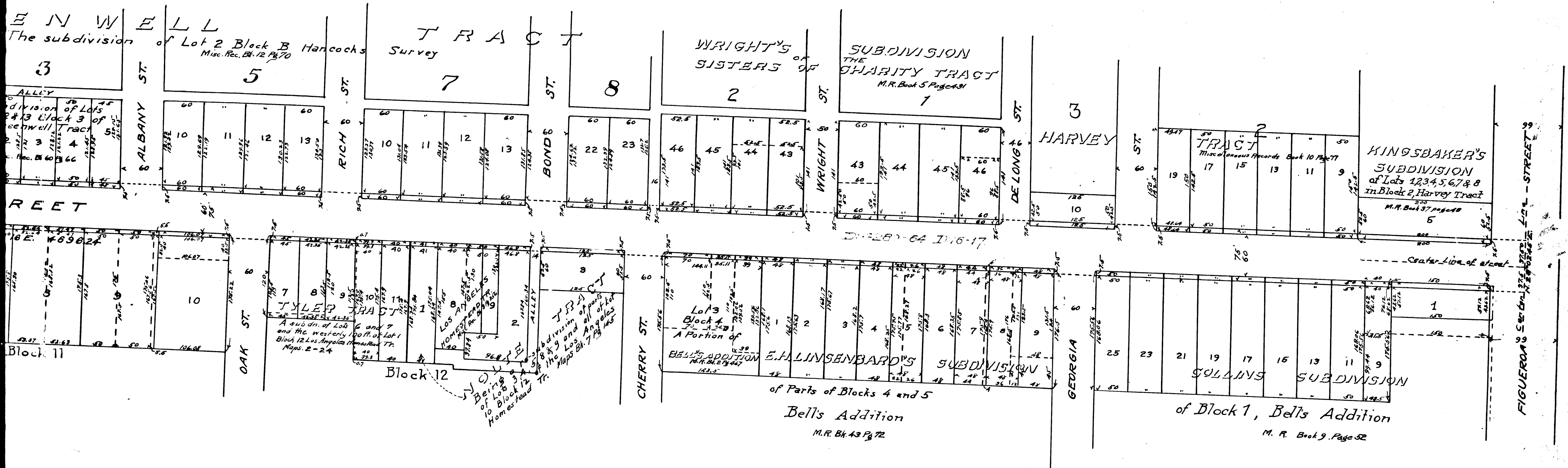


EXHIBIT C
 FILED APRIL 26, 1907
 SUP. CT. N^o 56379
 CITY OF LOS ANGELES
 vs.
 REES ET AL



PACIFIC AVENUE
 LES
 13616 (New Series)
 March, 1907.
 y Engineer.
 25-1910.
 16-17.

2
 C.F. 501



3

C.F. 501 -

