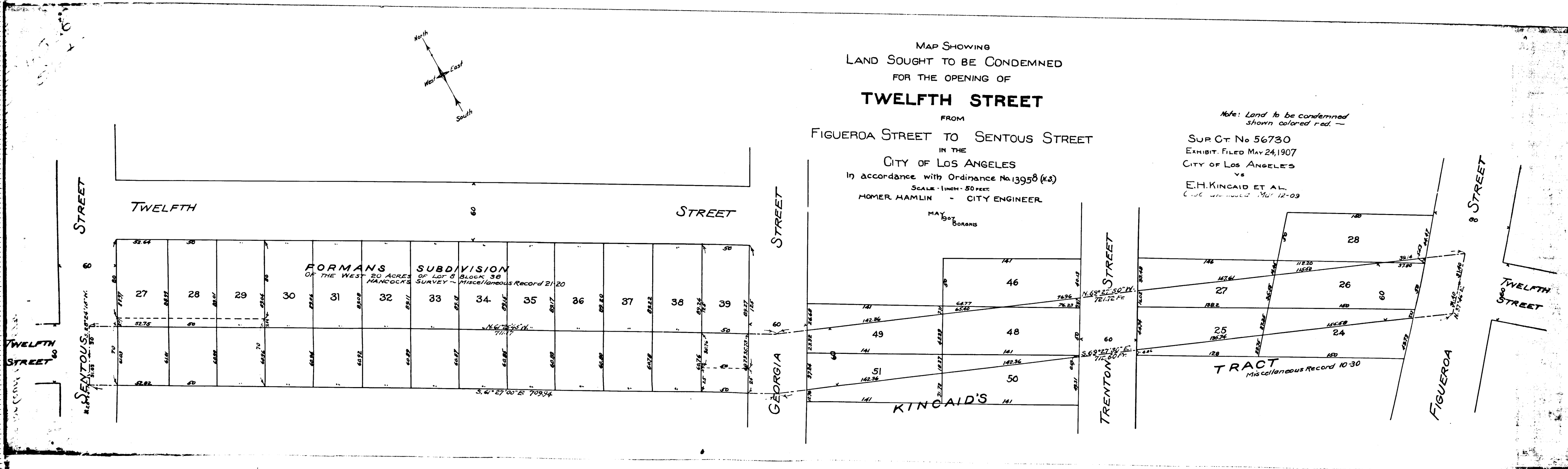


MAP SHOWING
LAND SOUGHT TO BE CONDEMNED
FOR THE OPENING OF
TWELFTH STREET

FROM
FIGUEROA STREET TO SENTOUS STREET
IN THE
CITY OF LOS ANGELES
In accordance with Ordinance No. 13958 (K.S.)
SCALE - 1 INCH = 50 FEET
HOMER HAMLIN - CITY ENGINEER

Note: Land to be condemned
shown colored red. —
SUP. CT. No 56730
EXHIBIT FILED MAY 24, 1907
CITY OF LOS ANGELES
vs
E.H. KINCAID ET AL.
CASE UNDEVELOPED MAY 12-09



C.F. 505 -

957
101
5014
957

101
957
101
957