

MAP and DIAGRAM

showing the land to be taken ^{and condemned for the opening and} widening of Main street in the city of Alhambra, California. from the Easterly line of First street to the Easterly line of Gardenia street produced Northerly under Ordinance No 94.

Hereon figures in black ink next to property lines show each the length of said lines in feet, other figures in black ink show the numbers of the lots

Solid black lines show original lot lines. Blue lines show land to be taken for the widening of said street

The diagram is drawn to a scale of 50 feet to one inch

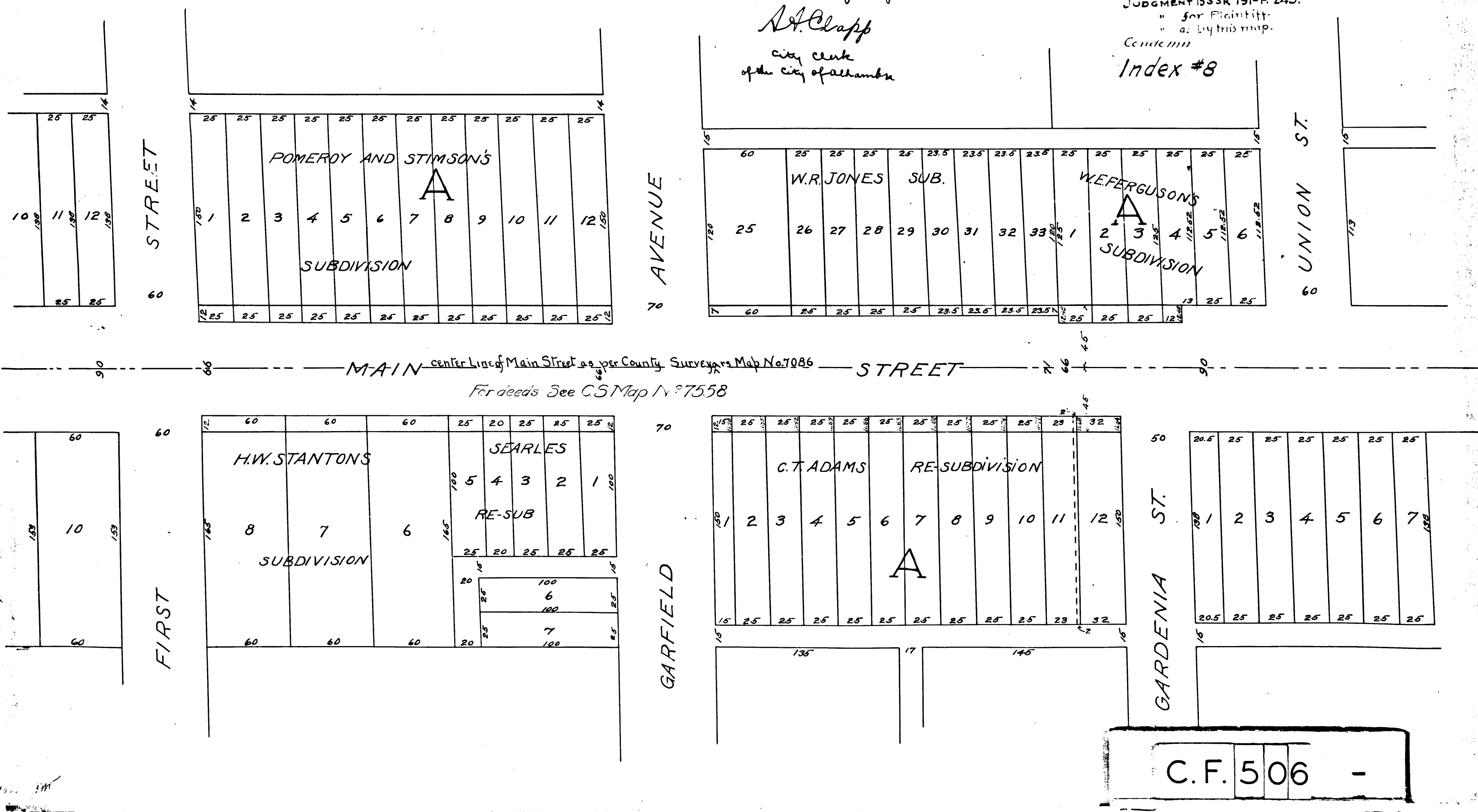
Sheet 7
Alhambra

I hereby certify that this Map was confirmed and adopted by the Board of Trustees of the City of Alhambra on the 8th day of January 1907

A. Clapp
City Clerk
of the City of Alhambra

FILED JUL. 2-1907
SUP. CT. No 55734
CITY OF ALHAMBRA
vs
GEORGE W. STIMSON ET AL.
FINAL JUDG. AUG. 2-1909.
JUDGMENT BOOK 191-P 245.
for Plaintiff
as by this map.

Condemned
Index #8



C.F. 506 -