



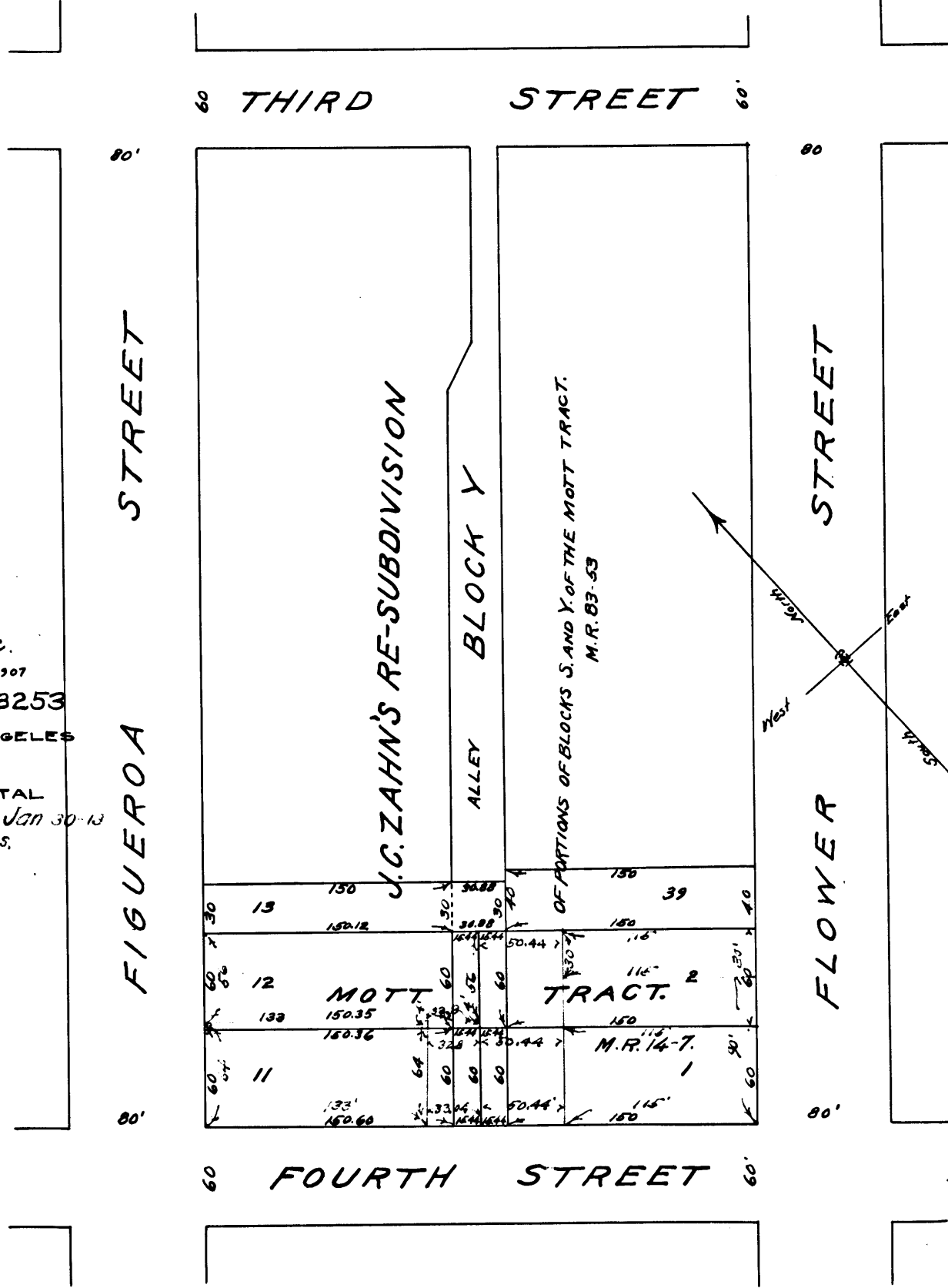
*Map*  
 Showing land sought to be condemned for the opening of an  
**Alley**  
 between  
 Figueroa Street and Flower Street, and between Third Street and Fourth Street,  
 in the  
 City of Los Angeles, Cal.  
 Under Ordinance No. (New Series)  
 Homer Hamlin, City Engineer.

Scale: 1 inch = 80 feet. March, 1907.

Note:- Portion colored Red indicates land to be condemned.

EXHIBIT C.  
 FILED SEPT. 5, 1907  
 SUP. CT. No. 58253  
 CITY OF LOS ANGELES  
 vs.  
 H. HIGGINS ET AL  
 Case dismissed Jan. 30, 1907  
 Ord. 17260 NS.

C.F. 517



Map Approved 1907.  
 City Engineer.

