

MAP
 Showing
Land sought to be Condemned for the Opening of
NEW ENGLAND STREET,
 between
Seventeenth Street and Washington Street
 in the
City of Los Angeles, Cal.

In accordance with Ordinance N° 14710 (New Series.)

Scale 1 inch to 100 feet

Note: Land to be Condemned Colored Red

Homer Hamlin
 City Engineer

August 1907

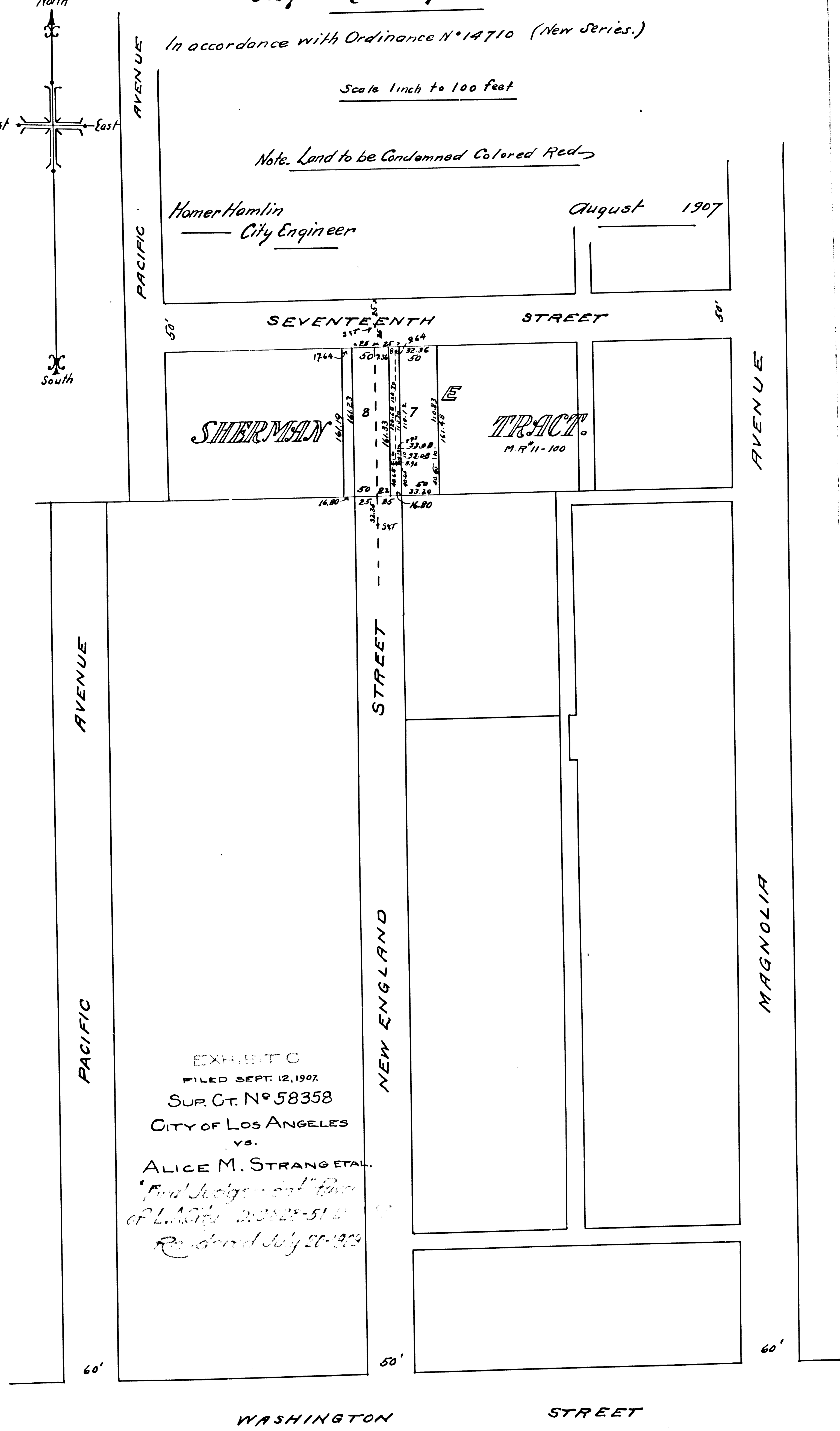
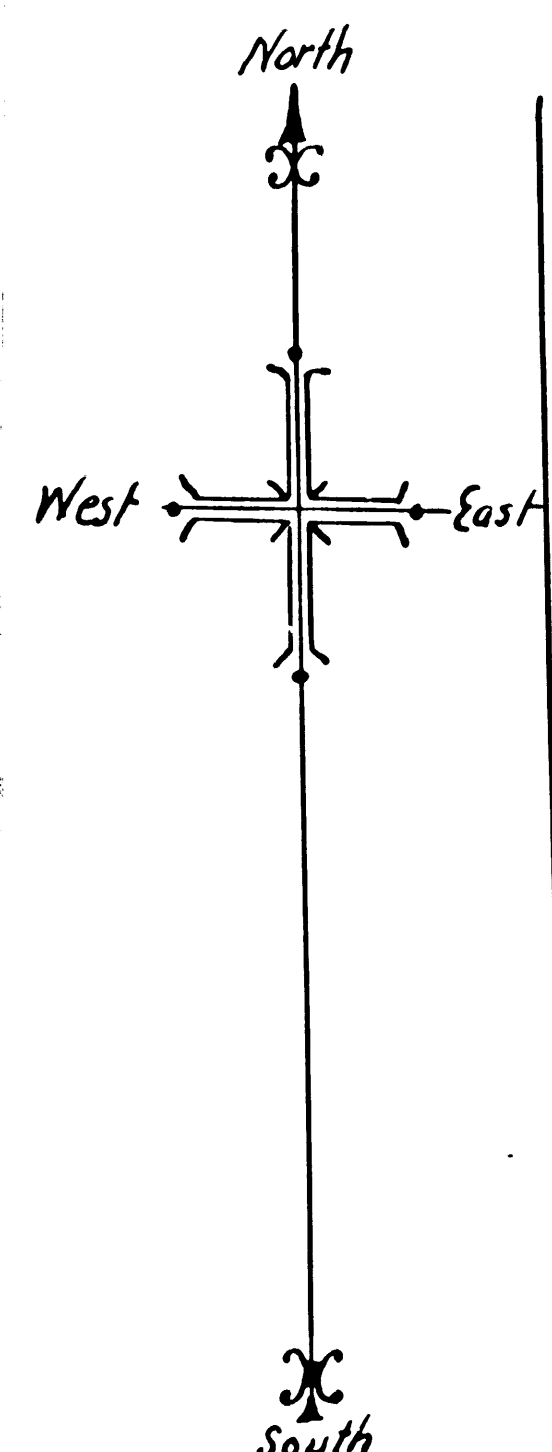


EXHIBIT C
 FILED SEPT. 12, 1907.
 SUP. CT. N° 58358
 CITY OF LOS ANGELES
 vs.
 ALICE M. STRANG ET AL.
 Trial Judge's Court Room
 of L.A. City 20002-51
 Rendered July 25, 1907

C.F. 520

